

Electronic Buzzers Installation 109 / Accessories

Surface housing 4-fold GY



Part No.: 975.109.05

MECHANICAL DATA

Length	366 mm
Width	150 mm
Height	55 mm
Materials	PC
Housing colour	Grey
Protection category	IP65
Weight with packaging	767 g
Product weight	767 g

APPROVAL DATA

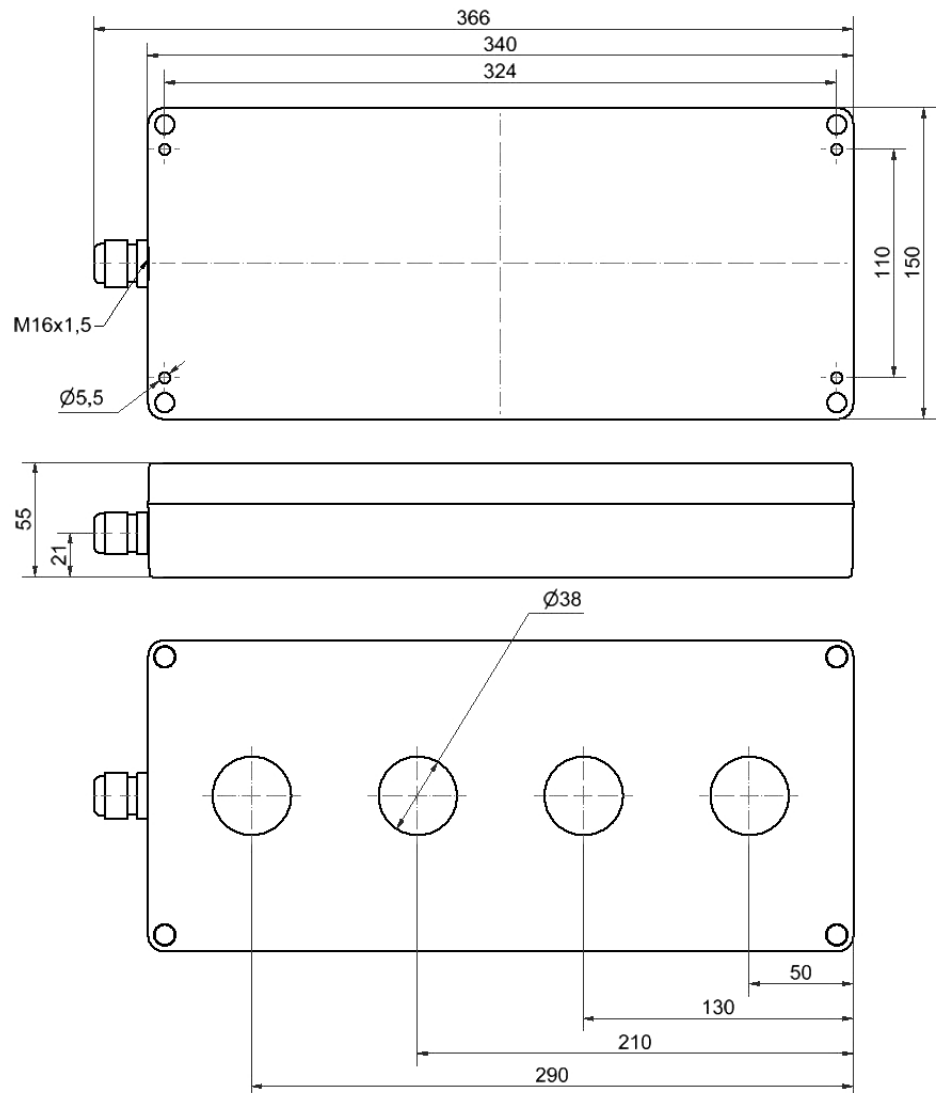
Conforms with RoHS directive	Fulfills substance restriction
WEEE	No
Conforms with ATEX-directive	No
Conforms with CCC	No
Conforms with UL	No
Conforms with FCC	No
Conforms with IC	No
EAC certificate available	No
Conforms with UKCA (Importer)	No
Conforms with CMIM	No
Conforms with AS-I	No
ICAO Certification	No
Conforms with DNV	No
Conforms with RoHS CN	No

! For additional installation and mounting information, refer to the appropriate user guide at www.werma.com. This printed copy is for information only and is subject to alteration.

Electronic Buzzers Installation 109 / Accessories

Surface housing 4-fold GY

DRAWING



For additional installation and mounting information, refer to the appropriate user guide at www.werma.com. This printed copy is for information only and is subject to alteration.