

CorePro LED PLT 4P



CorePro LED PLT HF 15W 830 4P GX24q-3

The CorePro LED PLT 4P integrates a LED light source into a traditional fluorescent form factor. This product is the ideal solution for uplampping in general lighting applications: it meets basic lighting requirements, offers significant energy savings, and is environmentally friendly

Product data

| General Information | | Lamp Current (Max) | |
|--|--------------------|--|---------|
| Cap-Base | GX24q-3 | | 400 mA |
| Nominal lifetime | 30,000 hour(s) | Lamp Current (Min) | 250 mA |
| Switching Cycle | 200,000 | Starting Time (Nom) | 0.5 s |
| Lighting Technology | LED | Warm-up time to 60% light | 0.5 s |
| Flux measurement reference | Sphere | Power Factor (Fraction) | 0.9 |
| | | Voltage (Nom) | 20-60 V |
| | | Ballast Compatibility | HF |
| | | LED alternative to fluorescent lamp power | 32 W |
| Light Technical | | Inrush current at mains | - |
| Color Code | 830 [CCT of 3000K] | Max. lamp no. on MCB B type 10A - Mains | - |
| Beam Angle (Nom) | 120 degree(s) | Max. lamp no. on MCB B type 10A – EM ballast without Compensation Capacitor. | - |
| Luminous Flux | 1,620 lm | Max. lamp no. on MCB B type 10A – EM ballast with Compensation Capacitor. | - |
| Color Designation | White (WH) | Max. lamp no. on MCB B type 16A - Mains | - |
| Correlated Color Temperature (Nom) | 3000 K | Max. lamp no. on MCB B type 16A – EM ballast without Compensation Capacitor. | - |
| Luminous Efficacy (rated) (Nom) | 108 lm/W | Max. lamp no. on MCB B type 16A – EM ballast with Compensation Capacitor. | - |
| Color Consistency | <6 | | |
| Color rendering index (CRI) | 82 | Temperature | |
| LLMF At End Of Nominal Lifetime (Nom) | 70 % | T-Case Maximum (Nom) | 70 °C |
| Photobiological safety according to EN 62471 | RG1 | | |
| Operating and Electrical | | | |
| Line Frequency | 20K-80K Hz | | |
| Input Frequency | 20K-80K Hz | | |
| Power Consumption | 15 W | | |

CorePro LED PLT 4P

Controls and Dimming

| | |
|----------|----|
| Dimmable | No |
|----------|----|

Mechanical and Housing

| | |
|--------------------|----------|
| Bulb Finish | Frosted |
| Bulb Material | Plastic |
| Product Length | 141 mm |
| Bulb Shape | PL-T |
| Net Weight (Piece) | 0.129 kg |

Approval and Application

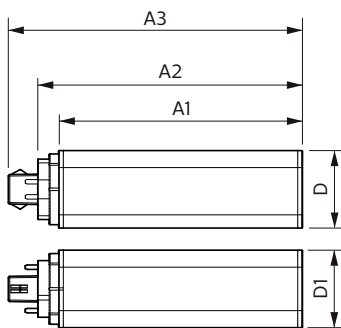
| | |
|-------------------------------|---------------------------------------|
| Energy Efficiency Class | F |
| Energy Saving Product | Yes |
| Approval Marks | RoHS compliance KEMA Keur certificate |
| Energy Consumption kWh/1000 h | 15 kWh |
| EPREL Registration Number | 1361424 |
| CE mark | Yes |

| | |
|---------------------------|-----------------|
| EU RoHS compliant | Yes |
| Ambient temperature range | -20 °C to 35 °C |

Product Data

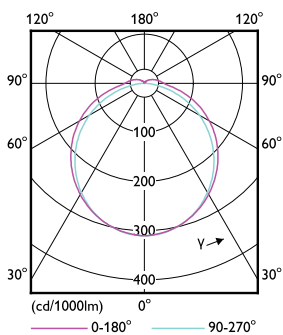
| | |
|---------------------------------|---------------------------------------|
| Order product name | CorePro LED PLT HF 15W 830 4P GX24q-3 |
| Full product name | CorePro LED PLT HF 15W 830 4P GX24q-3 |
| Full product code | 871951448784000 |
| Order code | 929003576702 |
| Material Nr. (12NC) | 929003576702 |
| Numerator - Quantity Per Pack | 1 |
| EAN/UPC - Product/Case | 8719514487840 |
| Numerator - Packs per outer box | 20 |
| EAN/UPC - Case | 8719514487857 |

Dimensional drawing

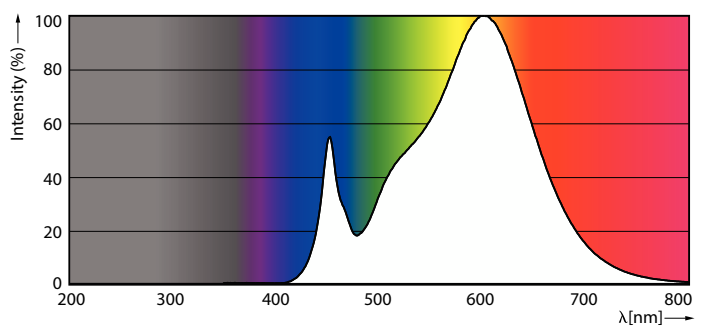


| Product | D1 | D2 | A1 | A2 | A3 |
|---------------------------------------|-------|-------|--------|--------|--------|
| CorePro LED PLT HF 15W 830 4P GX24q-3 | 42 mm | 42 mm | 129 mm | 141 mm | 156 mm |

Photometric data



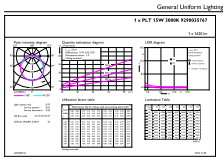
Light Distribution Diagram - CorePro LED PLT HF 15W 830 4P GX24q-3



Spectral Power Distribution Colour - CorePro LED PLT HF 15W 830 4P GX24q-3

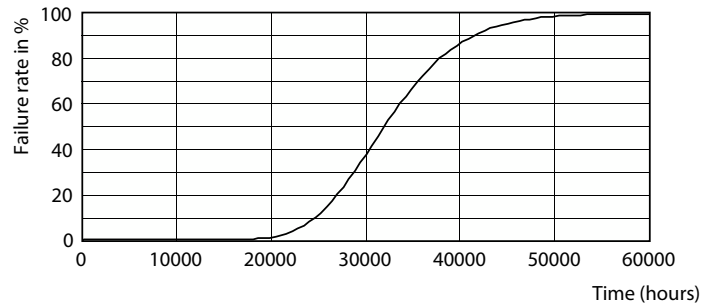
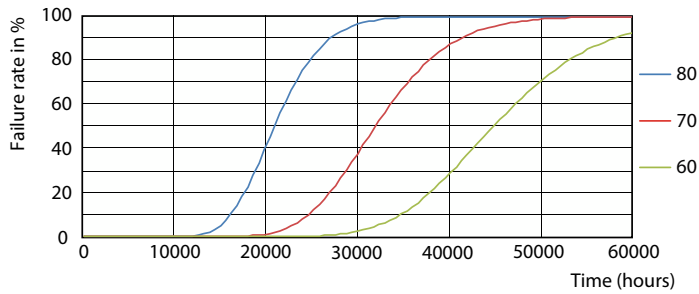
CorePro LED PLT 4P

Photometric data

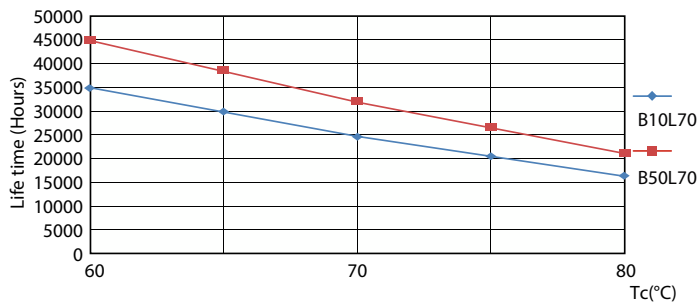


General uniform lighting - CorePro LED PLT HF 15W 830 4P GX24q-3

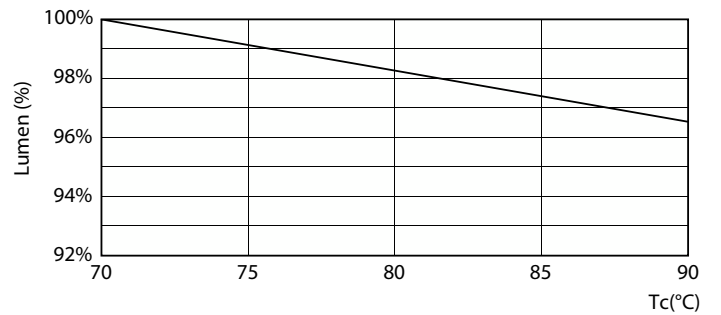
Lifetime



FailureRate



Life Expectancy Diagram

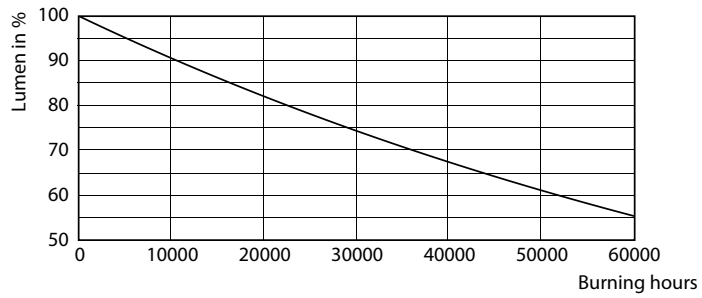


LifetimeVsTc

Lumen Maintenance Diagram - CorePro LED PLT HF 15W 830 4P GX24q-3

CorePro LED PLT 4P

Lifetime



Lumen Maintenance Diagram - CorePro LED PLT HF 15W 830 4P GX24q-3

