

# SmartDriver Kit EBO Fire Graphics

Instruction Sheet  
R10238GB0



# 1 SmartDriver Kit Esmi Fire EN54 introduction

Visualize, operate and drive efficiency with our SmartDriver Kit Esmi Fire EN54 (FFS00706002). The SmartDriver works as a driver between the Esmi Fire Alarm panels and EcoStruxure Building Operation (EBO) automation server that enable EBO graphical user interface for the fire system. The EBO fire graphics functions are available in a web browser and mobile environments. With the fire graphics all fire elements are placed according to the floor plan and the status of an element is visualized. User may operate the fire elements like detectors or fire panels by just selecting them from the floor plan.

The SmartDriver Kit is pre-assembled inside the Esmi Sense wall mount cabinet. The SmartDriver Kit includes transformer, power unit and automation server. There are different levels of access rights concerning elements and actions.

**Note!** Fire panel needs to be able to offer Info protocol line RS485 to SmartDriver Kit and an optional board is necessary to fire panel which is connected.  
 - Info line option board (FFS00702523)

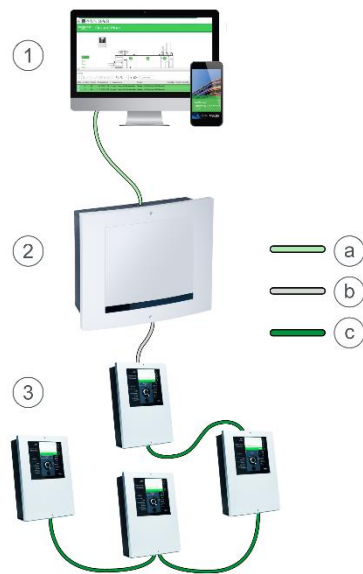


Figure: Architecture

- |                    |                    |
|--------------------|--------------------|
| 1. User interface  | a. Ethernet        |
| 2. SmartDriver Kit | b. INFO line RS485 |
| 3. Fire System     | c. FXcom RS485     |

## 2 EBO Fire Graphics features

SmartDriver combined with EcoStruxure Building Operation (EBO) will offer an integrated view of the whole facility.

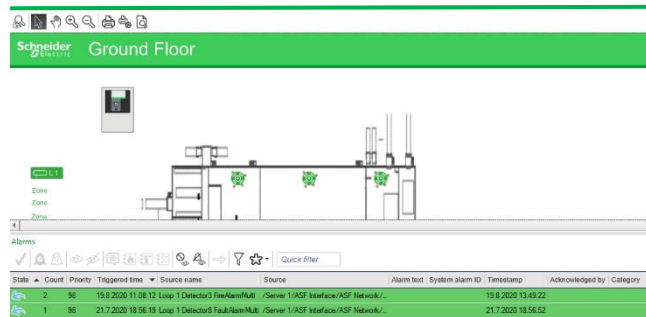


Figure: Fire elements on top of the floorplan

### 2.1 Fire system element types and information

- Fire panel, fire zone, detectors, manual call points, inputs, outputs
- name (= address, e.g. "04.025")
- customer text from fire system configuration
- address point type description
- panel type and fire zone
- current status description
- latest measurement value and its interpretation
- a fire zone element knows the address points that belong to it (Access all addresses from zone element)

### 2.2 Status presentation

- fire alarms
- delayed fire alarms
- fault warnings with fault type info
- maintenance warnings with maintenance type info
- icon appearance reflects status
- status text reflects status
- events from address points, fire zones and fire system appear on the event list
- alarms on alarm list (alarm type, non-silenced/silenced/delayed etc.)  
Priority (1. alarms, 2 pre-alarms, 3. faults and maintenance warnings)

## 2.3 Alarm functions

- show location of alarm immediately
- indicate active alarms on the site plans with animation
- site plan alarm picture printout (manual), configurable alarm transmission

## 2.4 Control features

- address point disablement
- address point disablement with timer
- address point enablement
- alarm silence and reset
- additional delay start and quick reset for delayed alarms
- query a new measurement value for a detector in real time

## 2.5 Contamination monitoring

- view measurement value history as a detailed per fire zone

# 3 Installation and Configuration

SmartDriver Kit Esmi Fire EN54 Wall mount cabinet is designed for easy installation. Mains for transformer is 230VAC. Default IP address for Automation Server (AS) is 192.168.1.99 MASK 255.255.255.0

For direct connection to AS USB (A male) cable with Mini USB (male) is needed.

AS fire configuration is done by using **AS EN54 Fire Configurator** windows application without the need for manual bindings.

More detailed cable connections and necessary software required for installation can be found at Installation and Commissioning manuals.