



CorePro LED tube Universal T8



CorePro LEDtube UN 1200mm UO 15.5W865 T8

The new Philips CorePro LEDtube Universal T8 brings simplicity to your lighting project. You don't need to pay attention to the driver technology anymore. Thanks to a unique design, Philips CorePro LEDtube Universal T8 directly fits in luminaires operating either on Electro Magnetic ballasts or HF Electronic ballasts or mains power connection. So simple to operate and no need to carry double stock of products! Perfectly safe, reliable & easy to install Philips CorePro LEDtube Universal T8 is the ideal alternative to standard fluorescent tubes to save energy and lower investment.

Product data

General Information		Photobiological safety according to EN 62471	
Cap-Base	G13 [Medium Bi-Pin Fluorescent]	RG0	
Nominal lifetime	50,000 hour(s)	Operating and Electrical	
Switching Cycle	50,000	Line Frequency	50 to 60 Hz
Lighting Technology	LED	Input Frequency	50 to 60 Hz
Flux measurement reference	Sphere	Power Consumption	15.5 W
Light Technical		Lamp Current (Max)	75 mA
Color Code	865 [CCT of 6500K]	Lamp Current (Min)	75 mA
Beam Angle (Nom)	240 degree(s)	Lamp Current (Nom)	75 mA
Luminous Flux	2,400 lm	Starting Time (Nom)	0.5 s
Color Designation	Cool Daylight	Warm-up time to 60% light	0.5 s
Correlated Color Temperature (Nom)	6500 K	Power Factor (Fraction)	0.9
Luminous Efficacy (rated) (Nom)	154 lm/W	Voltage (Nom)	220-240 V
Color Consistency	<6	Ballast Compatibility	Universal
Color rendering index (CRI)	80	LED alternative to fluorescent lamp power	36 W
LLMF At End Of Nominal Lifetime (Nom)	70 %	Inrush current at mains	8.6
		Max. lamp no. on MCB B type 10A - Mains	89

CorePro LED tube Universal T8

Max. lamp no. on MCB B type 10A – EM ballast without Compensation Capacitor.	105
Max. lamp no. on MCB B type 10A – EM ballast with Compensation Capacitor.	19
Max. lamp no. on MCB B type 16A – Mains	143
Max. lamp no. on MCB B type 16A – EM ballast without Compensation Capacitor.	168
Max. lamp no. on MCB B type 16A – EM ballast with Compensation Capacitor.	30

Temperature

T-Case Maximum (Nom)	50 °C
----------------------	-------

Controls and Dimming

Dimmable	No
----------	----

Mechanical and Housing

Bulb Finish	Frosted
Bulb Material	Glass
Product Length	1,200 mm
Bulb Shape	T8
Net Weight (Piece)	0.202 kg

Approval and Application

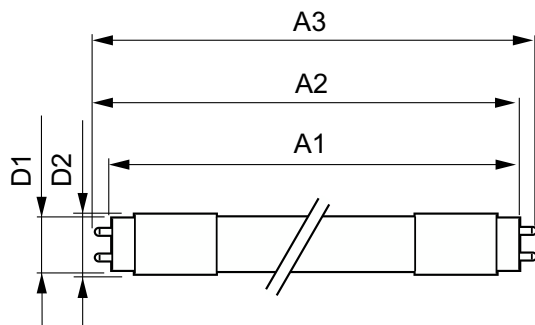
Energy Efficiency Class	D
-------------------------	---

Energy Saving Product	Yes
Approval Marks	RoHS compliance
Energy Consumption kWh/1000 h	16 kWh
EPREL Registration Number	1552695
CE mark	Yes
EU RoHS compliant	Yes
Flickering value (PstLM) – Flickering value as per EN 61000-3-3	1
Stroboscopic effect visibility measure (SVM)	0.4
Ambient temperature range	-20 to +45 °C

Product Data

Order product name	CorePro LEDtube UN 1200mm UO 15.5W865 T8
Full product name	CorePro LEDtube UN 1200mm UO 15.5W865 T8
Full product code	872016920000500
Order code	929003648302
Material Nr. (12NC)	929003648302
Numerator - Quantity Per Pack	1
EAN/UPC - Product/Case	8720169200005
Numerator - Packs per outer box	20
EAN/UPC - Case	8720169200012

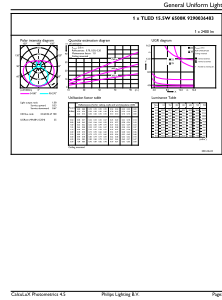
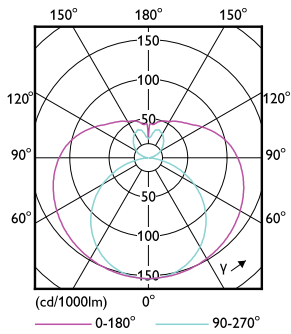
Dimensional drawing



Product	D1	D2	A1	A2	A3
CorePro LEDtube UN 1200mm UO 15.5W865 T8	26 mm	28 mm	1,199 mm	1,205 mm	1,213 mm

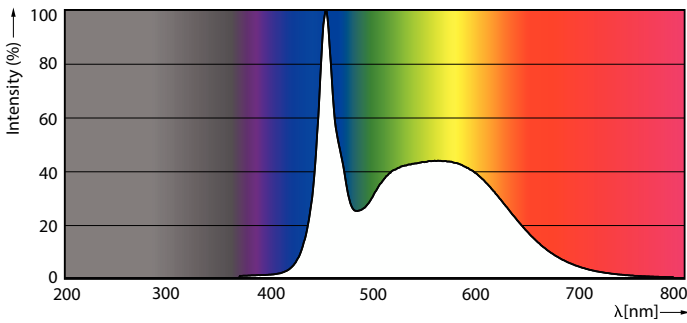
CorePro LED tube Universal T8

Photometric data



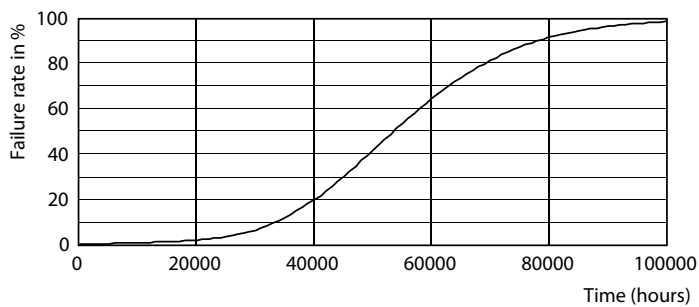
Light Distribution Diagram - CorePro LEDtube UN 1200mm UO 15.5W865 T8

General uniform lighting - CorePro LEDtube UN 1200mm UO 15.5W865 T8

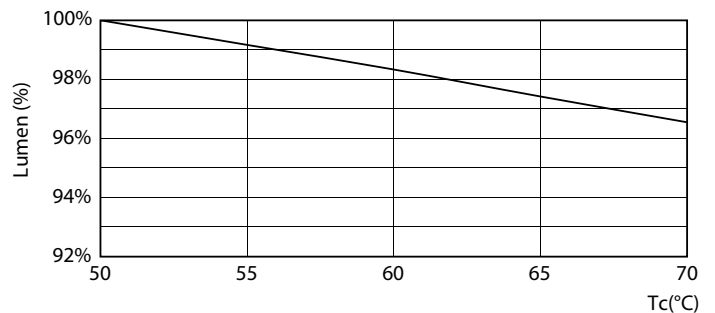


Spectral Power Distribution Colour - CorePro LEDtube UN 1200mm UO 15.5W865 T8

Lifetime



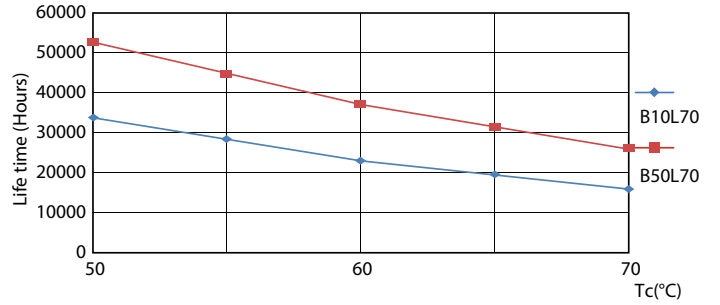
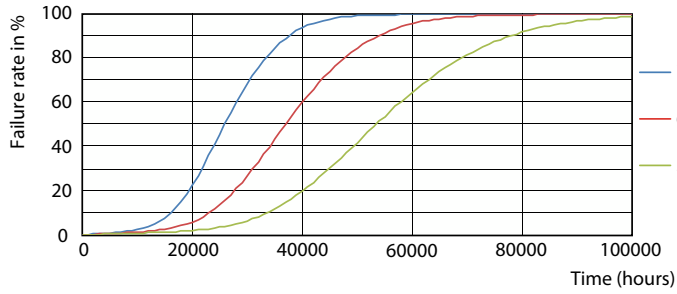
Life Expectancy Diagram



Lumen Maintenance Diagram - CorePro LEDtube UN 1200mm UO 15.5W865 T8

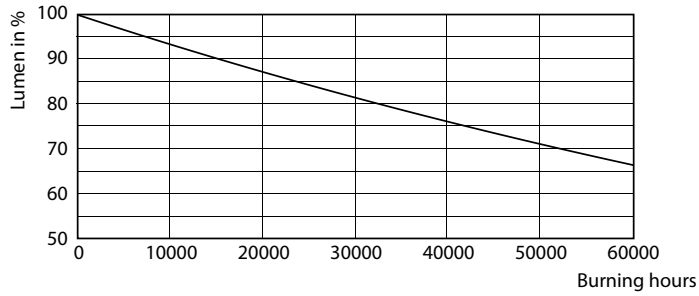
CorePro LED tube Universal T8

Lifetime



FailureRate

LifetimeVsTc



Lumen Maintenance Diagram - CorePro LEDtube UN 1200mm UO 15.5W865 T8

