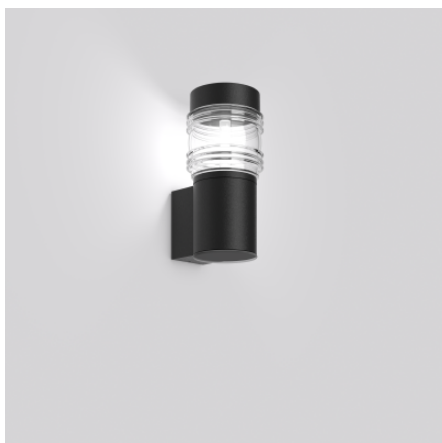


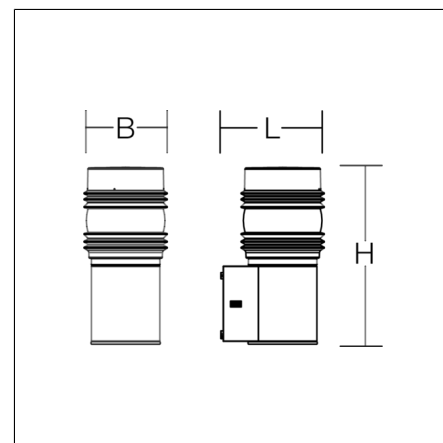
MEGA GÜRTELLINSE

621110.0031.1.19 | Wall luminaires



Wall luminaires
4051859942917
L 160, B 115, H 338

Wall (surface)
anthracite metallic (DB703)



Attractive wall luminaire with innovative housing design and high-quality LED optics. Housing made of corrosion-resistant die-cast aluminium, seawater resistant powder-coated. With membrane valve as a standard to avoid condensed water. Mouth-blown luminaire glass, clear, drum lens shape. Fixing on the wall outside the sealed volume, drill hole deviations can be compensated. Screwless luminaire fixing via RZB Gravalock® System. Connection box on base, max. 2 x 3 x 2.5 mm² for through wiring. With integrated HF movement sensor and light sensor. Functional parameters of the motion detector (wall mounting up to 2.5 m): HF detector 5.8 GHz with integrated corridor function. Detection angle 30°-150°. Radial detection range up to 6 m, depending on installation height. Hold time, daylight threshold and sensitivity adjustable via app. Sensors can be networked via Bluetooth®.

Product specifications

| | |
|--|----------------------------|
| Length L | 160 mm |
| Width B | 115 mm |
| Height H | 338 mm |
| Weight | 3.1 kg |
| Light source | LED |
| Colour temperature | 4000 K |
| Rated luminous flux | 520 lm |
| System power | 10 W |
| System efficiency | 52 lm/W |
| Glare evaluation UGR (4H 8H) | 19,2 |
| Beam angle | down 180° up 180° |
| Rated life | 60000 h (L80/B50) |
| Colour rendering index (CRI) | 80 |
| Colour tolerance | 3 |
| Photobiological safety according to EN 62471 | Risk group 1 |
| Driver | Converter |
| Control | Sensor |
| Voltage | 220 - 240 V / 50 Hz, 60 Hz |
| Luminaires on B10A fuse | 39 |
| Luminaires on B16A fuse | 63 |
| Luminaires on C10A fuse | 63 |
| Luminaires on C16A fuse | 100 |
| Inrush current / Inrush current duration | 8 A / 5 µs |
| CIE Flux Code / CEN Flux Code | 14 38 62 46 100 |
| Type of protection | IP 65 |
| Protection class | I |
| Filament test | 960 °C |
| Impact resistance | IK04 |
| Ambient temperature | -20 °C ... + 40 °C |
| Conformity mark | CE, EAC |

MEGA GÜRTELLINSE

621110.0031.1.19 | Wall luminaires



Spareparts



982553.0031
Luminaire head, anthracite