



# WDR-120/240/480 series INSTALLATION AND OPERATION

## Mounting Instructions

Mounting : Mount as shown in figure only, with input terminals down.

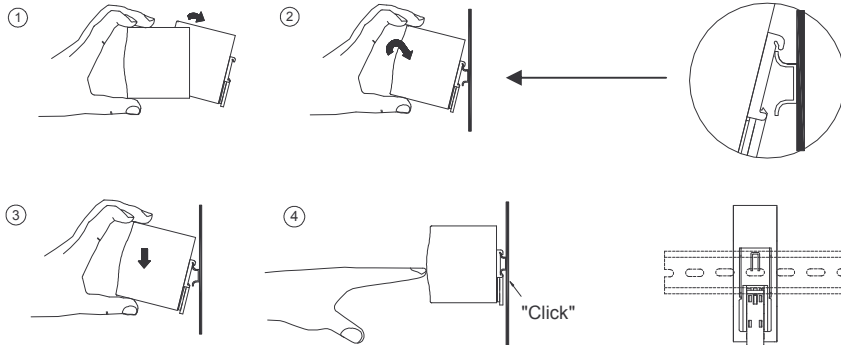
( or else sufficient cooling will not be possible. )

Admissible DIN-rail: TS35/7.5 or TS35/15

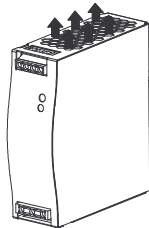
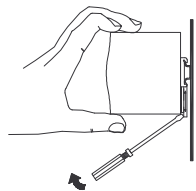
For rail fastening:



- (1) Tilt the unit slightly rearwards.
- (2) Fit the unit over top hat rail.
- (3) Slide it downward until it hits the stop.
- (4) Press against the bottom for locking.
- (5) Shake the unit slightly to check the locking action.



## Removal



**HOT!**  
Do not touch side and rear walls in operation!

- Convective cooling
- Do not cover upper and lower wall surface!
  - Leave sufficient space around the unit for cooling

Screws at the housing are for internal grounding. Do not remove them!

**Not Allowed**



## Notes On Safety

### Read instructions:

Before working with the power supply : read these instructions carefully and completely. Make sure that you have understood all the information! Comply with notes on the unit!

### Disconnect system from supply voltage:

Before any installation, maintenance or modification work : Disconnect your system from supply voltage. Make sure that it can't be re-connected inadvertently.

**CAUTION : For continued protection against risk of fire, replace only with same type and rating of fuse.**

**ATTENTION: Pour ne pas compromettre la protection contre les risques d'incendie, remplacer par un fusible de même type et de memes caractéristiques nominales.**

### Before start of operation, ensure appropriate installation:

Warning! Improper installation/operation may impair safety and result in operating trouble, even destruction of the unit.

The unit must be installed and put into service by appropriately qualified operators only. Before operation is started the following conditions must be ensured in particular:

- ⊙ With flexible cables: all strands must be fastened in the terminal blocks.
- ⊙ The unit must be sufficiently fused.
- ⊙ All output lines must be rated for the power supply output current and must be connected with the correct polarity.
- ⊙ Use minimum 80°C wire.
- ⊙ Terminal torque I/P 4.4Lb-In, O/P 7Lb-In.
- ⊙ Use copper wire only.
- ⊙ Connector cables 0.5mm<sup>2</sup>~5mm<sup>2</sup>.
- ⊙ If the power supply unit installed Joyin 14S102K, 14N102K or Thinking TVR14102-D as Surge Protective Device (ZNR1, ZNR2), can not use at SPD type 2 application.
- ⊙ Maximum surrounding air temperature : 12V : 45°C ; 24V, 48V : 55°C.
- ⊙ Use in any 2-phase of 3-phase-4-wire Wye-connecting system.



### In operation: No modifications!

As long as the unit is in operation: Do not modify the installation! The same applies also to the secondary side. Risk of electric arcs and electric shock (danger to life)! The unit becomes hot. Do not touch the unit in operation and shortly after disconnection!

## External Input Circuit Breaker

If an external circuit breaker is utilized, a minimum value is required to avoid undesired tripping of the circuit breaker.

		C-characteristic	D-characteristic
Ampere Rating	Min.	10A	5A
	Max.	20A	20A