

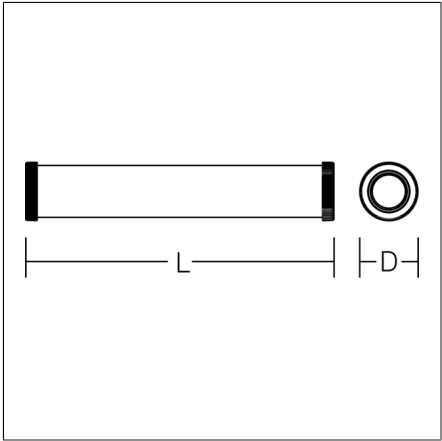
PLANOX TUBE

601070.002.1.76 | Surface-mounted damp-proof luminaires



Tube luminaires  
4051859759102  
D 78, L 722

Ceiling mounting, pendant, Wall (surface)  
white



Robust protective tube luminaire for tough requirements. Rack made of sheet steel, white powder coated. End caps made of plastic (polyamide) grey. Diffuser made of plastic (polycarbonate), opal, shockproof. Symmetrical light distribution. Homogeneous light distribution. With accessories for wall, ceiling or pendant mounting. Driver integrated. Easy installation with the Plug & Play Wieland RST® CLASSIC plug-in system. Luminaire with integrated through-wiring for series connection of further luminaires by two Wieland RST® Classic plug connectors (plug and socket). Accessories for electrical connection must be ordered separately. Mounting set must be ordered separately. Luminaires with limited surface temperature in accordance with EN 60598-2-24 for use in environments in which a deposit of conductive dust on the luminaire can be expected. Qualified for use in the food and drink industry. Suitable for lighting in public car parks and public off-street parking spaces according to DIN 67528. Environmentally friendly and resource-saving due to replaceable components.

Product specifications

Length L	722 mm
Diameter D	78 mm
Weight	1.53 kg
Light source	LED
Colour temperature	4000 K
Rated luminous flux	3500 lm
System power	31 W
System efficiency	113 lm/W
Glare evaluation UGR (4H 8H)	25,3
Beam angle	down 139°/106° up 180°/103°
Rated life	72000 h (L80/B50)
Colour rendering index (CRI)	83
Colour tolerance	3
Photobiological safety according to EN 62471	Risk group 1
Driver	Converter, dimmable
Control	DALI
Voltage	220 - 240 V / 0 Hz, 50 - 60 Hz
Luminaires on B10A fuse	21
Luminaires on B16A fuse	34
Luminaires on C10A fuse	35
Luminaires on C16A fuse	56
Inrush current / Inrush current duration	25 A / 177 µs
CIE Flux Code / CEN Flux Code	41 70 89 89 100
Type of protection	IP 67
Protection class	I
Filament test	750°C - 30 seconds
Impact resistance	IK08
Ambient temperature	-20 °C ... + 30 °C
Safety marks	D-mark
Conformity mark	CE, EAC

# PLANOX TUBE

601070.002.1.76 | Surface-mounted damp-proof luminaires



## Accessories



982117.009  
Retaining clips for wall or ceiling installation



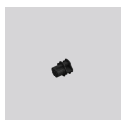
982118.000  
Mounting brackets with hanger assembly made of stainless steel (set 2 pieces)



982713.006  
Connector, 5 pole, with plug and socket



982714.006  
Socket for feed-in



982715.003  
End cap RST20i5