



# MASTER Value LEDtube Universal T8



## MAS LEDtube VLE UN 1500mm UO 23W830 T8

The new Philips MASTER Value LEDtube Universal T8 brings ease and simplicity to your lighting project. That's because you do not need to match the driver technology anymore: a unique design enables the Philips MASTER Value LEDtube Universal T8 to directly fit in luminaires operating on either electromagnetic ballasts or HF electronic ballasts or mains power connection. It is so simple to operate and you no longer need to stock two types of tubes! Perfectly safe, reliable & easy to install Philips MASTER Value LEDtube Universal T8 is the ideal alternative to standard fluorescent tubes to maximize value over lifetime with high energy saving and lower maintenance costs.

### Product data

General Information		LLMF At End Of Nominal Lifetime (Nom)	
Cap-Base	G13 [Medium Bi-Pin Fluorescent]		70 %
Nominal lifetime	60,000 hour(s)	Photobiological safety according to EN 62471	RG0
Switching Cycle	50,000		
Lighting Technology	LED	Operating and Electrical	
Flux measurement reference	Sphere	Line Frequency	50 to 60 Hz
		Input Frequency	50 to 60 Hz
		Power Consumption	23 W
		Lamp Current (Nom)	106 mA
		Starting Time (Nom)	0.5 s
		Warm-up time to 60% light	0.5 s
		Power Factor (Fraction)	0.9
		Voltage (Nom)	220-240 V
		Ballast Compatibility	Universal
Light Technical		LED alternative to fluorescent lamp power	58 W
Color Code	830 [CCT of 3000K]	Inrush current at mains	10
Beam Angle (Nom)	190 degree(s)	Max. lamp no. on MCB B type 10A - Mains	73
Luminous Flux	3,400 lm		
Color Designation	White (WH)		
Correlated Color Temperature (Nom)	3000 K		
Luminous Efficacy (rated) (Nom)	147 lm/W		
Color Consistency	<6		
Color rendering index (CRI)	80		

# MASTER Value LEDtube Universal T8

Max. lamp no. on MCB B type 10A – EM ballast without Compensation Capacitor.	73
Max. lamp no. on MCB B type 10A – EM ballast with Compensation Capacitor.	15
Max. lamp no. on MCB B type 16A – Mains	116
Max. lamp no. on MCB B type 16A – EM ballast without Compensation Capacitor.	116
Max. lamp no. on MCB B type 16A – EM ballast with Compensation Capacitor.	25

## Temperature

T-Case Maximum (Nom)	55 °C
----------------------	-------

## Controls and Dimming

Dimmable	No
----------	----

## Mechanical and Housing

Bulb Finish	Frosted
Bulb Material	Glass
Product Length	1,500 mm
Bulb Shape	T8
Net Weight (Piece)	0.290 kg

## Approval and Application

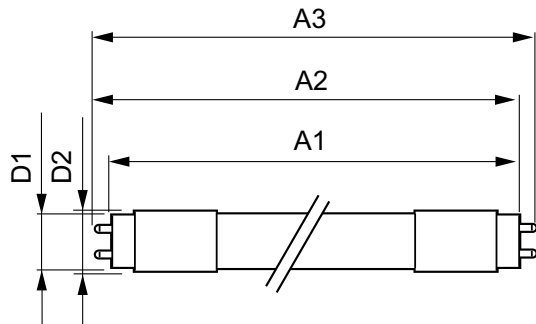
Energy Efficiency Class	D
-------------------------	---

Energy Saving Product	Yes
Approval Marks	RoHS compliance
Energy Consumption kWh/1000 h	23 kWh
EPREL Registration Number	1195916
CE mark	Yes
EU RoHS compliant	Yes
Flickering value (PstLM) – Flickering value as per EN 61000-3-3	1
Stroboscopic effect visibility measure (SVM)	0.4
Ambient temperature range	-20 to +45 °C

## Product Data

Order product name	MAS LEDtube VLE UN 1500mm UO 23W830 T8
Full product name	MAS LEDtube VLE UN 1500mm UO 23W830 T8
Full product code	871951431674400
Order code	929002997302
Material Nr. (12NC)	929002997302
Numerator - Quantity Per Pack	1
EAN/UPC - Product/Case	8719514316744
Numerator - Packs per outer box	10
EAN/UPC - Case	8719514316751

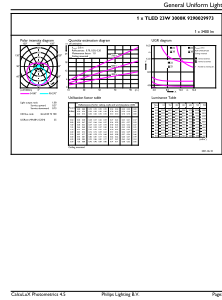
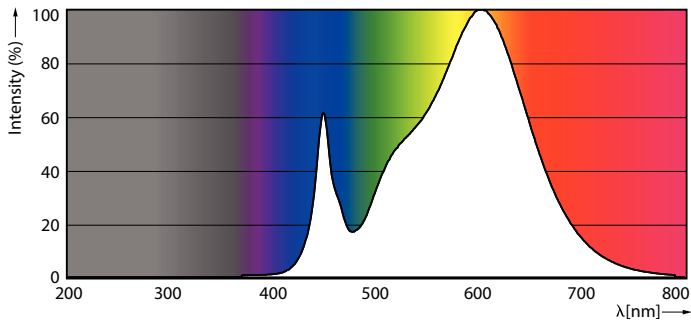
## Dimensional drawing



Product	D1	D2	A1	A2	A3
MAS LEDtube VLE UN 1500mm UO 23W830 T8	26 mm	28 mm	1,500 mm	1,506 mm	1,514 mm

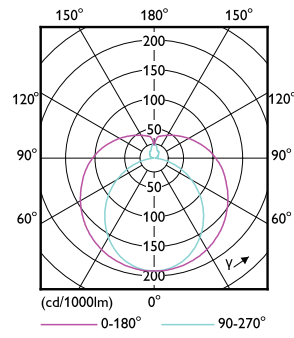
# MASTER Value LEDtube Universal T8

## Photometric data



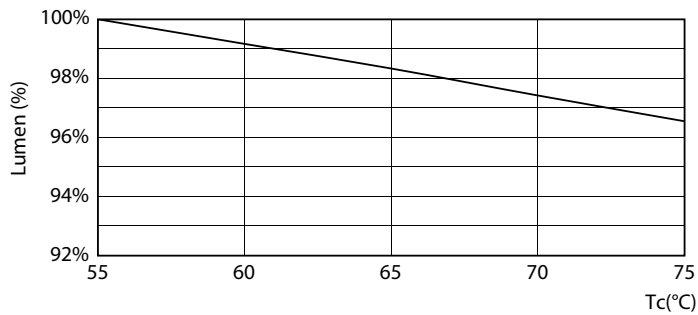
Spectral Power Distribution Colour - MAS LEDtube VLE UN 1500mm UO 23W830 T8

General uniform lighting - MAS LEDtube VLE UN 1500mm UO 23W830 T8

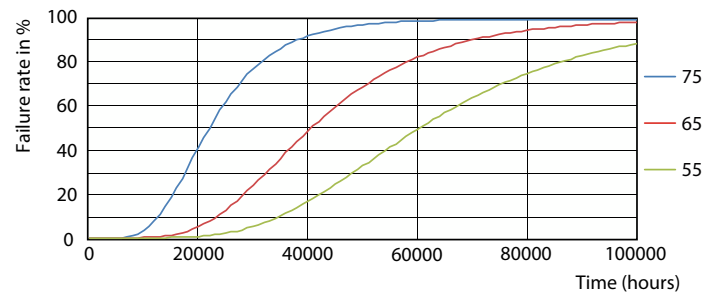


Light Distribution Diagram - MAS LEDtube VLE UN 1500mm UO 23W830 T8

## Lifetime



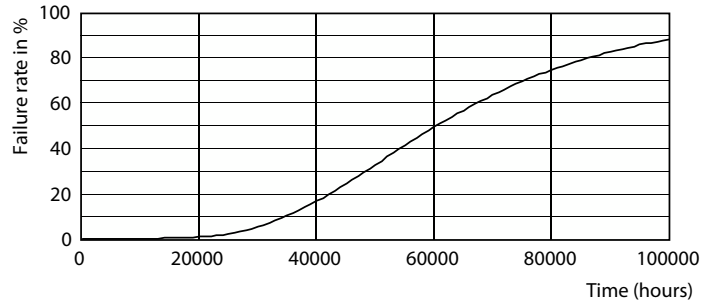
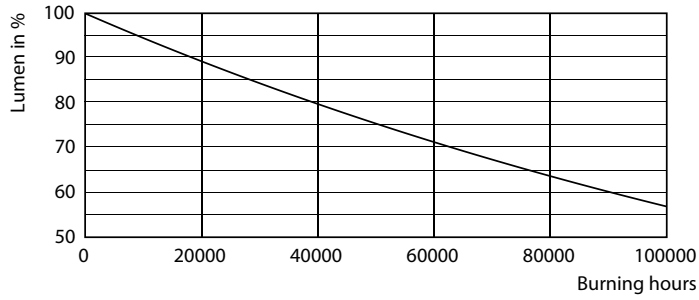
Lumen Maintenance Diagram - MAS LEDtube VLE UN 1500mm UO 23W830 T8



FailureRate

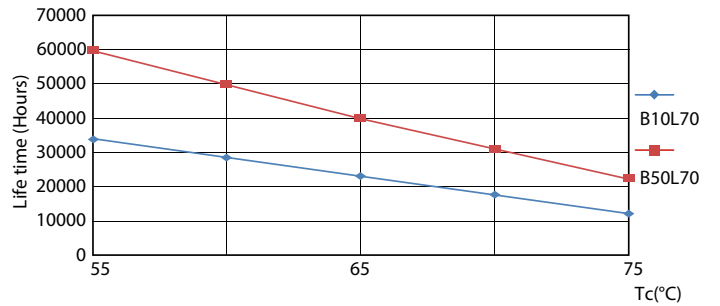
# MASTER Value LEDtube Universal T8

## Lifetime



Lumen Maintenance Diagram - MAS LEDtube VLE UN 1500mm UO 23W830 T8

Life Expectancy Diagram



LifetimeVsTc

