



# CorePro LED PLT 4P



## CorePro LED PLT HF 9W 830 4P GX24q-3

The CorePro LED PLT 4P integrates a LED light source into a traditional fluorescent form factor. This product is the ideal solution for uplampping in general lighting applications: it meets basic lighting requirements, offers significant energy savings, and is environmentally friendly

### Product data

General Information		Lamp Current (Max)	
Cap-Base	GX24q-3		400 mA
Nominal lifetime	30,000 hour(s)	Lamp Current (Min)	250 mA
Switching Cycle	200,000	Starting Time (Nom)	0.5 s
Lighting Technology	LED	Warm-up time to 60% light	0.5 s
Flux measurement reference	Sphere	Power Factor (Fraction)	0.9
		Voltage (Nom)	20-60 V
		Ballast Compatibility	HF
		LED alternative to fluorescent lamp power	26 W
Light Technical		Inrush current at mains	-
Color Code	830 [CCT of 3000K]	Max. lamp no. on MCB B type 10A - Mains	-
Beam Angle (Nom)	120 degree(s)	Max. lamp no. on MCB B type 10A – EM ballast without Compensation Capacitor.	-
Luminous Flux	990 lm	Max. lamp no. on MCB B type 10A – EM ballast with Compensation Capacitor.	-
Color Designation	White (WH)	Max. lamp no. on MCB B type 16A - Mains	-
Correlated Color Temperature (Nom)	3000 K	Max. lamp no. on MCB B type 16A – EM ballast without Compensation Capacitor.	-
Luminous Efficacy (rated) (Nom)	110 lm/W	Max. lamp no. on MCB B type 16A – EM ballast with Compensation Capacitor.	-
Color Consistency	<6		
Color rendering index (CRI)	82	Temperature	
LLMF At End Of Nominal Lifetime (Nom)	70 %	T-Case Maximum (Nom)	65 °C
Photobiological safety according to EN 62471	RG1		
Operating and Electrical			
Line Frequency	20K-80K Hz		
Input Frequency	20K-80K Hz		
Power Consumption	9 W		

# CorePro LED PLT 4P

## Controls and Dimming

Dimmable	No
----------	----

## Mechanical and Housing

Bulb Finish	Frosted
Bulb Material	Plastic
Product Length	127 mm
Bulb Shape	PL-T
Net Weight (Piece)	0.124 kg

## Approval and Application

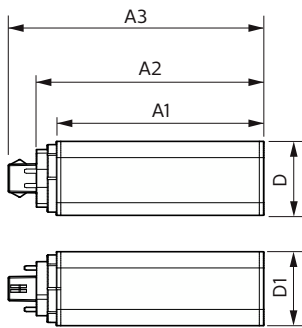
Energy Efficiency Class	F
Energy Saving Product	Yes
Approval Marks	RoHS compliance KEMA Keur certificate
Energy Consumption kWh/1000 h	9 kWh
EPREL Registration Number	1361422
CE mark	Yes

EU RoHS compliant	Yes
Ambient temperature range	-20 °C to 35 °C

## Product Data

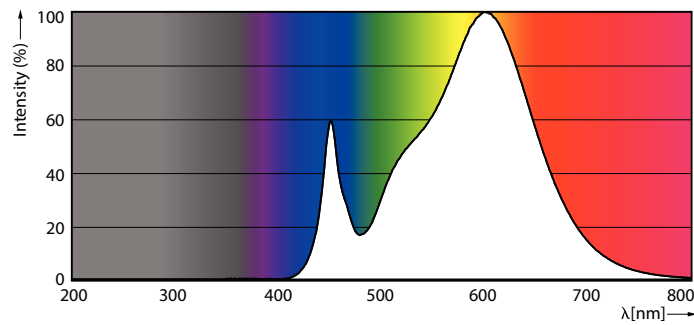
Order product name	CorePro LED PLT HF 9W 830 4P GX24q-3
Full product name	CorePro LED PLT HF 9W 830 4P GX24q-3
Full product code	871951448780200
Order code	929003576502
Material Nr. (12NC)	929003576502
Numerator - Quantity Per Pack	1
EAN/UPC - Product/Case	8719514487802
Numerator - Packs per outer box	20
EAN/UPC - Case	8719514487819

## Dimensional drawing

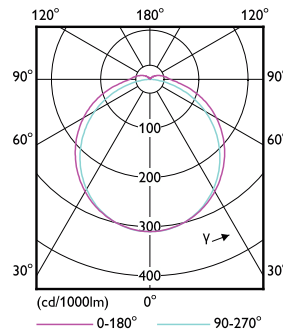


Product	D1	D2	A1	A2	A3
CorePro LED PLT HF 9W 830 4P GX24q-3	42 mm	42 mm	115 mm	127 mm	142 mm

## Photometric data



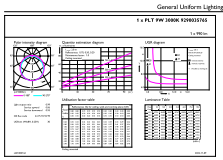
Spectral Power Distribution Colour - CorePro LED PLT HF 9W 830 4P GX24q-3



Light Distribution Diagram - CorePro LED PLT HF 9W 830 4P GX24q-3

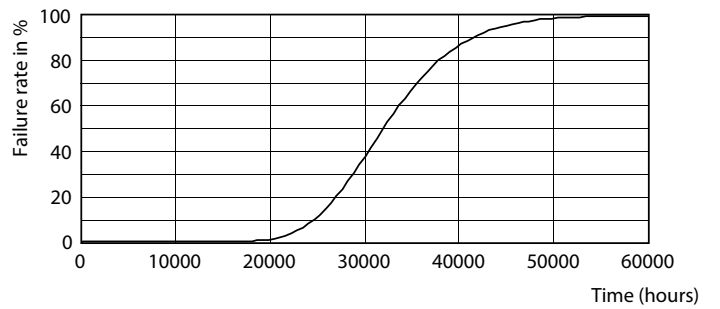
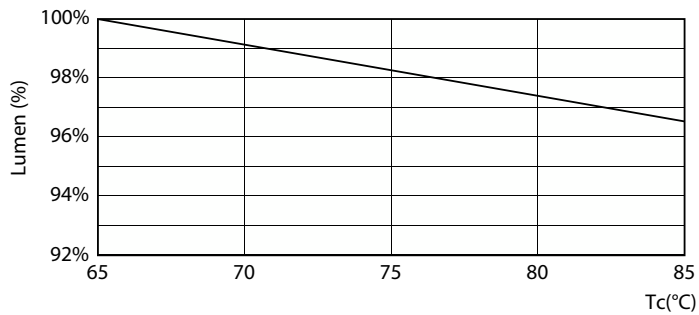
# CorePro LED PLT 4P

## Photometric data



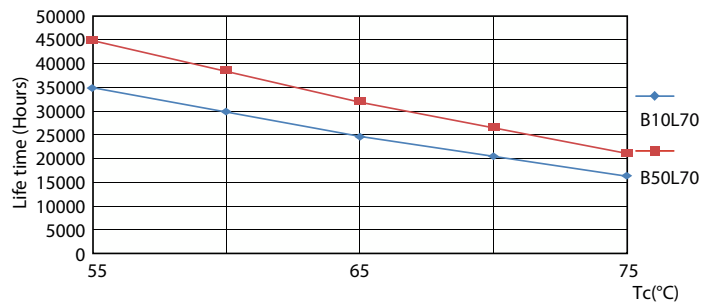
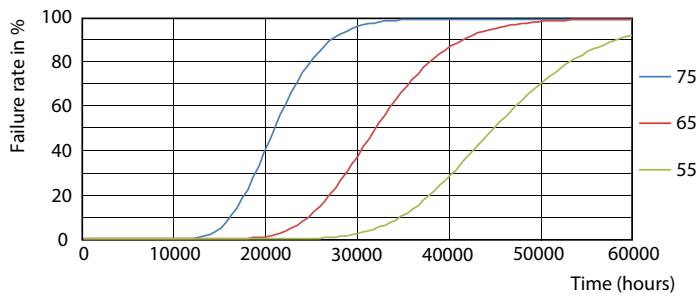
General uniform lighting - CorePro LED PLT HF 9W 830 4P GX24q-3

## Lifetime



Lumen Maintenance Diagram - CorePro LED PLT HF 9W 830 4P GX24q-3

Life Expectancy Diagram

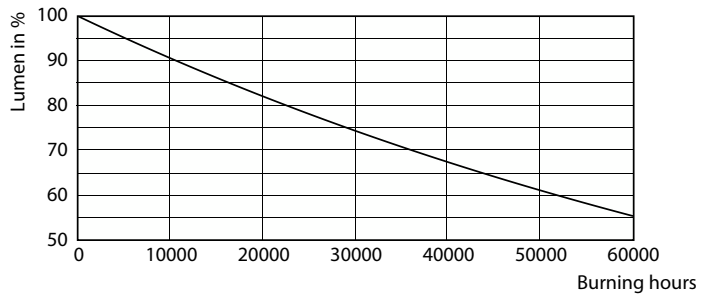


FailureRate

LifetimeVsTc

# CorePro LED PLT 4P

## Lifetime



Lumen Maintenance Diagram - CorePro LED PLT HF 9W 830 4P GX24q-3

