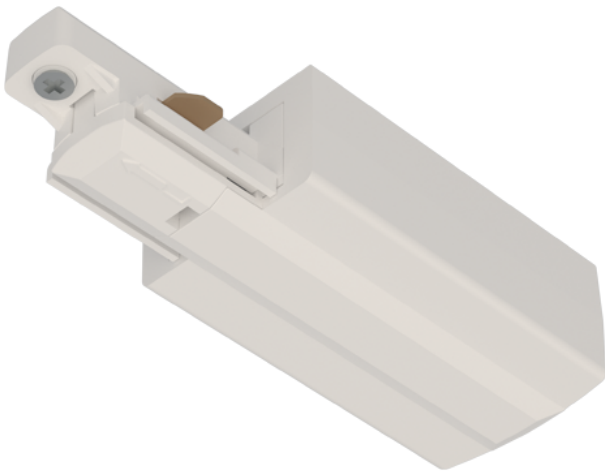




## **APRT/P1/LE/L/1/W**

Primo Single Circuit Live End Left White



Primo Single Circuit Track and Accessories

Option of left and right feed for Live end, L and T connectors

Technical Specifications:

Colour / Finish | [White]

Track Components | Accessories

IP Rating | IP20

Internal / External | Internal

Warranty (Years) | 5

CE Mark | Yes

UKCA Mark | Yes

Length | 95.73  
Width | 32.4  
Height | 22.17  
Input | 220/240V

## Technical Data - ETIM - Light-track (EC000101)

Nominal voltage	220-240 V
Width	32.4 mm
Length	95.73 mm
Height	22.17 mm
Built-in width	32.4 mm
Suitable for suspended mounting	Yes
Number of groups/phases	1
Suitable for bus connection	No
Material	Aluminium
Surface finishing	Matt
Colour	White
Surface-mounted	Yes
Built-in	No
Bendable	No
Built-in depth	22.17 mm
Protection class	I

Datasheet generated from <https://onetimepim.com> last updated Friday, February 16, 2024 4:45:32 PM