

# Control and signaling units Ø 8 and 12

Harmony<sup>®</sup> XVL LED pilot lights

Catalog

January 2015



# How can you fit a 6000-page catalog in your pocket ?

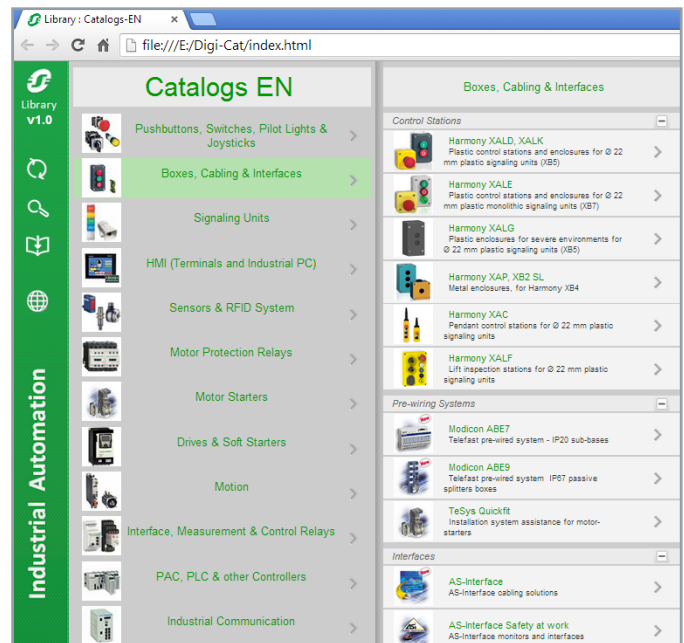
Schneider Electric provides you with the complete set of industrial automation catalogs all on a handy USB key for PC or in an application for tablets



## Digi-Cat, a handy USB key for PC



- > Convenient to carry
- > Always up-to-date
- > Environmentally friendly
- > Easy-to-share format



Contact your local representative to get your own Digi-Cat



## e-Library, the app for tablets

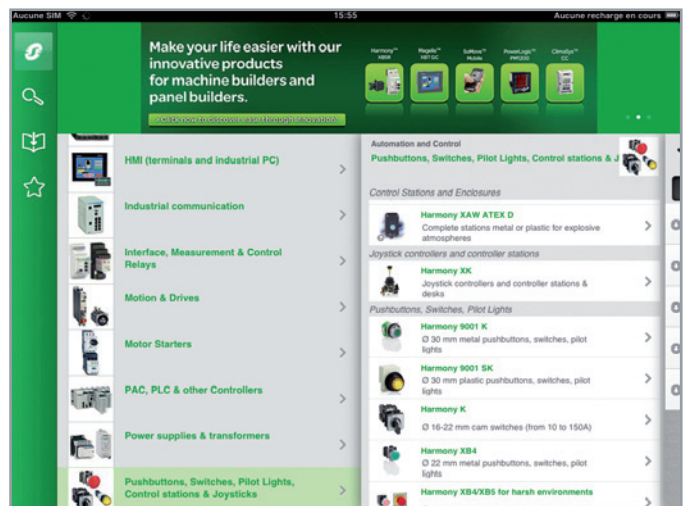
If you have an iPad®:

- > Go to the App Store and search for e-Library
- > or scan the QR code



If you have an Android tablet:

- > Go to the Google Play Store™ and search for eLibrary
- > or scan the QR code



# General contents

## Harmony® XVL LED pilot lights

**Selection guide** ..... page 2

### ■ Presentation






□ LED pilot lights, type XVLA ..... page 4

■ References ..... page 5

■ Product reference index ..... page 6

Type of products	Pilot lights	Pushbuttons, selector switches and pilot lights			Biometric switches
					
<b>Description of range</b>	<ul style="list-style-type: none"> <li>LED pilot lights</li> </ul>	<ul style="list-style-type: none"> <li>Pushbuttons</li> <li>Multiple-headed pushbuttons</li> <li>Emergency Stop pushbuttons</li> <li>Selector switches and key switches</li> <li>Illuminated pushbuttons</li> <li>Pilot lights</li> </ul>			<ul style="list-style-type: none"> <li>Fingerprint readers 24V ~</li> <li>Stand-alone biometric switches</li> <li>Stand-alone USB biometric switches</li> <li>USB biometric switches dedicated to Schneider HMI (1)</li> </ul>
<b>Features</b>	<b>Products</b>	Monolithic, compact, low consumption			Monolithic
	<b>Bezel</b>	Double insulated	Double insulated (3)	Metal, chromium plated or black	Double insulated, dark grey
	<b>Shape of head</b>	Circular	Circular, square or rectangular	Circular	Circular or square
<b>Drilling or cut-out for fixing</b>	Ø 8 mm and Ø 12 mm/0.315 in. and 0.472 in.	Ø 16 mm/0.630 in.	Ø 22 mm/0.866 in.		
<b>Degree of protection</b>	Conforming to IEC 60529	IP 40 IP 65 with seal	IP 65	IP 66 IP 69K (Selector switches and key switches, multiple-headed pushbuttons and Emergency Stop pushbuttons with bellows)	IP 65 (control button)
	Conforming to UL 508 and CSA C22-2 N° 14	–	Enclosure type 4, 4X and 13		
<b>Cabling</b>	Tags for 2.8 x 0.5 mm/0.110 x 0.020 in. connectors or threaded connector	Faston connectors Solder pins for printed circuit boards (3) Fast connector socket (4)	Spring clamp terminal connections Screw clamp terminal connections Faston connectors Connector With adaptor for printed circuit board		
<b>Mounting</b>	Panel thickness	1...8 mm/0.039...0.315 in.	1...6 mm/0.039...0.236 in.		
<b>Type references</b>	<b>XVLA</b>	<b>XB6, XB6E</b>	<b>XB4</b>	<b>XB5</b>	<b>XB5S</b>

(1) Compatible with Magelis iPC, STU, OT, GXO, GT (except GT1000 series), GK, GH, and GTO models.  
 (2) Wireless and batteryless pushbutton and receiver ready-paired at the factory.

Wireless and batteryless pushbuttons	Pushbuttons, selector switches and pilot lights	Joystick controllers	Pushbuttons, selector switches and pilot lights	Cam switches
				
<ul style="list-style-type: none"> <li>Wireless and batteryless pushbuttons and rope pull switch</li> <li>Configurable receivers</li> <li>Access point</li> <li>Relay-antenna</li> <li>Mobile handy box or plastic boxes for wall mounting</li> </ul>	<ul style="list-style-type: none"> <li>Pushbuttons</li> <li>Emergency Stop and Emergency switching off pushbuttons</li> <li>Selector switches and key switches</li> <li>Illuminated pushbuttons</li> <li>Pilot lights</li> </ul>	<ul style="list-style-type: none"> <li>2 or 4 direction</li> <li>Stay put or spring return</li> </ul>	<ul style="list-style-type: none"> <li>Pushbuttons</li> <li>Emergency Stop buttons</li> <li>Selector switches and key switches</li> <li>Illuminated pushbuttons</li> <li>Pilot lights</li> </ul>	<ul style="list-style-type: none"> <li>Switches</li> <li>Stepping switches</li> <li>Reversing and changeover switches</li> <li>Ammeter switches</li> <li>Voltmeter switches</li> <li>Reversing switches</li> <li>Star-delta and reversing star-delta switches</li> <li>Pole change switches</li> </ul>
Ready-to-use packs (2) and "components" range	Monolithic	Complete units or sub-assemblies (body + head with lever)		Complete units or sub-assemblies (body + front panel + head)
Metal, chromium plated or double insulated, black	Double insulated, dark grey (or white for pilot lights)	Metal, chromium plated	Double insulated, black	Metal, chromium plated or double insulated, black
Transmitter with circular head	Circular	Circular	Hexagonal	Square
Ø 22 mm/0.866 in.			Ø 30 mm/1.181 in.	Ø 16 or Ø 22 mm/0.630 or 0.866 in.: series K10 Ø 22 mm/0.866 in. and multifixing: series K1/K2 4 holes, 48 or 68 centres: series K30...K150
IP 65	IP 65 (control buttons and pilot lights) IP 54 (Emergency switching off pushbuttons)	IP 65	IP 66	IP 65
Enclosure type 12	Enclosure type 3 (pushbuttons and Emergency stop) and 4 (pilot lights)	Enclosure type 4, 4X and 13		IP 66
Wireless (transmitter) Through cable (receiver)	Screw and captive clamp terminal connections Faston clip connections (pilot lights)	Screw and captive clamp terminal connections		
1...6 mm/0.039...0.236 in.				0.5...6 mm/0.020...0.236 in. (depending on model)
<b>XB5R, XB4R</b>	<b>XB7</b>	<b>XD4PA</b>	<b>XD2GA</b>	<b>XD5PA</b>
		<b>9001K, 9001SK</b>		<b>K10, K1, K2, K30, K50, K63, K115, K150</b>

(3) For Harmony XB6 only.  
 (4) For Harmony XB6E only.

# Control and signaling units

## Ø 8 and 12

### LED pilot lights

#### Presentation

This range of LED pilot lights meets the latest requirements in signaling techniques.

#### Applications

Due to their small size, Ø 8 and Ø 12 fixing pilot lights are particularly suitable for the following applications:

- Mounting on small control panels
- Shallow depth mounting
- Where a large number of signaling units are required on a control panel
- Low power dissipation

#### Advantages

LED pilot lights have many advantages:

- Very long life and low maintenance costs (bulb test procedure no longer required)
- Highly resistant to shocks, vibrations, and over voltage
- Low power consumption which, for example, allows direct compatibility with programmable controller outputs
- No sudden failures

#### Description and environment

■ The XVL A range features two different models:

- **XVLA1** ●● 8 mm/0.31 in. diameter pilot lights with black bezel. This version has a sealed front face (IP 40).
- **XVLA2** ●● 8 and 12 mm/0.31 and 0.47 in. diameter pilot lights with integral lens cap and covered LED. These models have sealed front faces (IP 40) and can be fitted with an additional seal to provide IP 65 protection.

■ All models comply with UL (Recognized) and CSA certifications.

#### Connection

■ Quick installation is assisted by:

- tag connectors suitable for soldered connections on Ø 8 mm/Ø 0.31 in. pilot lights
- threaded connectors on Ø 12 mm/Ø 0.47 in. pilot lights

■ This offers two advantages in terms of connection:

- An integral ballast resistor
- Reverse polarity protection

# Control and signaling units

## Ø 8 and 12

### LED pilot lights



XVLA1●●

#### References

##### Pilot lights with black bezel

Description	Supply voltage ---	Color	Reference	Weight kg/lb
<b>Ø 8 mm/Ø 0.31 in.</b> <b>Degree of protection:</b> <input type="checkbox"/> IP 40 (with integral ballast resistor and reverse polarity protection diode)	5 V	Green	<b>XVLA113</b>	0.003/0.007
		Red	<b>XVLA114</b>	0.003/0.007
		Yellow	<b>XVLA115</b>	0.003/0.007
	12 V	Green	<b>XVLA123</b>	0.003/0.007
		Red	<b>XVLA124</b>	0.003/0.007
		Yellow	<b>XVLA125</b>	0.003/0.007
	24 V	Green	<b>XVLA133</b>	0.003/0.007
		Red	<b>XVLA134</b>	0.003/0.007
		Yellow	<b>XVLA135</b>	0.003/0.007
	48 V	Green	<b>XVLA143</b>	0.003/0.007
		Red	<b>XVLA144</b>	0.003/0.007
		Yellow	<b>XVLA145</b>	0.003/0.007

IP 40 version



XVLA2●●

IP 65 version



XVLA2●● + XVLZ911 (1)

##### Pilot lights with integral lens cap, covered LED

Description	Supply voltage ---	Color	Reference	Weight kg/lb
<b>Ø 8 mm/Ø 0.31 in.</b> <b>Degree of protection:</b> <input type="checkbox"/> IP 40 <input type="checkbox"/> IP 65 with seal XVLZ911 (1) (with integral ballast resistor and reverse polarity protection diode)	5 V	Green	<b>XVLA213</b>	0.003/0.007
		Red	<b>XVLA214</b>	0.003/0.007
		Yellow	<b>XVLA215</b>	0.003/0.007
	12 V	Green	<b>XVLA223</b>	0.003/0.007
		Red	<b>XVLA224</b>	0.003/0.007
		Yellow	<b>XVLA225</b>	0.003/0.007
	24 V	Green	<b>XVLA233</b>	0.003/0.007
		Red	<b>XVLA234</b>	0.003/0.007
		Yellow	<b>XVLA235</b>	0.003/0.007
	48 V	Green	<b>XVLA243</b>	0.003/0.007
		Red	<b>XVLA244</b>	0.003/0.007
		Yellow	<b>XVLA245</b>	0.003/0.007
<b>Ø 12 mm/Ø 0.47 in.</b> <b>Degree of protection:</b> <input type="checkbox"/> IP 40 <input type="checkbox"/> IP 65 with seal XVLZ912 (1) (with integral ballast resistor and reverse polarity protection diode)	5 V	Green	<b>XVLA313</b>	0.007/0.015
		Red	<b>XVLA314</b>	0.007/0.015
		Yellow	<b>XVLA315</b>	0.007/0.015
	12 V	Green	<b>XVLA323</b>	0.007/0.015
		Red	<b>XVLA324</b>	0.007/0.015
		Yellow	<b>XVLA325</b>	0.007/0.015
	24 V	Green	<b>XVLA333</b>	0.007/0.015
		Red	<b>XVLA334</b>	0.007/0.015
		Yellow	<b>XVLA335</b>	0.007/0.015
	48 V	Green	<b>XVLA343</b>	0.007/0.015
		Red	<b>XVLA344</b>	0.007/0.015
		Yellow	<b>XVLA345</b>	0.007/0.015

IP 40 version

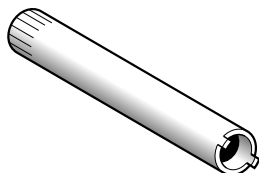


XVLA3●●

IP 65 version



XVLA3●● + XVLZ912 (1)



XVLX●●



XVLZ91●

##### Separate components

Description	For use with	Sold in lots of	Unit reference	Weight kg/lb
<b>Tightening tools</b> (sold singly)	Ø 8 mm/Ø 0.31 in. pilot lights	1	<b>XVLX08</b>	0.015/0.033
	Ø 12 mm/Ø 0.47 in. pilot lights	1	<b>XVLX12</b>	0.030/0.661
<b>Seals</b> (IP 65)	Ø 8 mm/Ø 0.31 in. pilot lights	10	<b>XVLZ911</b>	0.001/0.002
	Ø 12 mm/Ø 0.47 in. pilot lights	10	<b>XVLZ912</b>	0.001/0.002
<b>Other versions</b>	Ø 8 and Ø 12 mm/Ø 0.31 and Ø 0.47 in. LED pilot lights, without resistor, without reverse polarity protection diode (max. direct current: 30 mA ---) Please consult our Customer Care Centre.			

(1) To be ordered separately.

---

X	
XVLA113	5
XVLA114	5
XVLA115	5
XVLA123	5
XVLA124	5
XVLA125	5
XVLA133	5
XVLA134	5
XVLA135	5
XVLA143	5
XVLA144	5
XVLA145	5
XVLA213	5
XVLA214	5
XVLA215	5
XVLA223	5
XVLA224	5
XVLA225	5
XVLA233	5
XVLA234	5
XVLA235	5
XVLA243	5
XVLA244	5
XVLA245	5
XVLA313	5
XVLA314	5
XVLA315	5
XVLA323	5
XVLA324	5
XVLA325	5
XVLA333	5
XVLA334	5
XVLA335	5
XVLA343	5
XVLA344	5
XVLA345	5
XVLX08	5
XVLX12	5
XVLZ911	5
XVLZ912	5

Harmony Innovation



**Schneider Electric Industries SAS**

Head Office  
35, rue Joseph Monier  
F-92500 Rueil-Malmaison  
France

[www.schneider-electric.com/control](http://www.schneider-electric.com/control)

The information provided in this documentation contains general descriptions and/or technical characteristics of the performance of the products contained herein. This documentation is not intended as a substitute for and is not to be used for determining suitability or reliability of these products for specific user applications. It is the duty of any such user or integrator to perform the appropriate and complete risk analysis, evaluation and testing of the products with respect to the relevant specific application or use thereof. Neither Schneider Electric nor any of its affiliates or subsidiaries shall be responsible or liable for misuse of the information contained herein.

Design: Schneider Electric  
Photos: Schneider Electric

DIA5ED2130605EN