

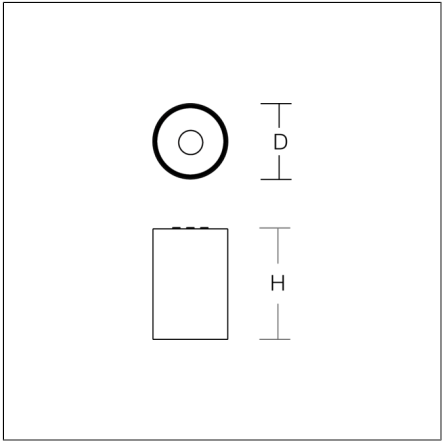
# HELEDON mini

931208.003.1.76 | Surface mounted downlights



Surface mounted downlights  
4051859840152  
D 87, H 197

Ceiling mounting  
deep black, matt (RAL 9005)



Cylindrical surface-mounted downlight. Housing: die-cast aluminium, powder-coated. Internal ceiling frame polycarbonate with bayonet mounting. Black plastic ring and recessed LED to prevent glare from the side. Optical assembly with reflector made of MIRO-Silver with 98% total light reflection for outstanding efficiency - can be changed without tools. Best colour rendering index Ra>90. Suitable for Ceiling mounting. Easy installation with a separate ceiling frame with bayonet mounting and plug connection. Driver integrated. Connected via plug-in connector. High quality converter without flickering and stroboscopic effect. The following accessories can be mounted without use of tools: interchangeable lenses, decorative glasses, honeycomb louvre, clear and frosted diffusers, white interchangeable plastic ring.

### Product specifications

Diameter D	87 mm
Height H	197 mm
Weight	0.93 kg
Light source	LED
Colour temperature	4000 K
Rated luminous flux	3800 lm
System power	29 W
System efficiency	131 lm/W
Glare evaluation UGR (4H 8H)	15,4
Beam angle	18°
Rated life	50000 h (L90/B10)
Colour rendering index (CRI)	92
Colour tolerance	2
Photobiological safety according to EN 62471	Risk group 1
Driver	Converter, dimmable
Control	DALI
Voltage	220 - 240 V / 50 - 60 Hz
Luminaires on B10A fuse	21
Luminaires on B16A fuse	34
Luminaires on C10A fuse	35
Luminaires on C16A fuse	57
Inrush current / Inrush current duration	18 A / 250 µs
CIE Flux Code / CEN Flux Code	100 100 100 100 100
Type of protection	IP 20
Protection class	I
Filament test	650°C - 30 seconds
Impact resistance	IK06
Ambient temperature	25 °C
Conformity mark	CE, EAC

# HELEDON mini

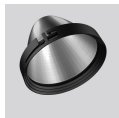
931208.003.1.76 | Surface mounted downlights



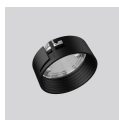
## Accessories



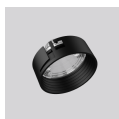
982368.003  
Reflector spot



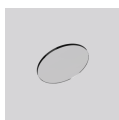
982368.023  
Reflector flood



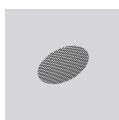
982369.013  
Medium lens



982369.033  
Wide flood lens



982370.000  
Diffuser, transparent



982371.003  
Anti-glare honeycomb louvre



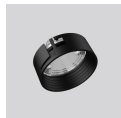
982421.002  
White plastic ring for lens.



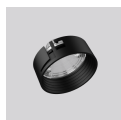
982647.002  
Decorative glass opal matt



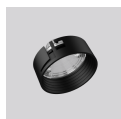
982368.013  
Reflector medium



982369.003  
Spot lens



982369.023  
Flood lens



982369.043  
Oval corridor lens



982370.010  
Diffuser, satinated



982419.002  
White plastic ring for reflector.



982368.033  
Reflector wide flood



982648.002  
Decorative glass opal matt