



# CoreLine Batten

## BN126C LED35S\_52S/830\_40 PSU L1500

CoreLine Batten, BATTEN, 37 W, 25 W, L1500, 3500 lm, 5200 lm, 3000 K, 4000 K, Opal, IP20/40

Whether for a new building or renovation of an existing space, customers want lighting solutions that provide quality of light and substantial energy and maintenance savings. The new CoreLine Batten range of LED products can be used to replace traditional battens with fluorescent lamps. The process of selecting, installing and maintaining is so easy – it’s a simple switch.

### Warnings and Safety

- The product is IPX0 & as such is not protected against water ingress & as such we strongly recommend that the environment in which the luminaire is to be installed is suitably checked
- If the above advice is not taken and the luminaires are subject to water ingress, Philips / Signify cannot guarantee safe failure & product warranty will become void

### Product data

General Information	
Number of gear units	1 unit
Driver included	Yes
Value ladder	Performance
Serviceability class	Class C, luminaire without serviceable parts, not serviceable
Warranty period	5 years
Sustainability rating	-

Light Technical	
Luminous Flux	3,500 5,200 lm
Correlated Color Temperature (Nom)	3000 4000 K

Luminous Efficacy (rated) (Nom)	140 lm/W
Color rendering index (CRI)	80
Light source color	830 warm white, 840 neutral white
Optic type	Symmetrical
Luminaire light beam spread	120°
All-in Type	All-in, Multi Color Temperature All-in, Multi Lumen

Operating and Electrical	
Input Voltage	220 to 240 V
Line Frequency	50 to 60 Hz
Inrush current	10.6 A

CoreLine Batten

Inrush time	0.527 ms
Power Consumption	37 25 W
Power Factor (Fraction)	0.9
Connection	Push-in connector 3-pole
Cable	-
Number of products on MCB of 16 A type B	13
Suitable for random switching	No
Protection class IEC	Safety class I
Feed-through wiring	Simple Connection and removable cover available for feed-through wiring 1-phase (internal wiring is not included)

Controls and Dimming

Dimmable	No
Driver/power unit/transformer	Power supply unit (On/Off)
Constant light output	No

Mechanical and Housing

Housing Material	Metal–Plastic
Reflector material	Polycarbonate
Optic material	Polycarbonate
Optical cover material	Polycarbonate
Fixation material	Steel
Housing Color	White
Optical cover finish	Opal
Overall length	1,450 mm
Overall width	65 mm
Overall height	65 mm
Dimensions (Height x Width x Depth)	65 x 65 x 1450 mm
Ingress protection code	IP20/40 [Finger-protected; Wire-protected]
Mech. impact protection code	IK04 [0.5 J standard plus]
Mounting	Ceiling Surface Suspended Wall-mounting bracket
Net Weight (Piece)	1.230 kg

Emergency Operation

Emergency flux	330 lm
----------------	--------

Approval and Application

Glow-wire test	Temperature 650 °C, duration 30 s
Flammability mark	For mounting on normally flammable surfaces
CE mark	Yes
ENEC mark	ENEC mark
EU RoHS compliant	Yes
Performance ambient temperature Tq	25 °C
Ambient temperature range	-20 to +40 °C

Initial Performance (IEC Compliant)

Luminous flux tolerance	-10%,+15%
Initial chromaticity	(0.43,0.40) SDCM≤3
Power consumption tolerance	+/-10%

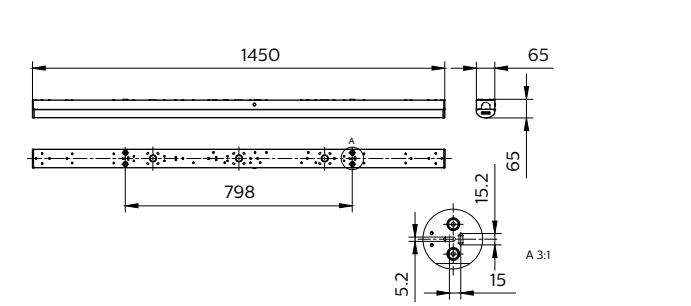
Over Time Performance (IEC Compliant)

Control gear failure rate at median useful life 50000 h	5 %
Control gear failure rate at median useful life 100000 h	30 %
Lumen maintenance (EN-IEC 62722-2-1) at median useful life* 50000 h	L80
Lumen maintenance (EN-IEC 62722-2-1) at median useful life* 100000 h	-

Product Data

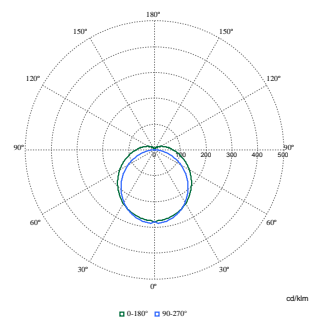
Order product name	BN126C LED35S_52S/830_40 PSU L1500
Full product name	BN126C LED35S_52S/830_40 PSU L1500
Full product code	872016976841399
Order code	76841399
Material Nr. (12NC)	911401850687
Numerator - Quantity Per Pack	1
EAN/UPC - Product/Case	8720169768413
Numerator - Packs per outer box	6
EAN/UPC - Case	8720169768499

Dimensional drawing



CoreLine Batten

Photometric data



Polar Normal (separate) - null - 911401850687

