



P-KUBE Lite safety handles



P-KUBE

P-KUBE Lite safety handles for FY and FG series switches

Description

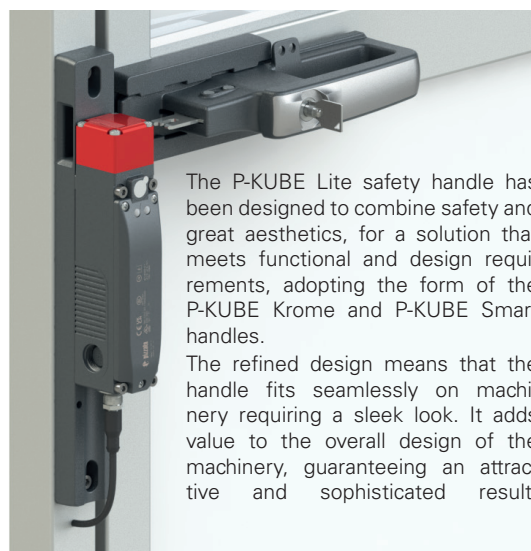


The P-KUBE Lite safety handle is compatible with Pizzato Elettrica FY and FG series safety switches, creating the perfect combination for a complete safety system. The intuitive

design and optimised ergonomics of the handle provide operators with a comfortable and secure grip. Sliding operation enables smooth and immediate use, minimising the amount of effort required to activate the safety switch. Equipped with a key lock, the handle enables installation of a "lock-out device" to increase the safety of the solution, reducing the risk of accidents or damage due to unauthorised access or accidental activation of the machine.

The handle and brackets are made of technopolymer and offer excellent resistance to impacts, wear and weathering, ensuring durability of the handle even in harsh environments.

Modern and ergonomic design

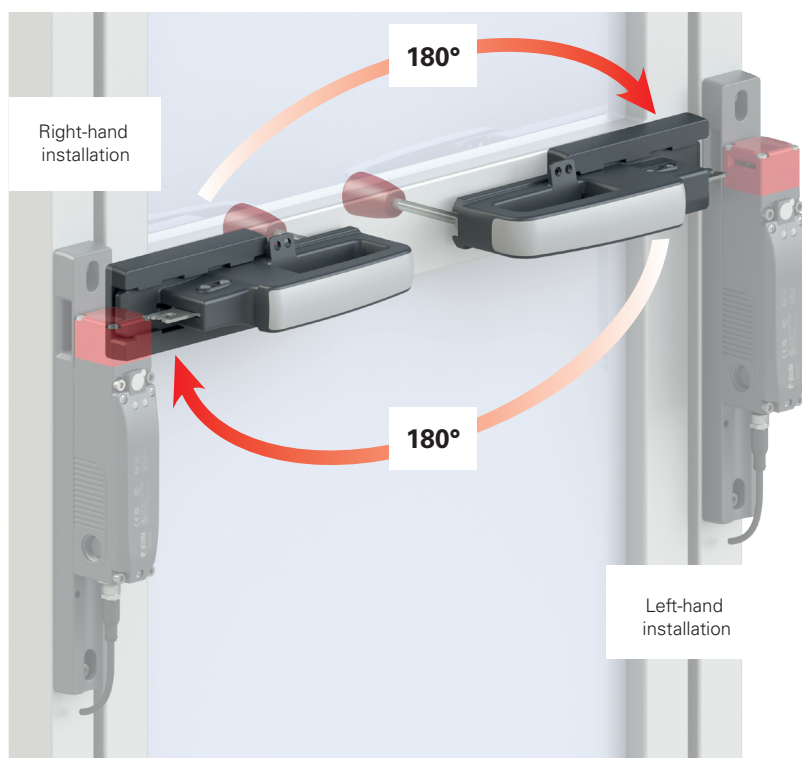


The P-KUBE Lite safety handle has been designed to combine safety and great aesthetics, for a solution that meets functional and design requirements, adopting the form of the P-KUBE Krome and P-KUBE Smart handles.

The refined design means that the handle fits seamlessly on machinery requiring a sleek look. It adds value to the overall design of the machinery, guaranteeing an attractive and sophisticated result.

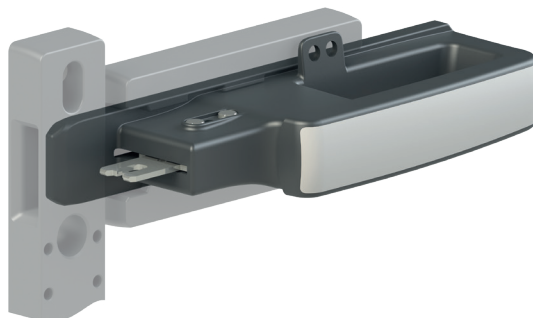
Flexible installation

The symmetrical design of the P-KUBE Lite handle, which is unique in its segment, represents an innovative solution for simplified installation, making the handle compatible with right-hand or left-hand doors. This means that the handle is the same for any type of sliding or hinged door, whether it opens right or left, and regardless of its configuration. The sleek handle design without protruding parts not only improves its look but also increases safety and functionality.



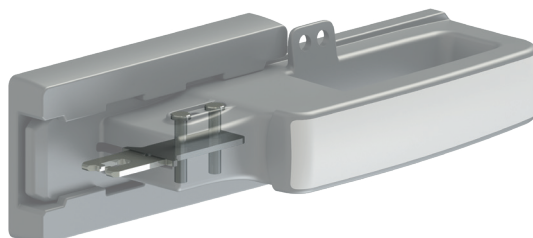
Centring

The new handle features a strong centring pin at the front, which ensures alignment of actuator and switch, guaranteeing correct insertion without the risk of collision between the two components. This also allows a safe re-alignment of the guard to the frame, even in case of axial misalignments.



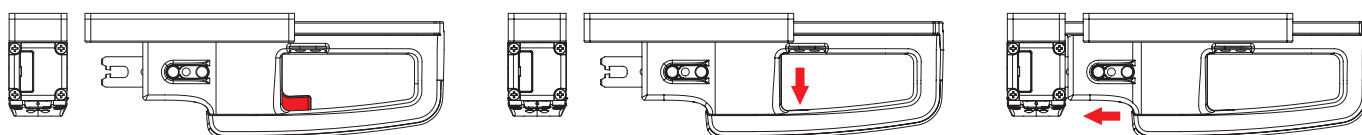
Immovable actuator

The P-KUBE Lite safety-handle actuator is fixed immovably to the handle body: This means that the installer is not required to assemble the actuator and it cannot be removed.



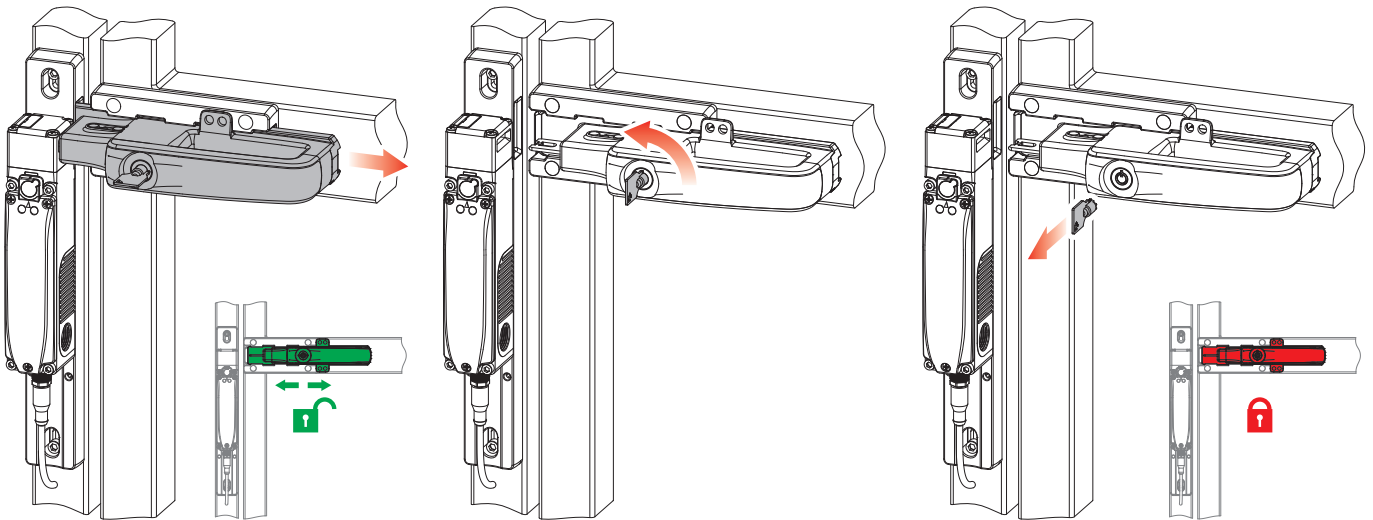
Block button

The P-KUBE Lite safety handle can be equipped with a block button that is automatically activated to block the grip when the handle is in the open position. This option ensures that the handle remains securely in the open position, preventing accidental or undesired displacements that could cause unwanted movement of the handle. The grip is released by simply pressing the block button. This simple and intuitive action allows the handle to return to its normal position, enabling movement and therefore insertion into the switch.



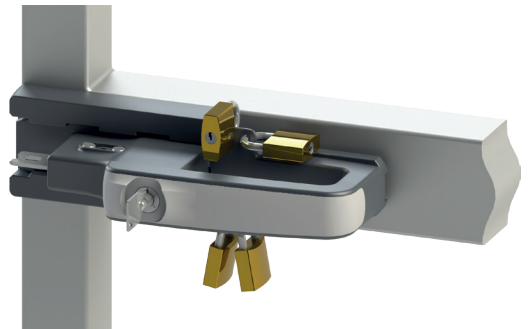
Key lock

The P-KUBE Lite safety handle can be equipped with (coded) tubular or standard locking keys. The lock secures the handle in the fully open position, preventing any accidental or unwanted movement. Only with the handle in the open position can operators remove the key and take it with them during machine maintenance.



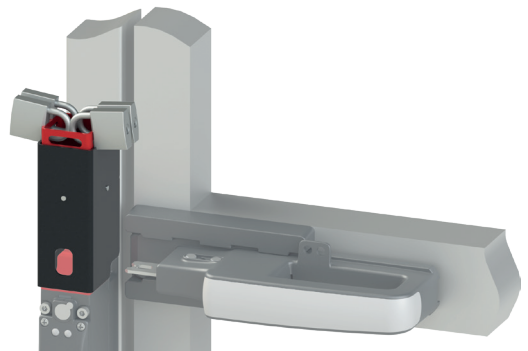
Device for locking the handle in the open position

Four holes on the handle body enable attachment of up to four padlocks to prevent accidental closure of the guard. This means that up to four operators can enter the guard with the certainty that nobody can accidentally reclose the door before all of the operators have exited.



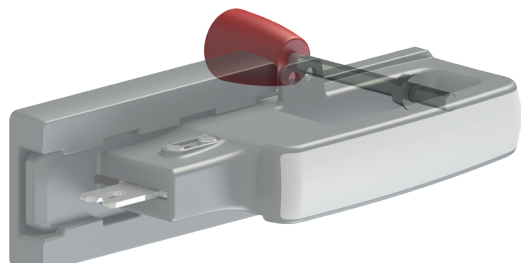
Lock-out: maximum safety with just one movement

The P-KUBE Lite handle can be fitted with a "lock-out device" on the switch support bracket, enabling use of up to 9 padlocks on 7 mm slotted holes to prevent accidental closing of the guard. When the "lock-out device" is active, the centring hole in the bracket and the slot in the switch for the actuator are closed in a single operation. This reliably prevents mechanical closing of the door and electrical commutation of the switch contacts. The "lock-out device" can be unlocked only when all of the padlocks have been removed, i.e. when all of the operators have left the danger zone, preventing accidental closing of the guard. The "lock-out device" fitted on the support bracket is a solution offering greater safety than a locking device integrated into the handle, as it prevents insertion of any back-up actuators into the switch.



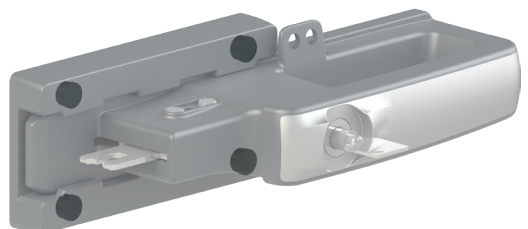
Internal lever for emergency escape

The P-KUBE Lite safety handle can be fitted with an optional lever enabling simple and rapid door opening from the inside in an emergency. This function is essential to guarantee the safety of any personnel who have remained trapped inside a danger zone, allowing quick and efficient exit.

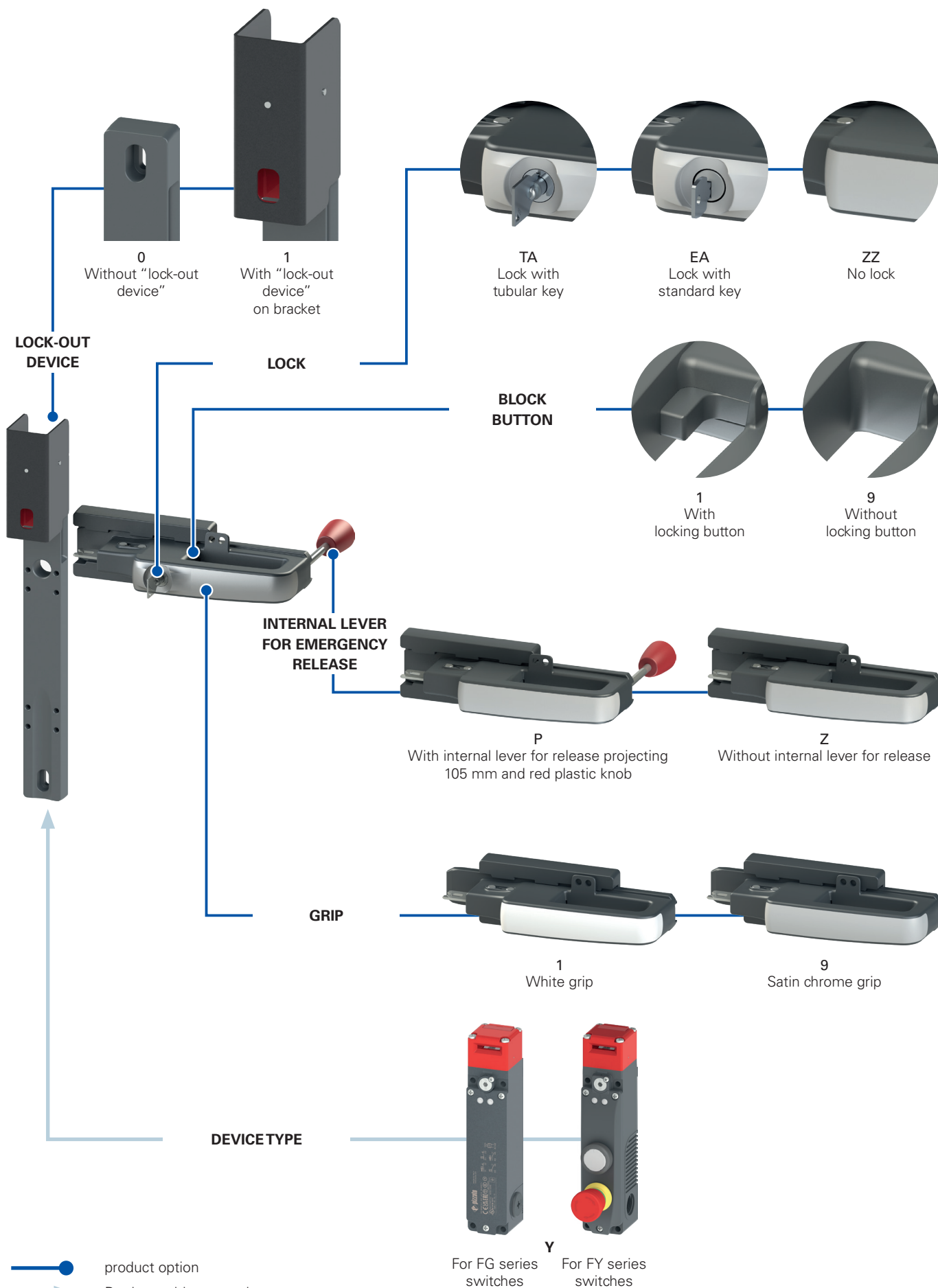


Protection against tampering

The P-KUBE Lite safety handle is supplied complete with snap-on protection caps to be applied to the holes of the fixing screws, so as to prevent access to them: therefore, standard screws can be used instead of tamper-proof screws, ensuring safety against tampering on the device. The caps also prevent the accumulation of soiling and facilitate the cleaning of the handle.



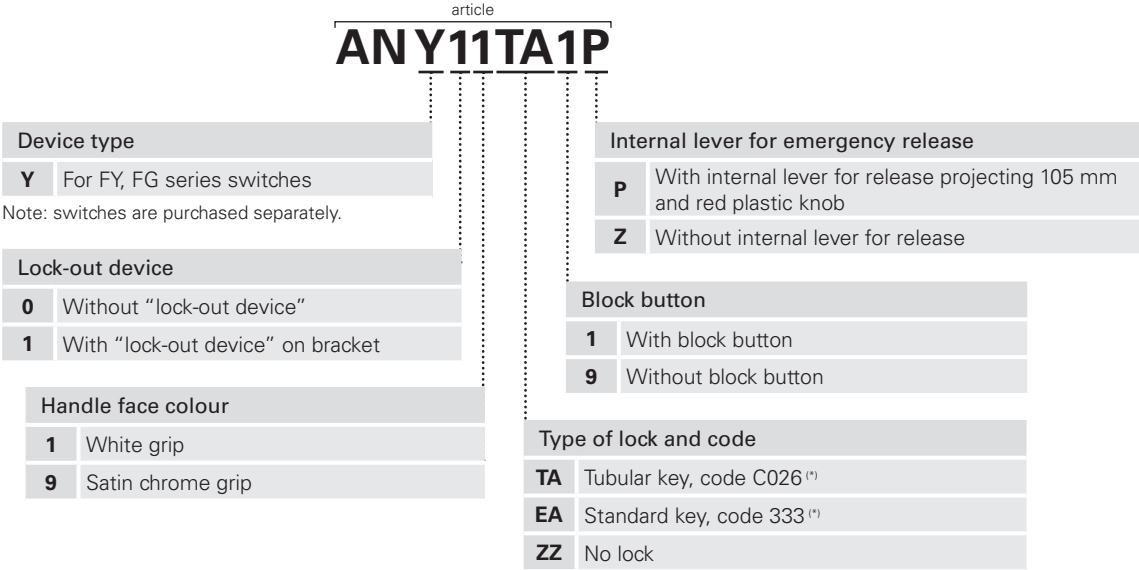
Selection diagram





Code structure

Attention! The feasibility of a code number does not mean the effective availability of a product. Please contact our sales office

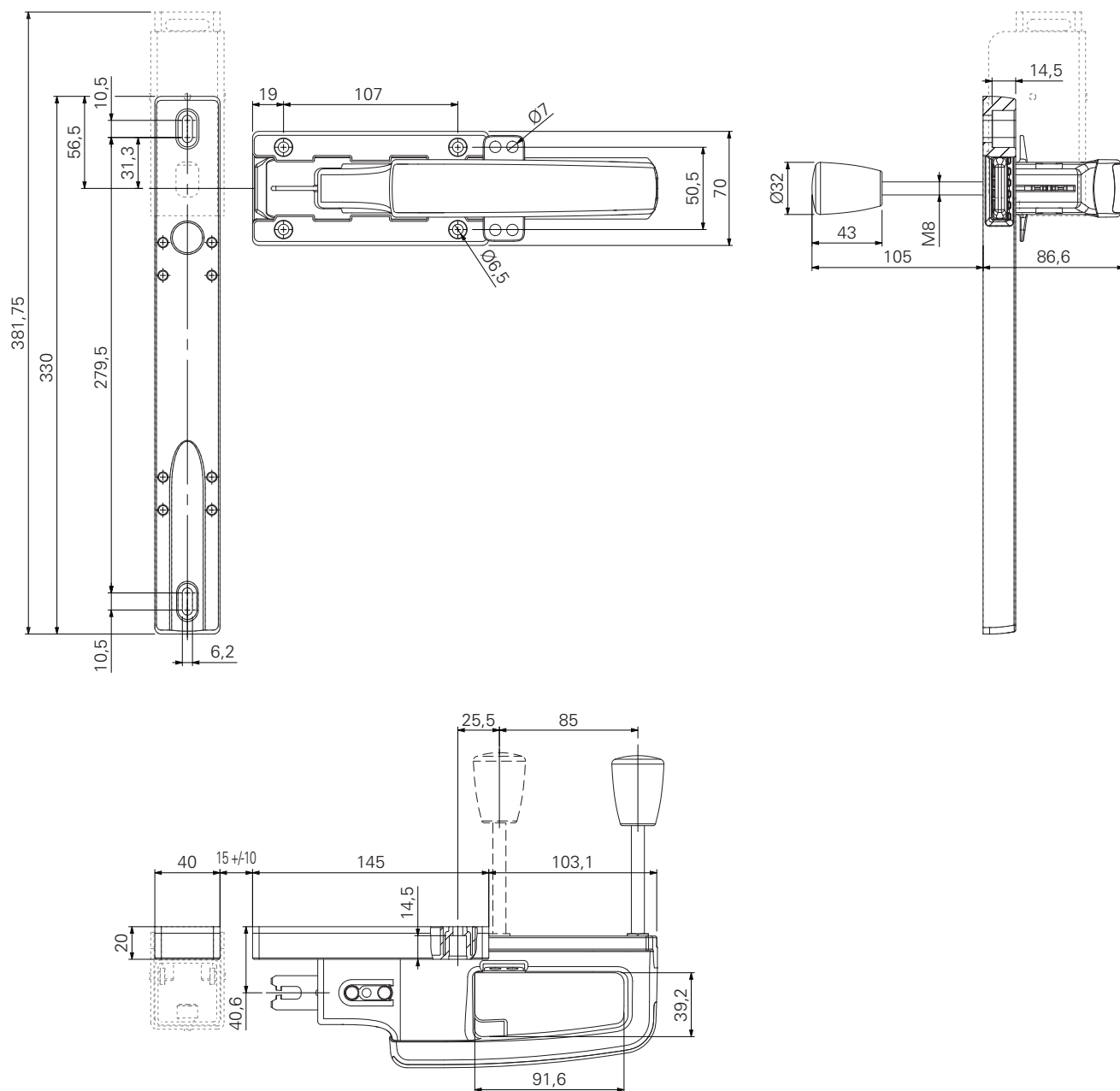


(*) Other key codes available on request.

P-KUBE Lite safety handles for FY and FG series switches

Dimensional drawings

P-KUBE Lite safety handles (articles AN Y●●ZZ●●)

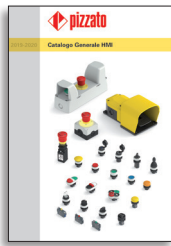


All values in the drawings are in mm

→ The 2D and 3D files are available at www.pizzato.com



General Catalogue
Detection



General Catalogue
HMI



General Catalogue
Safety



General Catalogue
Lift



Website
www.pizzato.com



Pizzato Elettrica s.r.l. via Torino, 1 - 36063 Marostica (VI) Italy
Phone: +39 0424 470 930
E-mail: info@pizzato.com
Website: www.pizzato.com

Any information or application example, connection diagrams included, described in this document are to be intended as purely descriptive. The choice and application of the products in conformity with the standards, in order to avoid damage to persons or goods, is the user's responsibility. The drawings and data contained in this document are not binding and we reserve the right, in order to improve the quality of our products, to modify them at any time without prior notice. All rights to the contents of this publication are reserved in accordance with current legislation on the protection of intellectual property. The reproduction, publication, distribution and modification, total or partial, of all or part of the original material contained therein (including, but not limited to, texts, images, graphics), whether on paper or in electronic form, are expressly prohibited without written permission from Pizzato Elettrica Srl. All rights reserved. © 2021 Copyright Pizzato Elettrica.

ZE FGL35A23-ENG



8 018851 625237