



MASTER LEDtube InstantFit HF T5



MAS LEDtube HF 900mm HO 18.5W 840 T5

The Philips MASTER LEDtube integrates a LED light source into a traditional fluorescent form factor. Its unique design creates a perfectly uniform visual appearance, which cannot be distinguished from traditional fluorescent. These T5 lighting tubes are the right choice for absolute performance and are designed to stand up to everyday conditions. Unparalleled savings thanks to low energy consumption and an exceptionally long lifetime make these T5 LED tubes the choice for every demanding application.

Product data

General Information	
Cap-Base	G5
Nominal lifetime	60,000 hour(s)
Switching Cycle	50,000
Lighting Technology	LED
Flux measurement reference	Sphere

Light Technical	
Color Code	840 [CCT of 4000K]
Beam Angle (Nom)	200 degree(s)
Luminous Flux	2,800 lm
Color Designation	Cool White (CW)
Correlated Color Temperature (Nom)	4000 K
Luminous Efficacy (rated) (Nom)	151 lm/W
Color Consistency	<6
Color rendering index (CRI)	80
LLMF At End Of Nominal Lifetime (Nom)	70 %

Photobiological safety according to EN 62471	RG0
--	-----

Operating and Electrical	
Line Frequency	30K to 100K Hz
Input Frequency	30K to 100K Hz
Power Consumption	18.5 W
Lamp Current (Max)	350 mA
Lamp Current (Min)	120 mA
Starting Time (Nom)	0.5 s
Warm-up time to 60% light	0.5 s
Power Factor (Fraction)	0.9
Voltage (Nom)	60-100 V
Ballast Compatibility	HF
LED alternative to fluorescent lamp power	39 W
Inrush current at mains	-
Max. lamp no. on MCB B type 10A - Mains	-
Max. lamp no. on MCB B type 10A – EM ballast without Compensation Capacitor.	-

MASTER LEDtube InstantFit HF T5

Max. lamp no. on MCB B type 10A – EM ballast with Compensation Capacitor.	-
Max. lamp no. on MCB B type 16A – Mains	-
Max. lamp no. on MCB B type 16A – EM ballast without Compensation Capacitor.	-
Max. lamp no. on MCB B type 16A – EM ballast with Compensation Capacitor.	-

Temperature

T-Case Maximum (Nom)	60 °C
----------------------	-------

Controls and Dimming

Dimmable	Yes - Check ballast compatibility
----------	-----------------------------------

Mechanical and Housing

Bulb Finish	Frosted
Bulb Material	Glass
Product Length	900 mm
Bulb Shape	T5
Net Weight (Piece)	0.115 kg

Approval and Application

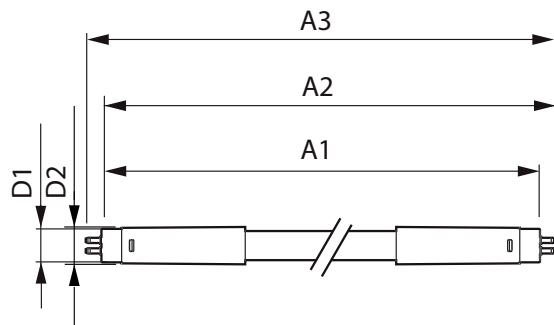
Energy Efficiency Class	D
-------------------------	---

Energy Saving Product	Yes
Approval Marks	RoHS compliance KEMA Keur certificate
Energy Consumption kWh/1000 h	19 kWh
EPREL Registration Number	1407661
CE mark	Yes
EU RoHS compliant	Yes
Ambient temperature range	-20 °C to 45 °C

Product Data

Order product name	MAS LEDtube HF 900mm HO 18.5W 840 T5
Full product name	MAS LEDtube HF 900mm HO 18.5W 840 T5
Full product code	872016916315700
Order code	929003596602
Material Nr. (12NC)	929003596602
Numerator - Quantity Per Pack	1
EAN/UPC - Product/Case	8720169163157
Numerator - Packs per outer box	10
EAN/UPC - Case	8720169163164

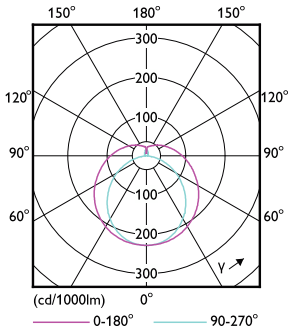
Dimensional drawing



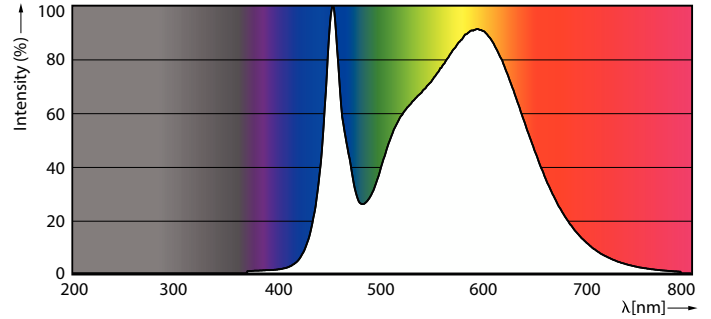
Product	D1	D2	A1	A2	A3
MAS LEDtube HF 900mm HO 18.5W 840 T5	15.5 mm	16/19 mm	849 mm	856 mm	863 mm

MASTER LEDtube InstantFit HF T5

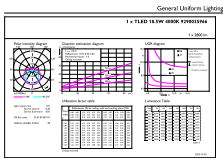
Photometric data



Light Distribution Diagram - MAS LEDtube HF 900mm HO 18.5W 840 T5



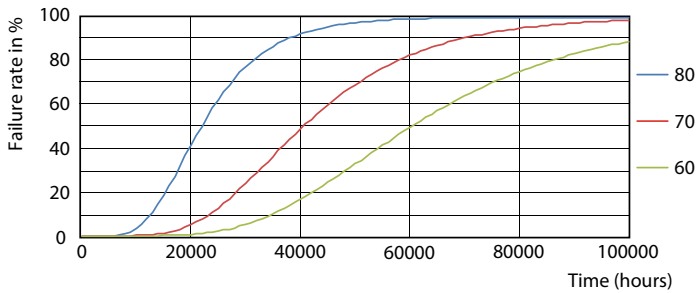
Spectral Power Distribution Colour - MAS LEDtube HF 900mm HO 18.5W 840 T5



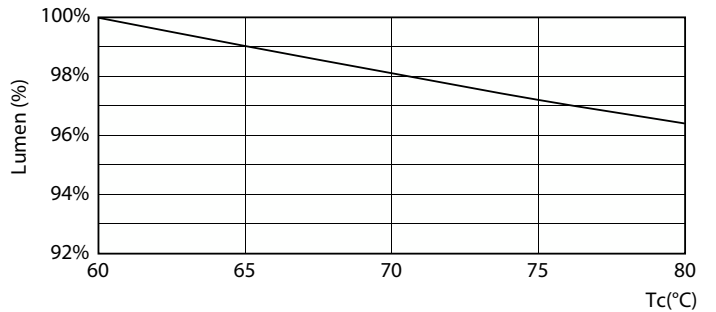
General uniform lighting - MAS LEDtube HF 900mm HO 18.5W 840 T5

General uniform lighting - MAS LEDtube HF 900mm HO 18.5W 840 T5

Lifetime



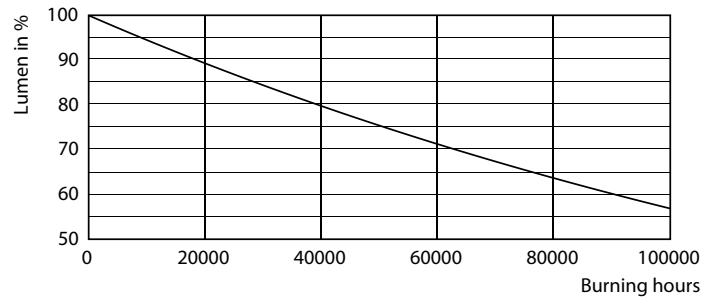
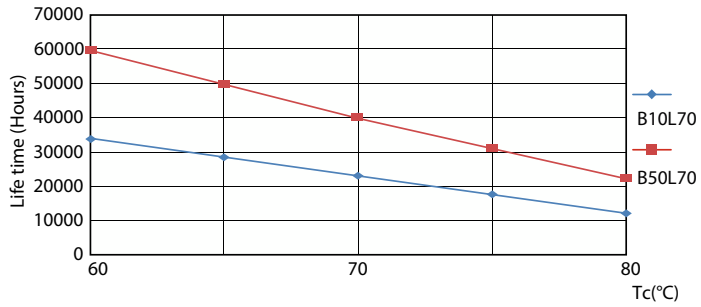
FailureRate



Lumen Maintenance Diagram - MAS LEDtube HF 900mm HO 18.5W 840 T5

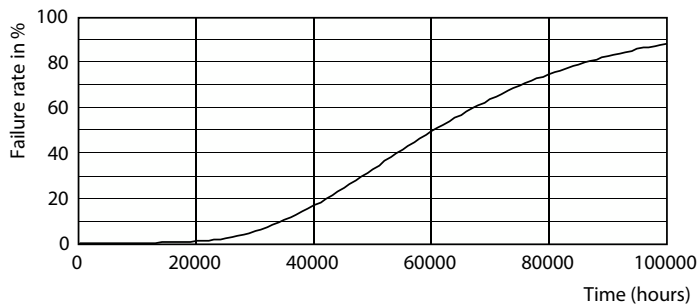
MASTER LEDtube InstantFit HF T5

Lifetime



LifetimeVsTc

Lumen Maintenance Diagram - MAS LEDtube HF 900mm HO 18.5W 840 T5



Life Expectancy Diagram

