

Signal Beacons and Traffic Lights / Traffic Lights

Traffic Light 12-230VAC/DC RD/GN



Part No.: 890.030.00

MECHANICAL DATA

| | |
|------------------------------|--------------------------------|
| Length | 154 mm |
| Height | 349 mm |
| Diameter | 150 mm |
| Materials | PC PC/ABS |
| Dome colour | Green Red |
| Housing colour | Grey |
| Protection category | IP65 |
| Connection | Insulation-displacement contac |
| cross-sectional area minimum | 0,75mm ² / 19AWG |
| cross-sectional area maximum | 1,50mm ² / 16AWG |
| Cable entry | Screwed cable gland |
| Cable entry minimum | d = 5 mm |
| Cable entry maximum | d = 8 mm |
| Tension relief | Present (conforms to VDE) |
| Type of fixing | Base mounting Wall mounting |
| Working temperature minimum | -30°C |
| Working temperature maximum | +50°C |
| Weight with packaging | 1204 g |
| Product weight | 1067 g |

ELECTRICAL DATA

| | |
|------------------------|--------------------------|
| Operating voltage | 12-230V |
| Operating voltage type | AC/DC |
| Protection class | Protection class 2 |
| Pollution degree | 3 |
| Overvoltage category | II |
| Isolation voltage | Ui = 250V; Uimp = 2.500V |
| Power illuminant | Max. 25W |

OPTICAL DATA

| | |
|----------------------|-----------------|
| Light colour | Green Red |
| Service life optical | depends on bulb |
| Lamp fitting/socket | E27 |

APPROVAL DATA

| | |
|------------------------------|--------------------------------|
| Conforms with CE | No |
| Conforms with RoHS directive | Fulfills substance restriction |



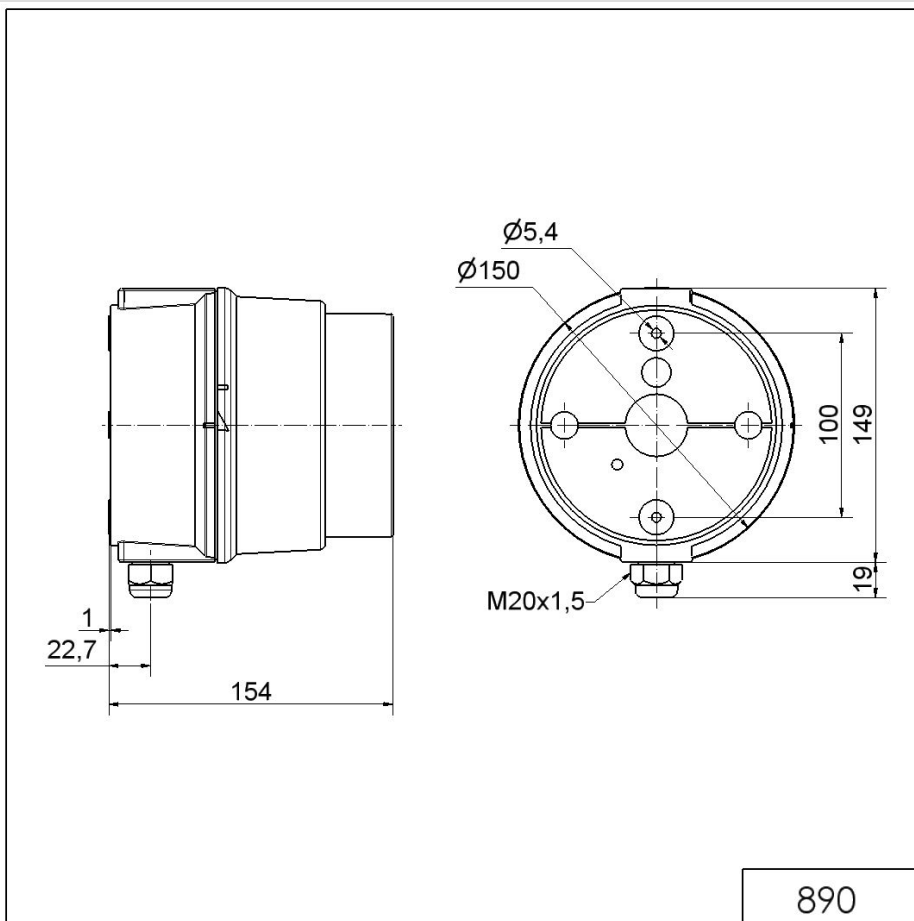
For additional installation and mounting information, refer to the appropriate user guide at www.werma.com. This printed copy is for information only and is subject to alteration.

Signal Beacons and Traffic Lights / Traffic Lights

Traffic Light 12-230VAC/DC RD/GN

| | |
|------------------------------|-----|
| WEEE | Yes |
| Conforms with ATEX-directive | No |
| Conforms with CCC | No |
| Conforms with UL | No |
| Conforms with FCC | No |
| Conforms with IC | No |
| EAC certificate available | Yes |
| Conforms with AS-I | No |
| ICAO Certification | No |
| Conforms with DNV | No |
| Conforms with RoHS CN | No |
| Conforms with VdS | No |

DRAWING



For additional installation and mounting information, refer to the appropriate user guide at www.werma.com. This printed copy is for information only and is subject to alteration.