



CorePro LED PLL



CorePro LED PLL HF 16.5W 830 4P 2G11

Philips CorePro LED PLL is the ideal uplamping solution for downlights & luminaires in a wide range of general lighting applications. It integrates a LED light source into a traditional fluorescent form factor to offer superb energy savings over a lifetime that's twice as long as fluorescent alternatives.

Product data

General Information		Lamp Current (Max)	
Cap-Base	2G11		420 mA
Nominal lifetime	30,000 hour(s)	Lamp Current (Min)	290 mA
Switching Cycle	50,000	Starting Time (Nom)	0.5 s
Lighting Technology	LED	Warm-up time to 60% light	0.5 s
Flux measurement reference	Sphere	Power Factor (Fraction)	0.9
		Voltage (Nom)	53-77 V
		Ballast Compatibility	HF
		LED alternative to fluorescent lamp power	36 W
		Inrush current at mains	-
		Max. lamp no. on MCB B type 10A - Mains	-
		Max. lamp no. on MCB B type 10A – EM ballast without Compensation Capacitor.	-
		Max. lamp no. on MCB B type 10A – EM ballast with Compensation Capacitor.	-
		Max. lamp no. on MCB B type 16A - Mains	-
		Max. lamp no. on MCB B type 16A – EM ballast without Compensation Capacitor.	-
		Max. lamp no. on MCB B type 16A – EM ballast with Compensation Capacitor.	-
Light Technical		Temperature	
Color Code	830 [CCT of 3000K]	T-Case Maximum (Nom)	70 °C
Beam Angle (Nom)	160 degree(s)		
Luminous Flux	2,000 lm		
Color Designation	White (WH)		
Correlated Color Temperature (Nom)	3000 K		
Luminous Efficacy (rated) (Nom)	121.00 lm/W		
Color Consistency	<6		
Color rendering index (CRI)	83		
LLMF At End Of Nominal Lifetime (Nom)	70 %		
Photobiological safety according to EN 62471	RG0		
Operating and Electrical			
Line Frequency	39000-71000 Hz		
Input Frequency	39000-71000 Hz		
Power Consumption	16.5 W		

CorePro LED PLL

Controls and Dimming

Dimmable	No
----------	----

Mechanical and Housing

Bulb Material	Glass
Product Length	405 mm
Bulb Shape	PL-L
Net Weight (Piece)	0.160 kg

Approval and Application

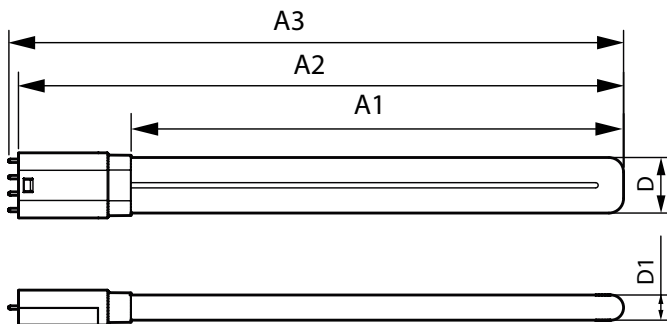
Energy Efficiency Class	E
Energy Saving Product	Yes
Approval Marks	RoHS compliance
Energy Consumption kWh/1000 h	17 kWh
EPREL Registration Number	387352
CE mark	Yes
EU RoHS compliant	Yes

Ambient temperature range	-20 °C to 45 °C
---------------------------	-----------------

Product Data

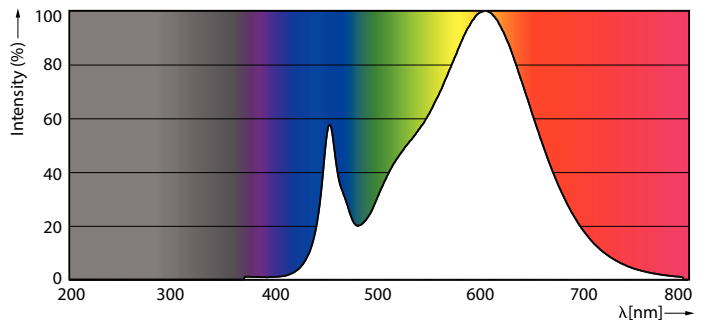
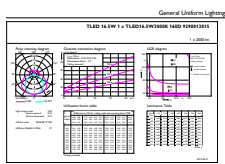
Order product name	CorePro LED PLL HF 16.5W 830 4P 2G11
Full product name	CorePro LED PLL HF 16.5W 830 4P 2G11
Full product code	871869673966200
Order code	929001381502
Material Nr. (12NC)	929001381502
Numerator - Quantity Per Pack	1
EAN/UPC - Product/Case	8718696739662
Numerator - Packs per outer box	10
EAN/UPC - Case	8718696739679

Dimensional drawing



Product	D1	D	A1	A2	A3
CorePro LED PLL HF 16.5W 830 4P 2G11	17 mm	38 mm	330 mm	405 mm	412 mm

Photometric data

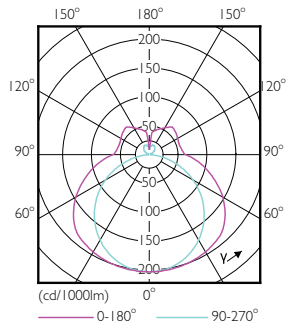


General uniform lighting - CorePro LED PLL HF 16.5W 830 4P 2G11

Spectral Power Distribution Colour - CorePro LED PLL HF 16.5W 830 4P 2G11

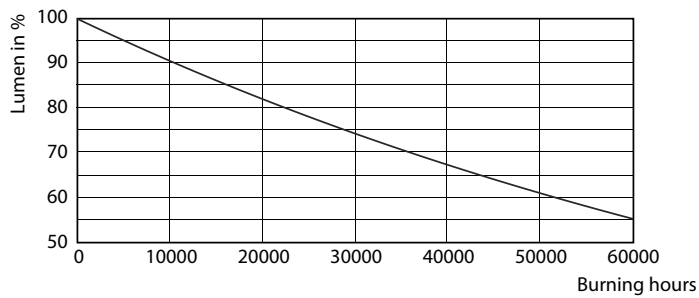
CorePro LED PLL

Photometric data

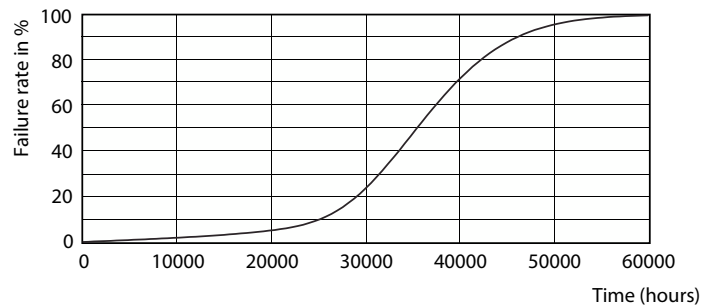


Light Distribution Diagram - CorePro LED PLL HF 16.5W 830 4P 2G11

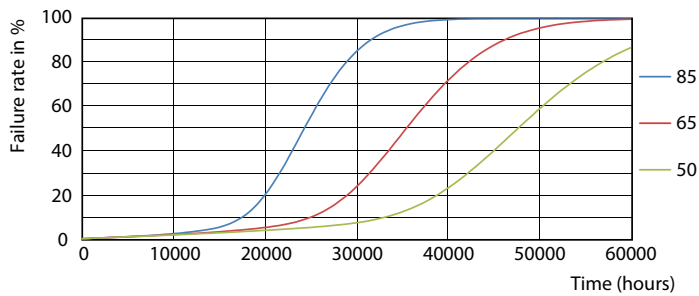
Lifetime



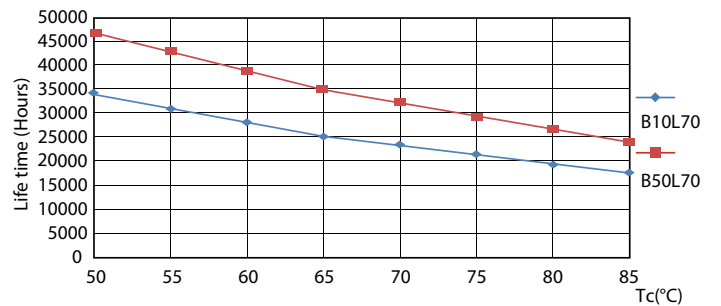
Lumen Maintenance Diagram - CorePro LED PLL HF 16.5W 830 4P 2G11



LEDtube PLC 400mm 16-5W 2G11 830 2000lm



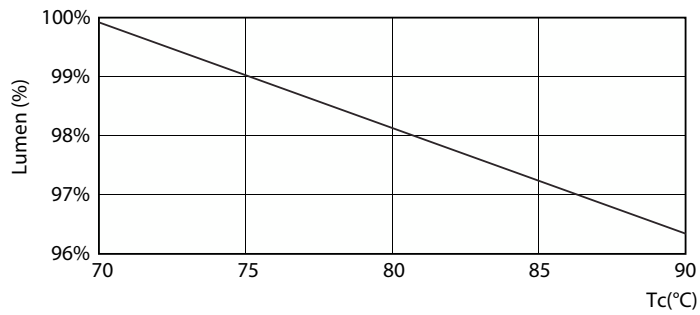
LEDtube PLC 400mm 16-5W 2G11 830 2000lm



LEDtube PLC 400mm 16-5W 2G11 830 2000lm

CorePro LED PLL

Lifetime



Lumen Maintenance Diagram - CorePro LED PLL HF 16.5W 830 4P 2G11

