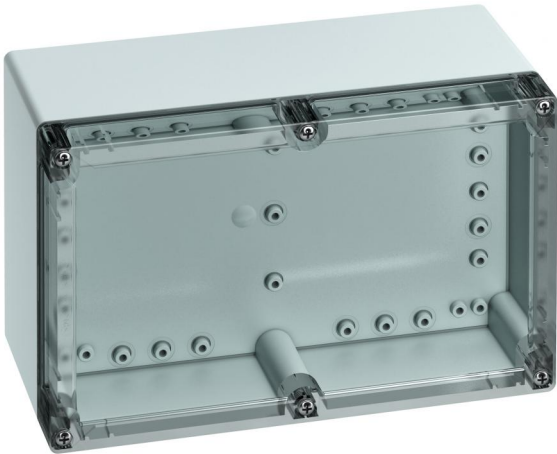


Empty enclosure

TG PC 2516-12-to



TG PC 2516-12-to

Empty enclosure

CUSTOMIZABLE

Productnumber: 20151201

Dimensions: 252 x 162 x 120 mm

Empty enclosure, with protection class IP66/IP67, Polycarbonate, certified according to DLG (Ammonia resistance), UL (UL 50 & CSA 22.2 No. 94.1-07, UL 50E & CSA C22.2 No. 94.2-07), $U_i=690V$ AC, $U_i=1000V$ DC, Internal fastening points, for installations in the industrial environments and protected outside areas, with quick release

Box: Polycarbonate, grey, Lid: Polycarbonate, transparent, smooth sidewalls

**Accessories supplied:
Cover retainer, 4 fastening screws for accessories**



Technical Data

electrical characteristics

Rated insulation voltage AC:	690 V
Rated insulation voltage DC:	1000 V
Protection class:	II
Type of protection:	IP66/IP67
UL Type Rating:	12

Colours

Base unit colour:	grey
Cover colour:	transparent

Dimensions

Width:	252 mm
Length:	162 mm
Height:	120 mm

Material characteristics

suitable for exterior use:	yes
Industry quality:	yes
Halogen free:	yes
Flammability class according with UL94:	V2
Glow-wire flammability according to EN 60695-2-11:	960 °C

mechanical properties

Type of fastening:	Wall/ceiling mounting
Impact strength:	IK08
Stackable:	yes
Type of top part:	Cover

Ambient conditions

max. relative humidity 25°C:	95 %
max. relative humidity 40°C:	50 %
Min. ambient temperature:	-35 °C
Max. ambient temperature:	80 °C
24h ambient temperature:	60 °C

Material

Base unit material:	Polycarbonate
Cover material:	Polycarbonate
Sealing material:	Polyurethane
Cover screw material:	Stainless steel V2A

Certificates

Test mark:	DLG (Ammonia resistance)
Test mark:	UL (UL 50 & CSA 22.2 No. 94.1-07, UL 50E & CSA C22.2 No. 94.2-07)

Accessories

[18200101 - TG ISS - Interior hinge set](#)

[18200201 - TG ABL - External fixing lugs kit](#)

[18200501 - TG PST2 - Sealing kit](#)

[18200701 - TG DVS-57 - Cover retainer](#)

[18601201 - TG MPI-2516 - Mounting plate](#)

[18701201 - TG MPS-2516 - Mounting plate](#)

[19599501 - LFR - Stepped drill](#)

[19722201 - TS 15-220 - Standard rail](#)

[19822201 - NS 35-220 - Standard rail](#)

[26241201 - DAE M12 - Pressure balance element](#)