

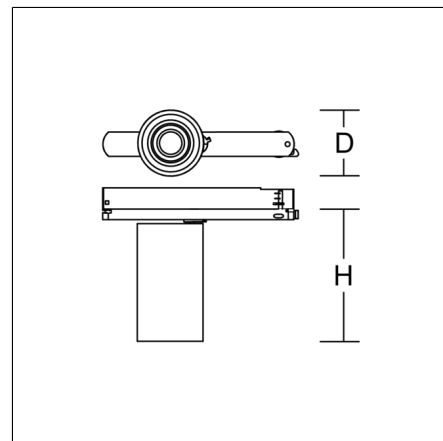
DEECOS S mini track-in

742257.002 | Surface mounted projector



Surface mounted projectors
4051859813866
D 87, H 135

Track on ceiling, Wall track
traffic white, matt (RAL 9016)



LED surface-mounted projector in modern design with no visible cooling ribs. Housing: die-cast aluminium, powder-coated. Rotation range: 356°. Swivel range: 90°. Black plastic ring and recessed LED to prevent glare from the side. With multi adaptor for 3-circuit tracks 230 V. Suitable for Track on ceiling, Wall track. Track-in driver integrated into the adapter. High quality converter without flickering and stroboscopic effect. The following accessories can be mounted without use of tools: interchangeable lenses, decorative glasses, honeycomb louvre, clear and frosted diffusers, white interchangeable plastic ring.

Product specifications

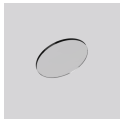
Diameter D	87 mm
Height H	135 mm
Weight	0.62 kg
Light source	LED
Colour temperature	3000 K
Rated luminous flux	1950 lm
System power	20 W
System efficiency	98 lm/W
Glare evaluation UGR (4H 8H)	20,7
Beam angle	40°/28°
Rated life	50000 h (L90/B10)
Colour rendering index (CRI)	92
Colour tolerance	2
Photobiological safety according to EN 62471	Risk group 1
Driver	Converter
Control	on/off
Voltage	220 - 240 V / 50 - 60 Hz
Luminaires on B10A fuse	33
Luminaires on B16A fuse	53
Luminaires on C10A fuse	53
Luminaires on C16A fuse	84
Inrush current / Inrush current duration	9.5 A / 16 µs
CIE Flux Code / CEN Flux Code	95 100 100 100 100
Type of protection	IP 20
Protection class	II
Filament test	650°C - 30 seconds
Impact resistance	IK06
Ambient temperature	25 °C
Conformity mark	CE, EAC

DEECOS S mini track-in

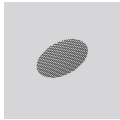
742257.002 | Surface mounted projector



Accessories



982370.000
Diffuser, transparent



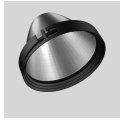
982371.003
Anti-glare honeycomb louvre



982369.013
Medium lens



982421.002
White plastic ring for lens.



982368.013
Reflector medium



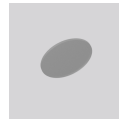
982369.033
Wide flood lens



982419.002
White plastic ring for reflector.



982647.002
Decorative glass opal matt



982370.010
Diffuser, satinated



982369.003
Spot lens



982369.023
Flood lens



982368.003
Reflector spot



982368.023
Reflector flood



982369.043
Oval corridor lens



982368.033
Reflector wide flood



982648.002
Decorative glass opal matt