



MASTER LEDtube EM/ Mains T8

MASTER LEDtube 1200mm UO 15.5W 840 T8

The Philips MASTER LEDtube integrates a LED light source into a traditional fluorescent form factor. Its unique design creates a perfectly uniform visual appearance which cannot be distinguished from traditional fluorescent. For those that are looking for value for money within limited budget and re-lamping efforts for better light effect and lifetime.

Warnings and Safety

- NOTES: The overall energy efficiency and light distribution of any installation that uses these lamps are determined by the design of the installation.

Product data

| General Information | | LLMF At End Of Nominal Lifetime (Nom) 70 % | |
|------------------------------------|---|--|-------------|
| Cap-Base | G13 ROT (Rotating) [Medium Bi-Pin Fluorescent] | Operating and Electrical | |
| EU RoHS compliant | Yes | Input Frequency | 50 to 60 Hz |
| Nominal Lifetime (Nom) | 60000 h | Power (Nom) | 15.5 W |
| Switching Cycle | 200000X | Lamp Current (Max) | 73 mA |
| Light Technical | | Lamp Current (Min) | 67 mA |
| Color Code | 840 [CCT of 4000K] | Starting Time (Nom) | 0.5 s |
| Beam Angle (Nom) | 160 ° | Warm Up Time to 60% Light (Nom) | 0.5 s |
| Luminous Flux (Nom) | 2500 lm | Power Factor (Nom) | 0.9 |
| Color Designation | Cool White (CW) | Voltage (Nom) | 220-240 V |
| Correlated Color Temperature (Nom) | 4000 K | Temperature | |
| Luminous Efficacy (rated) (Nom) | 161.00 lm/W | T-Ambient (Max) | 45 °C |
| Color Consistency | <6 | T-Ambient (Min) | -20 °C |
| Color Rendering Index (Nom) | 83 | T-Storage (Max) | 65 °C |

MASTER LEDtube EM/Mains T8

| | |
|----------------------|--------|
| T-Storage (Min) | -40 °C |
| T-Case Maximum (Nom) | 55 °C |

Controls and Dimming

| | |
|----------|----|
| Dimmable | No |
|----------|----|

Mechanical and Housing

| | |
|----------------|---------|
| Bulb Material | Plastic |
| Product Length | 1200 mm |

Approval and Application

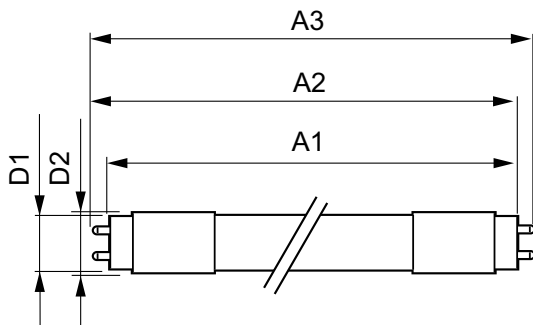
| | |
|-------------------------------|--|
| Energy Efficiency Label (EEL) | A++ |
| Energy Saving Product | Yes |
| Approval Marks | RoHS compliance TUV CE marking KEMA Keur certificate |

| | |
|-------------------------------|--------|
| Energy Consumption kWh/1000 h | 16 kWh |
|-------------------------------|--------|

Product Data

| | |
|---------------------------------|---------------------------------------|
| Full product code | 871869964723000 |
| Order product name | MASTER LEDtube 1200mm UO 15.5W 840 T8 |
| EAN/UPC - Product | 8718699647230 |
| Order code | 929002020602 |
| Numerator - Quantity Per Pack | 1 |
| Numerator - Packs per outer box | 10 |
| Material Nr. (12NC) | 929002020602 |
| Net Weight (Piece) | 0.251 kg |

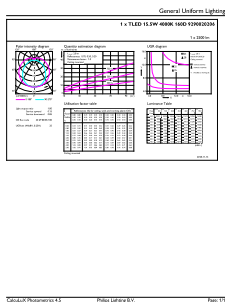
Dimensional drawing



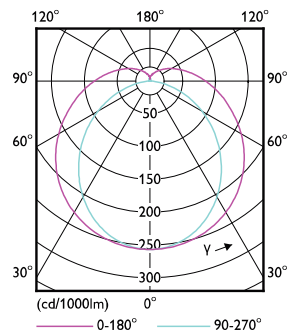
TLED 4ft 220-240V15.5-36W 2500lm4000KG13

| Product | D1 | D2 | A1 | A2 | A3 |
|---------------------------------------|---------|-------|-----------|-----------|-----------|
| MASTER LEDtube 1200mm UO 15.5W 840 T8 | 25.8 mm | 28 mm | 1198.2 mm | 1205.3 mm | 1212.4 mm |

Photometric data



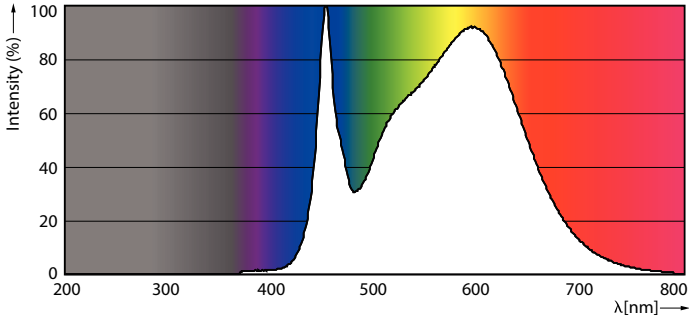
TLED_4ft_220-240V15.5-36W_2500lm_4000K_G13



TLED_4ft_220-240V15.5-36W_G13-LDD

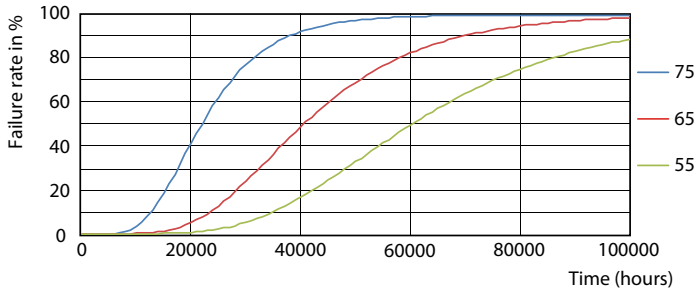
MASTER LEDtube EM/Mains T8

Photometric data

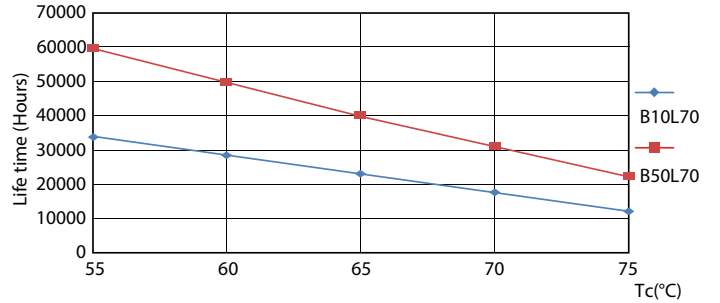


TLED_4ft_220-240V15.5-36W_2500lm_4000K_G13

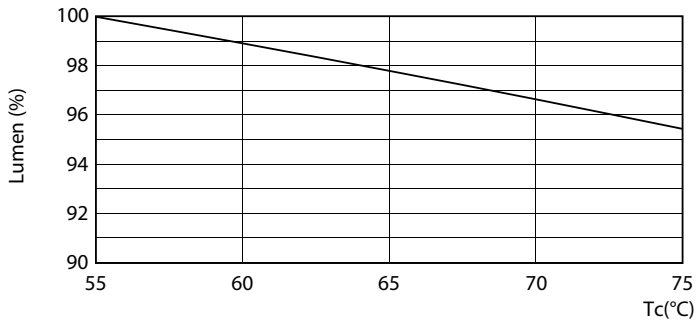
Lifetime



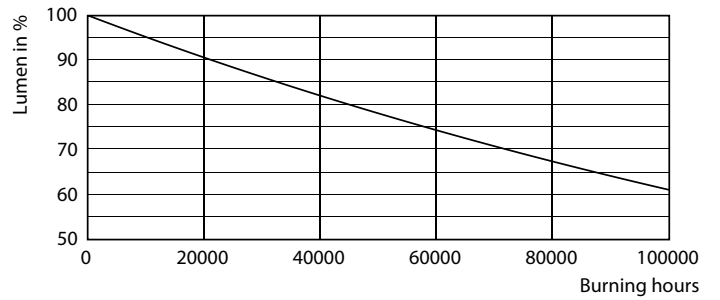
TLED_220-240V_G13-FailureRate



TLED_220-240V_G13-LifetimeVsTc



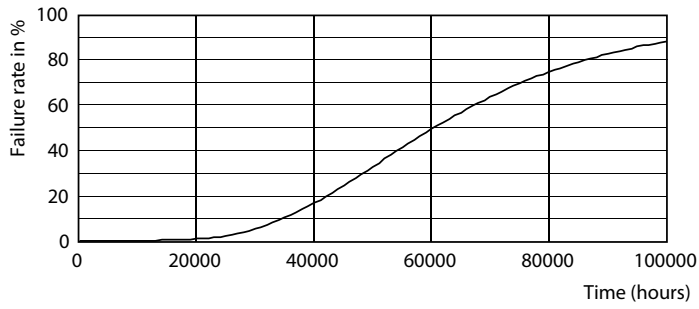
TLED_220-240V_G13-LumenVsTc



TLED_220-240V_G13

MASTER LEDtube EM/Mains T8

Lifetime



TLED_220-240V_G13

