



MASTER LEDtube InstantFit HF T5



MAS LEDtube HF 1500mm HO 26W 830 T5 OE

The Philips MASTER LEDtube integrates a LED light source into a traditional fluorescent form factor. Its unique design creates a perfectly uniform visual appearance, which cannot be distinguished from traditional fluorescent. These T5 lighting tubes are the right choice for absolute performance and are designed to stand up to everyday conditions. Unparalleled savings thanks to low energy consumption and an exceptionally long lifetime make these T5 LED tubes the choice for every demanding application.

Product data

| General Information | | Photobiological safety according to EN 62471 | |
|---------------------------------------|--------------------|--|----------------|
| Cap-Base | G5 | RG0 | |
| Nominal lifetime | 60,000 hour(s) | Operating and Electrical | |
| Switching Cycle | 50,000 | Line Frequency | 20K to 140K Hz |
| Lighting Technology | LED | Input Frequency | 20K to 140K Hz |
| Flux measurement reference | Sphere | Power Consumption | 26 W |
| Light Technical | | Lamp Current (Max) | 420 mA |
| Color Code | 830 [CCT of 3000K] | Lamp Current (Min) | 150 mA |
| Beam Angle (Nom) | 200 degree(s) | Starting Time (Nom) | 0.5 s |
| Luminous Flux | 3,700 lm | Warm-up time to 60% light | 0.5 s |
| Color Designation | White (WH) | Power Factor (Fraction) | 0.9 |
| Correlated Color Temperature (Nom) | 3000 K | Voltage (Nom) | 60-120 V |
| Luminous Efficacy (rated) (Nom) | 142.00 lm/W | Ballast Compatibility | HF |
| Color Consistency | <6 | LED alternative to fluorescent lamp power | 49 W |
| Color rendering index (CRI) | 80 | Inrush current at mains | - |
| LLMF At End Of Nominal Lifetime (Nom) | 70 % | Max. lamp no. on MCB B type 10A - Mains | - |
| | | Max. lamp no. on MCB B type 10A – EM ballast without Compensation Capacitor. | - |

MASTER LEDtube InstantFit HF T5

| | |
|--|---|
| Max. lamp no. on MCB B type 10A – EM ballast with Compensation Capacitor. | - |
| Max. lamp no. on MCB B type 16A – Mains | - |
| Max. lamp no. on MCB B type 16A – EM ballast without Compensation Capacitor. | - |
| Max. lamp no. on MCB B type 16A – EM ballast with Compensation Capacitor. | - |

Temperature

| | |
|----------------------|-------|
| T-Case Maximum (Nom) | 50 °C |
|----------------------|-------|

Controls and Dimming

| | |
|----------|-----------------------------------|
| Dimmable | Yes - Check ballast compatibility |
|----------|-----------------------------------|

Mechanical and Housing

| | |
|--------------------|----------|
| Bulb Finish | Frosted |
| Bulb Material | Glass |
| Product Length | 1,500 mm |
| Bulb Shape | T5 |
| Net Weight (Piece) | 0.196 kg |

Approval and Application

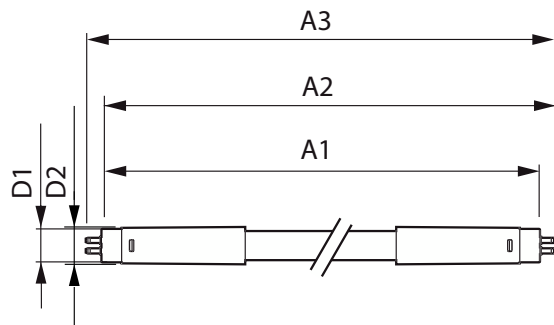
| | |
|-------------------------|---|
| Energy Efficiency Class | E |
|-------------------------|---|

| | |
|-------------------------------|---------------------------------------|
| Energy Saving Product | Yes |
| Approval Marks | RoHS compliance KEMA Keur certificate |
| Energy Consumption kWh/1000 h | 26 kWh |
| EPREL Registration Number | 1384143 |
| CE mark | Yes |
| EU RoHS compliant | Yes |
| Ambient temperature range | -20 °C to 45 °C |

Product Data

| | |
|---------------------------------|--|
| Order product name | MAS LEDtube HF 1500mm HO 26W 830 T5 OE |
| Full product name | MAS LEDtube HF 1500mm HO 26W 830 T5 OE |
| Full product code | 871869974957600 |
| Order code | 929002352302 |
| Material Nr. (12NC) | 929002352302 |
| Numerator - Quantity Per Pack | 1 |
| EAN/UPC - Product/Case | 8718699749576 |
| Numerator - Packs per outer box | 10 |
| EAN/UPC - Case | 8718699749583 |

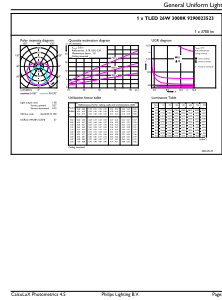
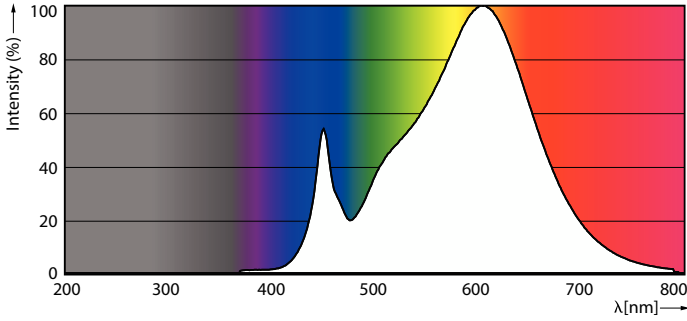
Dimensional drawing



| Product | D1 | D2 | A1 | A2 | A3 |
|--|---------|-------|----------|----------|----------|
| MAS LEDtube HF 1500mm HO 26W 830 T5 OE | 15.5 mm | 19 mm | 1,449 mm | 1,456 mm | 1,463 mm |

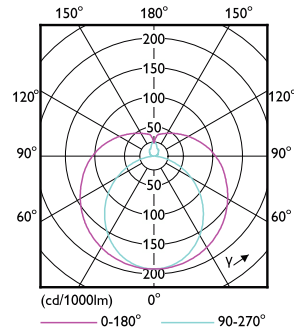
MASTER LEDtube InstantFit HF T5

Photometric data



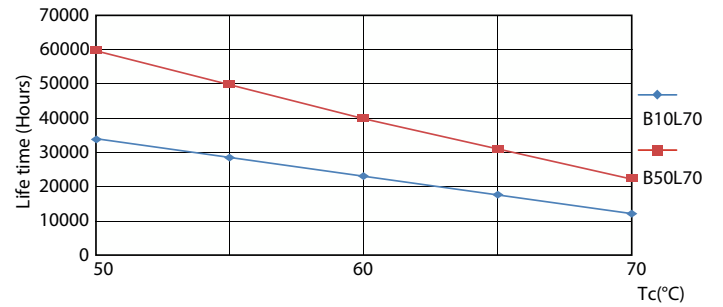
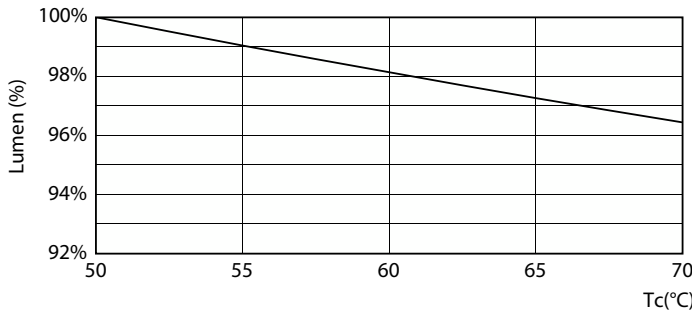
Spectral Power Distribution Colour - MAS LEDtube HF 1500mm HO 26W 830 T5 OE

General uniform lighting - MAS LEDtube HF 1500mm HO 26W 830 T5 OE



Light Distribution Diagram - MAS LEDtube HF 1500mm HO 26W 830 T5 OE

Lifetime

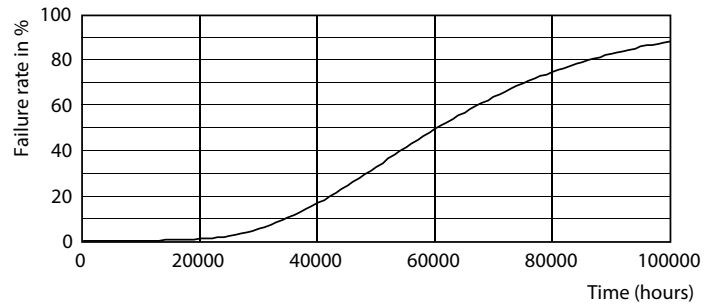
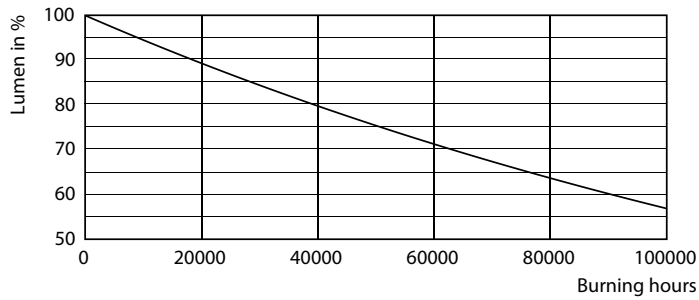


Lumen Maintenance Diagram - MAS LEDtube HF 1500mm HO 26W 830 T5 OE

LEDtube 60K 5070 LifetimeVsTc-LED

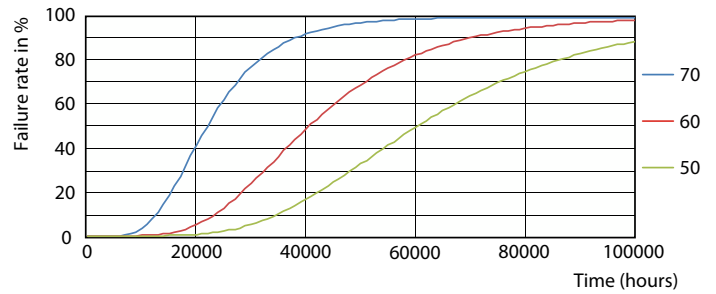
MASTER LEDtube InstantFit HF T5

Lifetime



Lumen Maintenance Diagram - MAS LEDtube HF 1500mm HO 26W 830 T5 OE

Life Expectancy Diagram



LEDtube 60K 5070 FailureRate-LED

