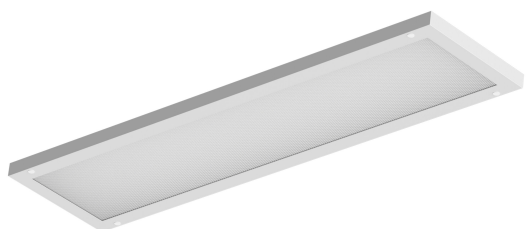


# PRODUCT DATASHEET

## PL INT SF 1200 V 35W 840 UGR19

PANEL INTEGRATED SURFACE UGR19 | Surface mounted panel luminaires panel luminaires with low glare, for 600 x 600 mm and 1200x300 ceiling systems



---

### Areas of application

- Direct replacement for luminaires with fluorescent lamps
- Offices, conference rooms
- Reception areas, foyers, corridors, elevators

---

### Product benefits

- High lumen output reduces the total number of panels per installation
- Good glare reduction (UGR < 19)
- Low flicker light thanks to special electronic control gear
- Easy and quick installation
- Energy savings thanks to system efficacy of 120 lm/W
- 5 years guarantee

---

### Product features

- Integrated driver
- Lifetime (L70/B50): up to 72,000 h (at 25 °C)
- Lifetime (L80/B10): up to 50,000 h (at 25 °C)

## TECHNICAL DATA

### Electrical data

|                                                             |             |
|-------------------------------------------------------------|-------------|
| Nominal wattage                                             | 35.00 W     |
| Nominal voltage                                             | 220...240 V |
| Mains frequency                                             | 50 Hz       |
| Nominal current                                             | 160.000 mA  |
| Inrush current                                              | 0.16 A      |
| Max. number of luminaires per miniature circuit breaker B16 | 18          |
| Max. number of luminaires per miniature circuit breaker C10 | 15          |
| Max. number of luminaires per miniature circuit breaker C16 | 24          |
| Protection class                                            | II          |

### Photometrical data

|                          |          |
|--------------------------|----------|
| Luminous flux            | 3675 lm  |
| Luminous efficacy        | 105 lm/W |
| Color temperature        | 4000 K   |
| Color rendering index Ra | > 80     |
| Beam angle               | 90 °     |

### Dimensions & Weight

|                |            |
|----------------|------------|
| Length         | 1195.00 mm |
| Width          | 295.00 mm  |
| Height         | 32.00 mm   |
| Product weight | 2800.00 g  |



PL INT SF 1200 V 840

### Materials & Colors

|               |          |
|---------------|----------|
| Product color | White    |
| Housing color | White    |
| Body material | Aluminum |

### Application & Mounting

|                    |      |
|--------------------|------|
| Type of protection | IP20 |
|--------------------|------|

|                         |        |
|-------------------------|--------|
| Dimmable                | No     |
| Application environment | Indoor |






### Control gear

|                |        |
|----------------|--------|
| Output current | 125 mA |
|----------------|--------|

### Certificates & Standards

|                                  |                     |
|----------------------------------|---------------------|
| Replaceable light source (EPREL) | By the end consumer |
|----------------------------------|---------------------|

### DOWNLOAD DATA

| Documents and certificates                                                         |                                        | Document name                      |
|------------------------------------------------------------------------------------|----------------------------------------|------------------------------------|
|    | User instruction / safety instructions | PL INT SF 600/1200 V 840           |
|    | Addon technical information            | PL INT SF 600/1200 V 840           |
|    | Legal information                      | PANEL INTEGRATED V                 |
|   | Legal information                      | Informationstext 18 Abs 4 ElektroG |
|  | Declarations of conformity             | PANEL INTEGRATED V                 |

### LOGISTICAL DATA

| Product code  | Packaging unit (Pieces/Unit) | Dimensions (length x width x height) | Gross weight | Volume                |
|---------------|------------------------------|--------------------------------------|--------------|-----------------------|
| 4099854188510 | Folding box<br>1             | 317 mm x 45 mm x 1,218 mm            | 3235.00 g    | 17.37 dm <sup>3</sup> |
| 4099854242595 | Shipping box<br>3            | 1,237 mm x 157 mm x 349 mm           | 10798.00 g   | 67.78 dm <sup>3</sup> |

The mentioned product code describes the smallest quantity unit which can be ordered. One shipping unit can contain one or more single products. When placing an order, for the quantity please enter single or multiples of a shipping unit.

### DISCLAIMER

Subject to change without notice. Errors and omission excepted. Always make sure to use the most recent release.