



# MASTER LEDtube EM/ Mains T8



## MASTER LEDtube 600mm HO 7.6W840 T8

The Philips MASTER LEDtube integrates a LED light source into a traditional fluorescent form factor. Its unique design creates a perfectly uniform visual appearance which cannot be distinguished from traditional fluorescent. For those that are looking for value for money within limited budget and re-lamping efforts for better light effect and lifetime.

### Warnings and Safety

• -

### Product data

General Information		Photobiological safety according to EN 62471	
Cap-Base	G13 ROT	RG0	
Nominal lifetime	75,000 hour(s)		
Switching Cycle	200,000		
Lighting Technology	LED		
Flux measurement reference	Sphere		
Light Technical		Operating and Electrical	
Color Code	840 [CCT of 4000K]	Input Frequency	50 to 60 Hz
Beam Angle (Nom)	160 degree(s)	Power Consumption	7.6 W
Luminous Flux	1,150 lm	Lamp Current (Max)	40 mA
Color Designation	Cool White (CW)	Lamp Current (Min)	30 mA
Correlated Color Temperature (Nom)	4000 K	Starting Time (Nom)	0.5 s
Luminous Efficacy (rated) (Nom)	151 lm/W	Warm-up time to 60% light	0.5 s
Color Consistency	<6	Power Factor (Fraction)	0.9
Color rendering index (CRI)	80	Voltage (Nom)	220-240 V
LLMF At End Of Nominal Lifetime (Nom)	70 %	LED alternative to fluorescent lamp power	18 W
		Inrush current at mains	7
		Max. lamp no. on MCB B type 10A - Mains	105
		Max. lamp no. on MCB B type 10A – EM ballast without Compensation Capacitor.	125

MASTER LEDtube EM/Mains T8

Max. lamp no. on MCB B type 10A – EM ballast with Compensation Capacitor.	30
Max. lamp no. on MCB B type 16A – Mains	170
Max. lamp no. on MCB B type 16A – EM ballast without Compensation Capacitor.	290
Max. lamp no. on MCB B type 16A – EM ballast with Compensation Capacitor.	49

Temperature

T-Case Maximum (Nom)	50 °C
----------------------	-------

Controls and Dimming

Dimmable	No
----------	----

Mechanical and Housing

Bulb Finish	Frosted
Bulb Material	Plastic
Product Length	600 mm
Bulb Shape	T8
Net Weight (Piece)	0.095 kg

Approval and Application

Energy Efficiency Class	D
Energy Saving Product	Yes
Approval Marks	RoHS compliance CE marking KEMA Keur certificate ENEC certificate

Energy Consumption kWh/1000 h	8 kWh
EPREL Registration Number	2144206
CE mark	Yes
EU RoHS compliant	Yes
Flickering value (PstLM) – Flickering value as per EN 61000-3-3	0.1
Stroboscopic effect visibility measure (SVM)	0.1
Ambient temperature range	-20 to +45 °C

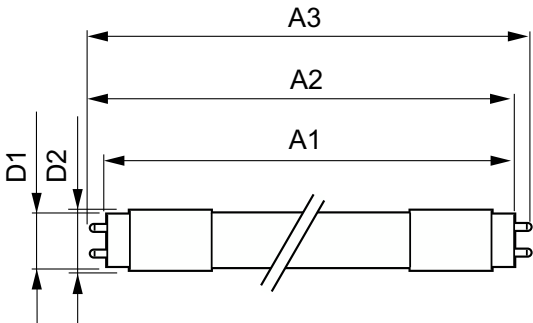
Application Conditions

can it be used in closed luminaires	Yes
-------------------------------------	-----

Product Data

Order product name	MAS LEDtube 600mm HO 7.6W840 T8
Full product name	MASTER LEDtube 600mm HO 7.6W840 T8
Full product code	872110304417400
Order code	04417400
Material Nr. (12NC)	929004260302
Numerator – Quantity Per Pack	1
EAN/UPC – Product/Case	8721103044174
Numerator – Packs per outer box	10
EAN/UPC – Case	8721103044181

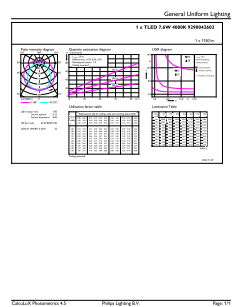
Dimensional drawing



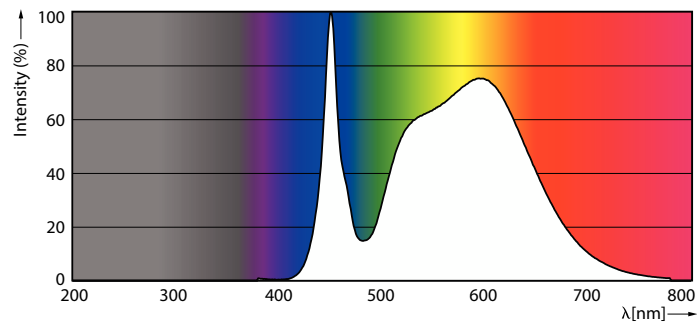
Product	D1	D2	A1	A2	A3
MAS LEDtube 600mm HO 7.6W840 T8	25.8 mm	28 mm	588.5 mm	595.5 mm	602.5 mm

MASTER LEDtube EM/Mains T8

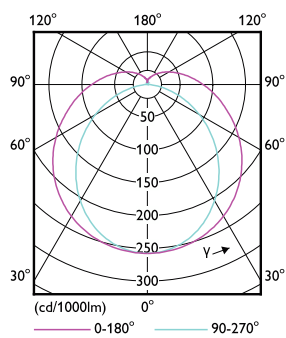
Photometric data



General uniform lighting - MAS LEDtube 600mm HO 7.6W840 T8

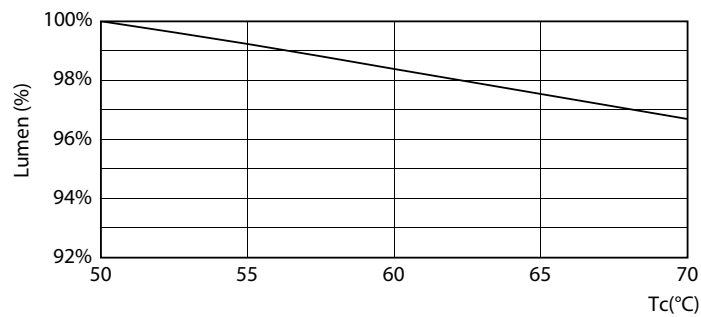


Spectral Power Distribution Colour - MAS LEDtube 600mm HO 7.6W840 T8

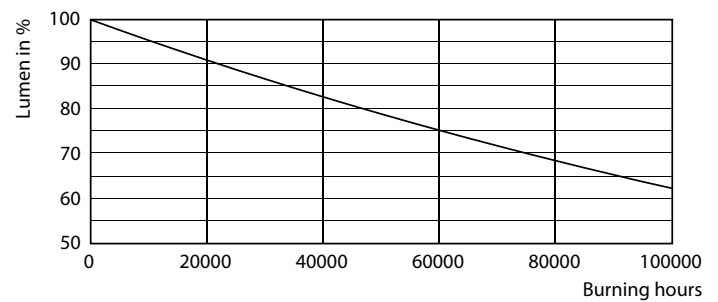


Light Distribution Diagram - MAS LEDtube 600mm HO 7.6W840 T8

Lifetime



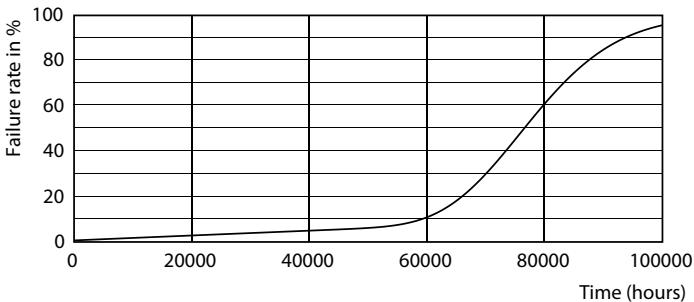
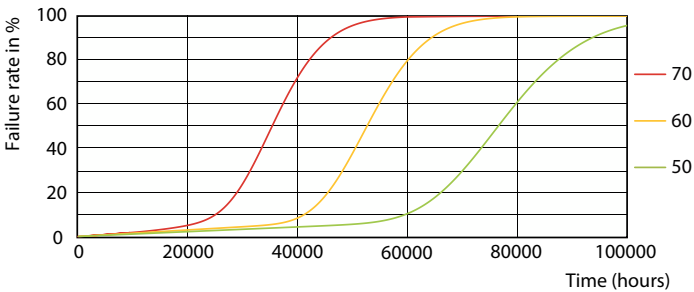
Lumen Maintenance Diagram - MAS LEDtube 600mm HO 7.6W840 T8



Lumen Maintenance Diagram - MAS LEDtube 600mm HO 7.6W840 T8

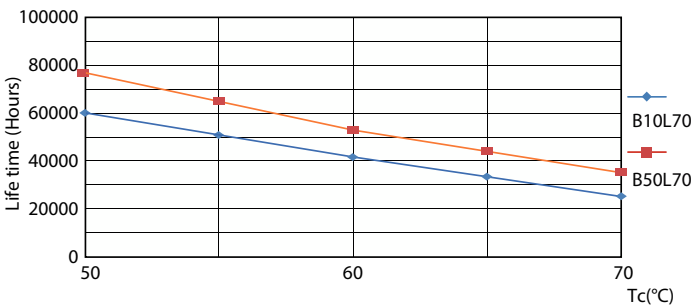
MASTER LEDtube EM/Mains T8

Lifetime



LEDtube-75K-5070-FailureRate-LED

Life Expectancy Diagram



LifetimeVsTc

