




Fixing ring

Packs of 20 pcs.

	Article	Description
	VE GF121A	Technopolymer fixing ring
	VE GF720A	Metal fixing ring

Fixing key

	Article	Description
	VE CH121A1	Technopolymer fixing key for VE GF•••• fixing rings

Ø 22 ... Ø 30 mm adapter

Packs of 10 pcs.

Article	Description
VE GF151A	Adapter with ring for panel fixing for Ø 22 devices on Ø 30 holes compliant with EN 60947-5-1

Technical data:
 Body and ring material: technopolymer
 Protection degree: IP67 and IP69K
 Tightening torque: 2 ... 2.5 Nm
 Dowel can be removed with a simple screwdriver

Not applicable on E2 •PD•••••••• - E2 •PT•••••••• - E2 •PQ•••••••• double, triple, and quadruple buttons. Not applicable in presence of shaped rings, label holders, guards or protection caps. It does not alter the IP protection degree of the associated device.

Mounting adapter

Packs of 10 pcs.

Article	Description
E2 1BAC11	3-slot mounting adapter for E2 CP contact blocks and E2 LP LED units
E2 1BAC12	3-slot mounting adapter, oriented, for E2 CP contact blocks and E2 LP LED units
E2 1BAC21	4-slot mounting adapter for E2 CP contact blocks
E2 1BAC22	4-slot mounting adapter, oriented, for E2 CP contact blocks

Not combinable with E2 •PQ•••••••• quadruple buttons and E2 •MA•••••••• joysticks.

Combinable only with selectors E2 •SE••••••••, key selector switches E2 •SC••••••••, buttons E2 •PU••••••••, double buttons E2 •PD••••••••, emergency stop buttons E2 •PE••••••••, configured in the appropriate versions for 4-slot adapter.
 Combinable with E2 •PQ••••~ quadruple buttons and E2 •MA••••~ joysticks.

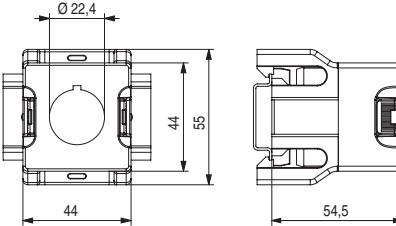
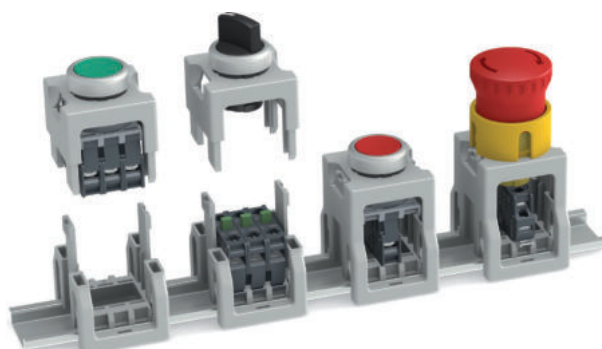
Adapter for DIN rail

Packs of 10 pcs.

Article	Description
VE AD3PF9A0	Support with Ø22 hole for fixing on DIN rail of the signalling and control devices of the EROUND line

Patent pending

Not suitable for joysticks and quadruple buttons.

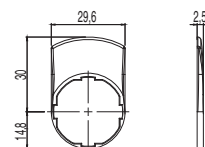



All values in the drawings are in mm

Labels with laser engraving



Labels for single EROUND line devices, adjustable by 90° in 90° increments. Available in black, grey, and yellow; the engraving is via laser, directly on the label itself. This avoids having to apply additional labels, and the command description remains permanent and indelible, for the entire lifetime of the label. Labels are customisable with various laser engraving types, according to customer requirements.



Article	Description	Pieces/Pack
VE TF32H9700	Grey label, without engraving	10
VE TF12H1700	Black label, without engraving	10
VE TF32H5700	Yellow label, without engraving	10
VE TF32H91●●	Grey label, with indelible laser engraving	1
VE TF12H12●●	Black label, with indelible laser engraving	1
VE TF32H51●●	Yellow label, with indelible laser engraving	1

It does not alter the IP protection degree of the associated device.

Not applicable on E2 •PD●●●●●●, E2 •PT●●●●●●, E2 •PQ●●●●●● double, triple, and quadruple buttons.

For ordering engraved labels:

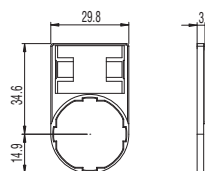
Replace the dots ●● in the article codes with the engraving code reported on the table at page 165.

Example: Black label with "STOP" engraving. VE TF12H12●● → VE TF12H12GB0

Label holders



Label holders for single device, adjustable by 90° in 90° increments. The switch labels of other manufacturers can be used (for example: 3M article KE-7270-2691-3 or GRAFOPLAST article SITM612X) as long as they have the following dimensions: base 27 +0/-0.4 mm, height 18+0/-0.4 mm, thickness 0.8 ±0.4 mm.



Article	Description	Pieces/Pack
VE PT32A00A0	Label holder provided with shaped hole, for 18x27 mm label, without label	10
VE PT32A10A0	Label holder provided with shaped hole, for 18x27 mm label, and transparent protection label without engraving	10
VE PT32A09A●●●	Label holder provided with shaped hole, for 18x27 mm label, and glossy aluminium-coloured label with black engraving	1

It does not alter the IP protection degree of the associated device.

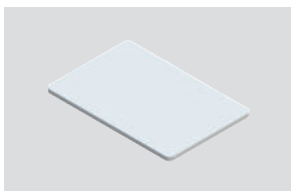
Not applicable on E2 •PD●●●●●●, E2 •PT●●●●●●, E2 •PQ●●●●●● double, triple, and quadruple buttons. Not applicable in presence of shaped rings, adapters from Ø 22 to Ø 30 mm, guards or protection caps.

For ordering engraved labels:

Replace the dots ●● in the article codes with the engraving code reported on the table at page 165.

Example: Label holder provided with label, "STOP" engraving. VE PT32A09A●●● → VE PT32A09AGB0

Labels



Article	Description
VE TR3A770	Protective label for VE PT label holders without engraving. Packs of 100 pcs.

Rectangular label 18x27 mm, thickness 0.4 mm, transparent anti-glare polycarbonate. Ideal for protecting the label below



Article	Description
VE TR4A970	Label for VE PT label holders without engraving, for cutter or laser engraving. Packs of 100 pcs.
VE TR4A91●●●	Label for VE PT label holders with black indelible laser engraving.

Rectangular label 18x27 mm, thickness 0,8 mm, white aluminium RAL 9006

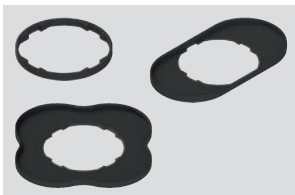
For ordering engraved labels:

Replace the dots ●● in the article codes with the engraving code reported on the table at page 165.

Example: Label with "STOP" engraving. VE TR4A91●●● → VE TR4A91GB0

All values in the drawings are in mm

Shaped ring



Article	Description	Pieces/Pack
VE GP12H1A	Shaped ring for single device	50
VE GP12L1A	Shaped ring for E2 •PD•••••• - E2 •PT•••••• double and triple button	50
VE GP12M1A	Shaped ring for quadruple button E2 •PQ••••••	10

Not applicable in presence of label holders, adapters from Ø 22 to Ø 30 mm, guards or protection caps.
It does not alter the IP protection degree of the associated device.

Protection cap

Packs of **10 pcs.****Technical data:**

Material: silicon suitable for contact with food
 Protection degree: IP67
 Ambient temperature: -40°C ... +80°C
 Ideal for dusty food environments or in presence of water and sand.

Article	Description
VE CA1A1	Protective cap for single flush button (panel width from 1 to 5 mm)
VE CA1B1	Protection cap for single projecting button (panel width from 1 to 5 mm)
VE CA1C1	Protection cap for double and triple projecting buttons (panel width from 1 to 6 mm)
VE CA1D1	Protection cap for double flush button (panel width from 1 to 6 mm)

Not applicable in presence of shaped rings, label holders, adapters from Ø 22 to Ø 30 mm or protection guards.

Connection block

Packs of **10 pcs.**

Connection blocks without electrical contacts and dimensions identical to those of the contact blocks.
 If combined with the VE DL series luminous disc it can be mounted without using terminals or crimping.

Article	Description
VE BC2PV1	Panel mounting connection block
VE BC2FV1	Connection block for base mounting

Diode unit

Packs of **10 pcs.**

Diode blocks of the same size as contact blocks, containing a 3 A 1800 V diode inside.
 To be used in sections of circuits where it is necessary to ensure that the direction of current flow respects the prescribed polarity.

Article	Description
VE BD1PV1	Diode unit, with panel mounting and screw connections
VE BD1PM1	Diode unit, with panel mounting and PUSH-IN spring connections
VE BD1FV1	Diode unit, with base mounting and screw connections
VE BD1FM1	Diode unit, with base mounting and PUSH-IN spring connections

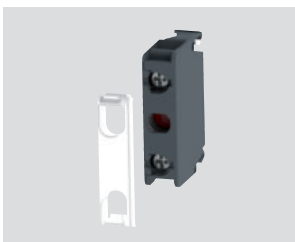
Closing cap

Packs of **10 pcs.****Technical data:**

Body and ring material: technopolymer
 Protection degree: IP67 and IP69K
 Tightening torque: 2 ... 2.5 Nm

Article	Description
E2 1TA1A110	Black closing cap for Ø 22 mm holes

Dust protection

Packs of **50 pcs.**

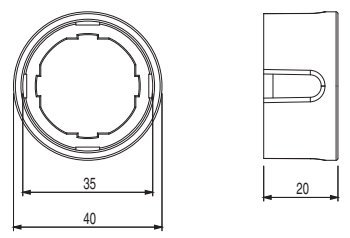
Article	Description
VE PR3A70	Transparent dust protection for E2 series contact blocks. Suitable for all panel mounting contact blocks.

All values in the drawings are in mm





Windowed protection guard

Article	Description
VE GP32A5A	Cylindrical yellow protection guard with 4 windows

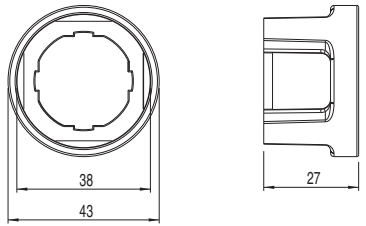
It does not alter the IP protection degree of the associated device.
 Not applicable in presence of shaped rings, label holders, adapters from Ø 22 to Ø 30 mm or protection caps.



Cylindrical protection guard

Article	Description	Colour
VE GP32B5A	Cylindrical yellow protection guard	
VE GP32B1A	Cylindrical black protection guard	
VE GP32B4A	Cylindrical green protection guard	
VE GP32B6A	Cylindrical blue protection guard	

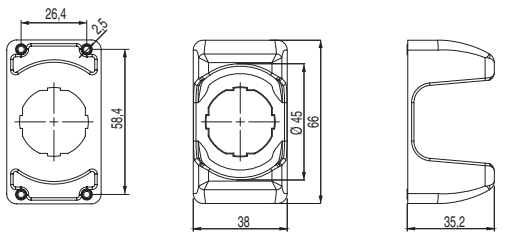
It does not alter the IP protection degree of the associated device.
 Not applicable on emergency stop buttons of the E2 •PE••••• series.
 Not applicable in presence of shaped rings, label holders, adapters from Ø 22 to Ø 30 mm or protection caps.



Open protection guard

Article	Description
VE GP32F5A	Rectangular open yellow protection guard complete with 4 screws (for panels of thickness from 1 to 3.5 mm)

It does not alter the IP protection degree of the associated device.
 Not applicable in presence of shaped rings, label holders, adapters from Ø 22 to Ø 30 mm or protection caps.

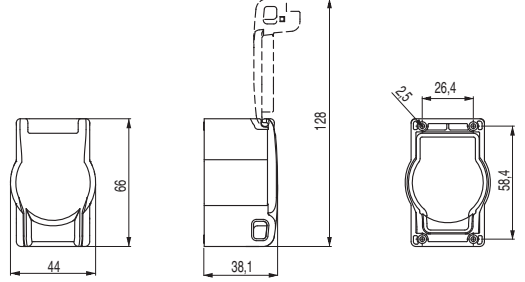


Lockable guard

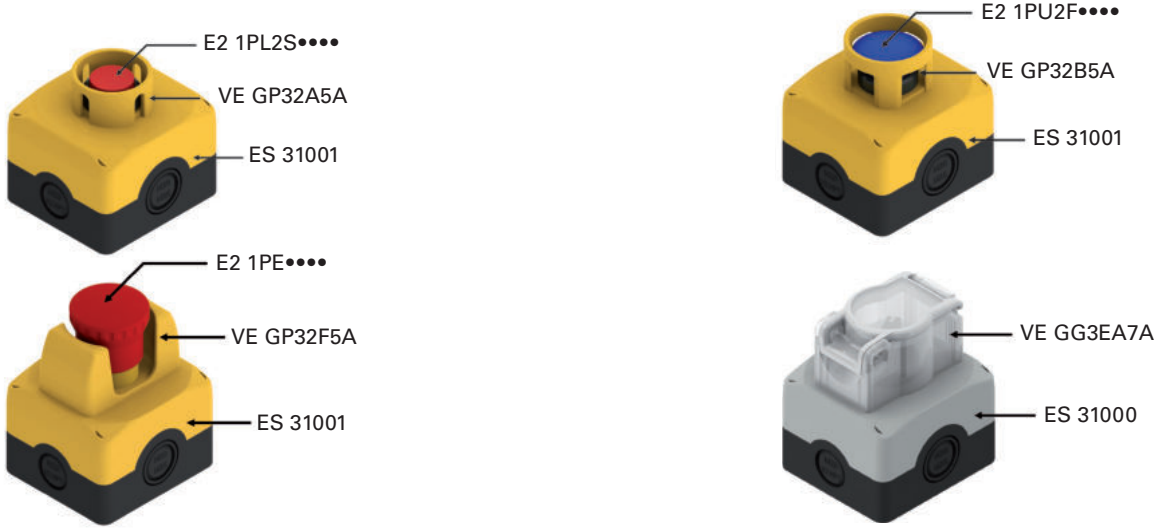
Article	Description
VE GG3EA7A	Lockable guard complete with 4 screws (for panel thicknesses between 1 and 3.5 mm)

Ideal for protecting devices which must not be actuated involuntarily.

It does not alter the IP protection degree of the associated device.
 Not applicable with attached label holder.



Application examples of guards


















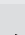

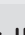


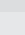
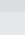
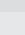
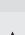
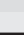
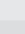
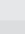
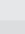
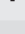
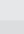


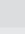
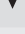
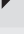


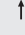

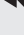





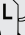
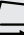

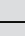



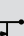
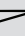
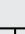




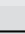
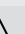
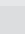
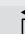
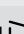
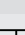
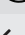
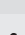
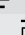
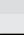

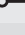
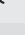
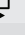
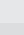
All values in the drawings are in mm



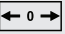
List of available engravings

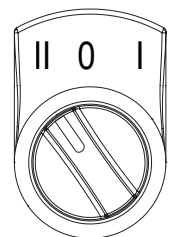
Code	Symbol	Code	Symbol	Code	Symbol	Code	Symbol	Code	Symbol	Code	Symbol
L1		L42		L27		L330		L187		L386	
L287		L43		L147		L455		L230		L395	
L413		L213		L148		L456		L249		L411	
L2		L254		L162		L369		L376		L414	
L3		L17		L172		L426		L102		L415	
L4		L44		L220		L59		L103		L418	
L35		L45		L277		L64		L139		L419	
L36		L46		L226		L62		L140		L420	
L37		L60		L142		L63		L141		L80	
L11		L191		L54		L86		L157		L374	
L12		L193		L56		L88		L381		L476	
L412		L308		L57		L89		L445		L472	
L188		L61		L55		L87		L278		L473	
L14		L153		L146		L76		L323		L474	
L32		L194		L293		L77		L362		L475	
L33		L309		L304		L78		L380			
L34		L408		L305		L190		L382			
L240		L145		L470		L416		L383			
L16		L336		L317		L417		L384			
L41		L96		L319		L189		L385			

Other engravings on request

Code	Symbol	Code	Symbol	Code	Symbol	Code	Symbol	Code	Symbol	Code	Symbol
L7		L25		L84		L174		L316		L441	
L8		L30		L90		L175		L394		L295	
L9		L31		L91		L176		L399			
L10		L58		L312		L294		L436			
L18		L75		L311		L313		L437			
L143		L425		L442		L314		L438			
L24		L454		L443		L227		L439			
L310		L83		L170		L228		L440			





L234		L241		L247		L279		L392		L467	
L235		L242		L248		L280		L393		L468	
L236		L243		L251		L375		L463			
L237		L244		L252		L389		L464			
L238		L245		L253		L390		L465			
L239		L246		L260		L391		L466			

L19	0	L185	1 2 3	L155	AUTO 0 MAN.	L359	START AUTO	L232	R 0 F
L20	0	L259	1 2 3 4	L164	AUTO. MAN.	L360	STOP AUTO	L307	FWD 0 REV
L21	0	L452	STOP START	L377	AUTOMATIC 0 1	L163	SLOW FAST	L469	FWD REV
L22	0	L156	↑ ↓	L342	MAN OFF AUTO	L404	 	L144	BARRIER BY-PASS & RESET 0 1
L219	o -	L262		L266	AUTO-0-MAIN	L171	HIGH LOW	L217	CLOSE OPEN



Example of 3-position selector with VE TF••H•••• label and L21 engraving.

Other engravings on request

Code	Symbol	Code	Symbol	Code	Symbol	Code	Symbol	Code	Symbol	Code	Symbol
L28	STOP	L67	3	L39		L289	BOOST	L208		L135	AVANTI - INDIETRO
L50	STOP	L68	4	L114	RESET	L292	MONO / TRI	L117	POMPA FILTRO 0-1	L104	24V 电源指示 24V Power
L48	STOP	L69	5	L306	RESET	L327	ENABLE DISABLE	L118	FILTER PUMP 0-1	L105	220V 电源指示 220V Power
L49	STOP	L70	6	L130	100%	L222	ACCESS DENIED	L119	RISCALDAMENTO 0-1	L106	选择开关 Selector
L113	STOP	L71	7	L315	24V=	L223	ACCESS ALLOWED	L120	HEATING 0-1	L107	启动按钮 START
L29	START	L72	8	L82	EROUND	L224	ACCESS REQUEST	L121	SCATTO TERMICO	L108	停止按钮 STOP
L53	START	L73	9	L199	SPEED	L225	ACCESS RESET	L122	CIRCUIT BREAKER	L109	电源指示 Power
L51	START	L74	0	L233	CAUTION	L215	INIT	L123	MAN. - AUT.	L110	合闸指示 Ready
L52	START	L450	-1	L250	POWER	L216	C / C	L124	START CICLO	L111	故障指示 Stoppage
L218	START	L451	-2	L332	ALLOW IN	L370	UNLOCK DOOR	L125	RADDRIZZATORE 0-1		
L276	START STOP	L129	3/4	L334	SYSTEM START	L371	REQUEST / RESET ACCESS TO AREA	L126	STOP CICLO		
L410	PAUSE (START)	L15	R	L335	SYSTEM STOP	L205	Y+	L127	BY-PASS EMERGENZE 0-1		
L65	1	L40	R	L333	CYCLE STOP	L206		L131	AZIONAMENTO 0-1		
L66	2	L38	R	L281	DEFAULT	L207		L132	TACITAZIONE SIRENA		

Other engravings on request

List of available engravings – TEXTS

Code	Text	Code	Text	Code	Text	Code	Text
IT0	ARRESTO	GB0	STOP	FR0	ARRÊT	DE0	HALT
IT1	AVVIO	GB1	START	FR1	MARCHE	DE1	START
IT2	CHIUSO	GB2	CLOSE	FR2	FERMÉ	DE2	ZU
IT3	SU	GB3	UP	FR3	MONTÉE	DE3	AUF
IT4	GIÚ	GB4	DOWN	FR4	DESCENTE	DE4	AB
IT5	SPENTO	GB5	OFF	FR5	ARRÊT	DE5	AUS
IT6	ACCESO	GB6	ON	FR6	MARCHE	DE6	EIN
IT7	IN SERVIZIO	GB7	RUN	FR7	EN SERVICE	DE7	BETRIEB
IT8	ERRORE	GB8	FAULT	FR8	PANNE	DE8	STÖRUNG
IT9	TEST	GB9	TEST	FR9	ESSAI	DE9	PRÜFUNG
IT10	SPENTO ACCESO	GB10	OFF ON	FR10	ARRÊT MARCHE	DE10	AUS EIN
IT11	MAN. AUTO	GB11	MAN. AUTO	FR11	MAN. AUTO	DE11	HAND AUTO
IT12	MAN. 0 AUTO	GB12	MAN. 0 AUTO	FR12	MAN. 0 AUTO	DE12	HAND 0 AUTO
IT13	MARCIA	GB13	DRIVE	FR13	MARCHE	DE13	ANTRIEB
IT14	RIAVVIA	GB14	RESET	FR14	REARM.	DE14	ENTSPERREN
IT15	AVANTI	GB15	FORWARD	FR15	AVANT	DE15	VORWÄRTS
IT16	INDIETRO	GB16	REVERSE	FR16	ARRIÈRE	DE16	RÜCKWÄRTS
IT17	AUMENTA	GB17	RAISE	FR17	MONTER	DE17	HEBEN
IT18	DIMINUISCI	GB18	LOWER	FR18	DESCENDRE	DE18	SENKEN
IT19	SINISTRA	GB19	LEFT	FR19	GAUCHE	DE19	LINKS
IT20	DESTRA	GB20	RIGHT	FR20	DROITE	DE20	RECHTS
IT21	FRENO	GB21	BRAKE	FR21	FERMER/OUVRIR	DE21	BREMSEN
IT22	ALTO	GB22	HIGH	FR22	HAUT	DE22	HOCH
IT23	BASSO	GB23	LOW	FR23	BAS	DE23	NIEDRIG
IT24	VELOCE	GB24	FAST	FR24	RAPIDE	DE24	SCHNELL
IT25	LENTO	GB25	SLOW	FR25	LENT	DE25	LANGSAM
IT26	PIÚ VELOCE	GB26	FASTER	FR26	PLUS RAPIDE	DE26	SCHNELLER
IT27	PIÚ LENTO	GB27	SLOWER	FR27	PLUS LENT	DE27	LANGSAMER
IT32	APRIRE	GB32	OPEN	FR32	OUVRIR	DE32	ÖFFNEN
IT63	CHIAMATA	GB63	CALL	FR63	APPEL	DE63	ANRUF
IT64	OCCUPATO	GB64	OCCUPIED	FR64	OCCUPÉ	DE64	BESETZT
IT99	ARRESTO D'EMERGENZA	GB99	EMERGENCY STOP	FR99	ARRÊT D'URGENCE	DE99	NOT-AUS

Other engravings on request