

44424014	DATA SHEET	
Valid from: 17.09.2018	EPIC® MODULAR 3.6 MACHINED CONTACTS 16mm²	

Description

- For inserts and modules of the EPIC® rectangular connectors



Technical Data

Contact resistance :	< 1 mOhm
Contacts:	Copper alloy, hard silver-plated
Cycle of mechanical operation:	500

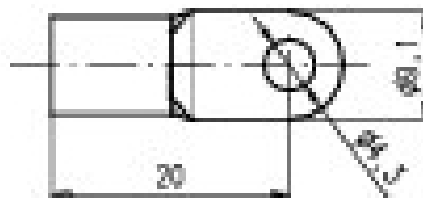
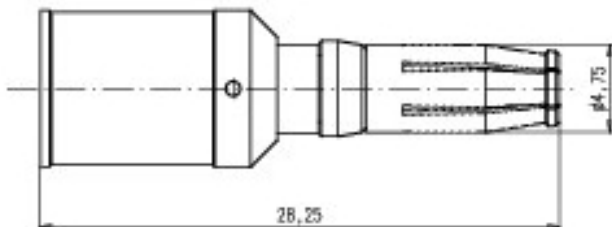
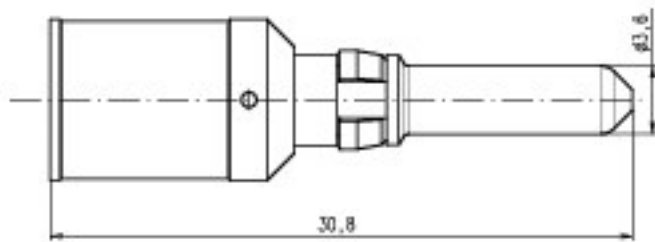
Article-Number	Article	Inserts	Version	Cross-section(mm ²)	Surface
Contacts					
44424014	EPIC® Modular SCEM AG	Crimping contacts for	male	16	Ag
44424015	EPIC® Modular BCEM AG	Crimping contacts for	female	16	Ag
Ring lug for Protection earth					
44424029	EPIC® KB 16-4R	Ring cable lug to connect a 16mm ² protective wire	Ringlug	16	
Crimping die for contacts of HC2 modules					
44424016	EPIC® TOOL DIE D=3.6/16 mm ²	Crimping dies		16	

Remark

Photographs are not to scale and do not represent detailed images of the respective products.

Creator: MANA2/PDP Released: IVSE1/PDP	Document: DB44424014EN Version: 01	Page 1 of 2
---	---------------------------------------	-------------

44424014	DATA SHEET	
Valid from: 17.09.2018	EPIC® MODULAR 3.6 MACHINED CONTACTS 16mm²	



Creator: MANA2/PDP Released: IVSE1/PDP	Document: DB44424014EN Version: 01	Page 2 of 2
---	---------------------------------------	-------------