

Axyl Opera

THORN

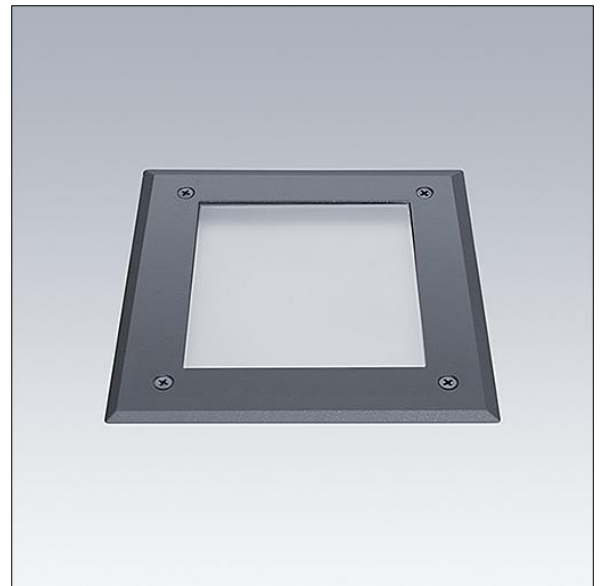
96700873 AXYL OPERA L WO 24L 930 WB HFX ANT

LED 10W AXYL_OP_L_WB930X	IP67	IK09	⚡	CE	
--------------------------	------	------	---	----	--

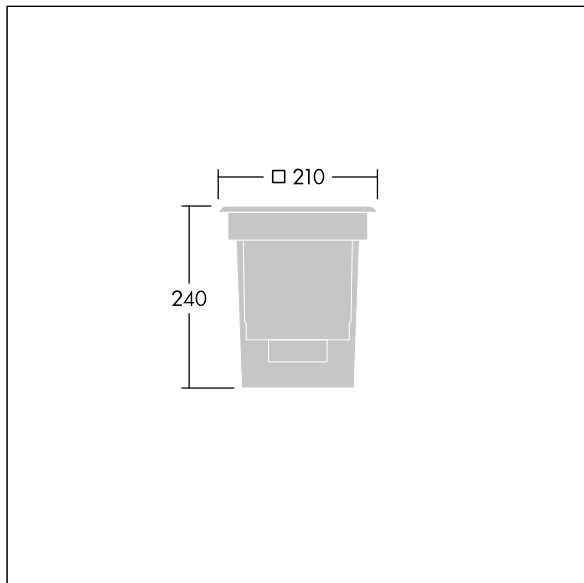
Axyl Opera

AXYL Opera, a floor recessed, architectural LED luminaire for decorative facade lighting, with wide beam distribution. Class I electrical.. DALI-2 dimmable LED driver. , IP67, Impact strength: IK09. Housing: die-cast aluminium, powder coated textured anthracite. Working ambient temperature: -20°C to +45°C. Complete with 3000K LED..

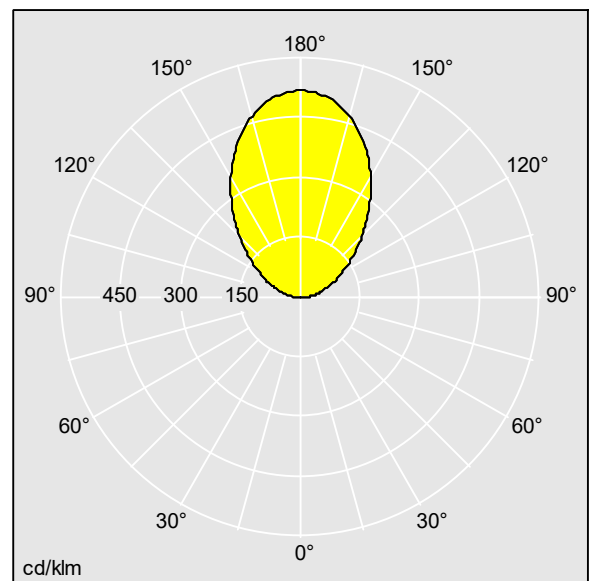
Dimensions: 210 x 210 x 135 mm
Luminaire input power: 9.8 W
Luminaire luminous flux: 92 lm
Luminaire efficacy: 9 lm/W
Weight: 3.54 kg



TLG_AXYL_F_OPERA_L_WO_WB_ANT.jpg



TLG_AXYL_M_OPERA_L.wmf



96700873.idt

Lamp position: STD - standard
Light Source: LED
Luminaire luminous flux*: 92 lm
Luminaire efficacy*: 9 lm/W
Colour Rendering Index min.: 90
Correlated colour temperature*: 3000 Kelvin

Chromaticity tolerance (initial MacAdam): 3
Rated useful life (B10)*:
L80 70000 h at 25 °C
Ballast: 1x LED_DRV
Luminaire input power*: 9.8 W Power factor = 0.93
Dimming: Dali2Dim
LOR: 1,00 ULOR: 1,00 DLOR: 0,00

This product contains a light source of energy efficiency class E.

All values marked with an * are rated values. Thorn uses tried and tested components from leading suppliers, however there may be isolated instances of technology-related failures of individual LEDs during the rated product lifetime. International standards set the tolerance in initial flux and connected load at $\pm 10\%$. Unless stated otherwise, the values apply to an ambient temperature of 25°C.

Thorn Lighting is constantly developing and improving its products. The right is reserved to change specifications without prior notification or public announcement.
© Thorn Lighting