

Sounder CWSO-RR- W1-E010 with Deep Base IP65

Instruction Sheet
R10032GB0



Contents

1	Sounder CWSO-RR-S1-E010 overview	4
1.1	Volume settings.....	4
1.2	Tone settings.....	4
1.3	Base IP rating.....	4
2	Dimensions and installation	5
2.1	Product codes	6
3	Tone Table	7

Schneider Electric Fire & Security Oy

Sokerilinnantie 11 C
FI-02600 Espoo, Finland
Tel: +358 10 446 511
Website: www.schneider-electric.com
Document number: R10032GB0
Published: 08.03.2019

© 2018 – Schneider Electric. All Rights Reserved. This information is only to be used as guidance. Subject to changes and errors.

1 Sounder CWSO-RR-S1-E010 overview

The CW range of conventional alarm devices are used in Esmi Sense FDP and FX 3NET fire detection applications.

The sounder products are approved to EN54-3 and beacon products to EN54-23. The products are easy to install without need for device orientation. They are suitable for wall and ceiling mount applications in indoor and outdoor use. All 32 selectable tones are approved to EN54-3.

1.1 Volume settings

Volume setting is adjusted by switch 6 on the 6-way DIP switch on the bottom of product (See switch diagram).

1.2 Tone settings

The tone setting is selected by switches 1 to 5 on the 6-way DIP-switch. The switch diagram and tone table are overleaf. The second stage tone is related to the first stage tone selection made via the DIP-switch. The second stage is controlled by the fire panel and becomes active through the wiring configuration.

1.3 Base IP rating

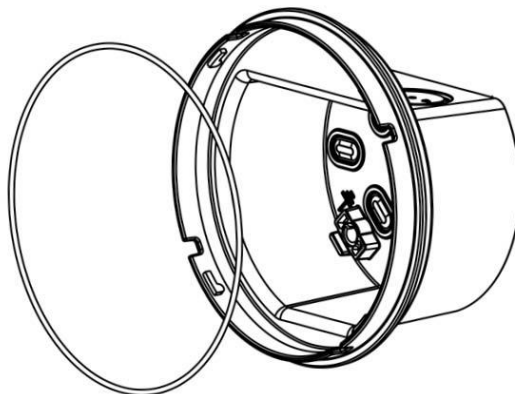
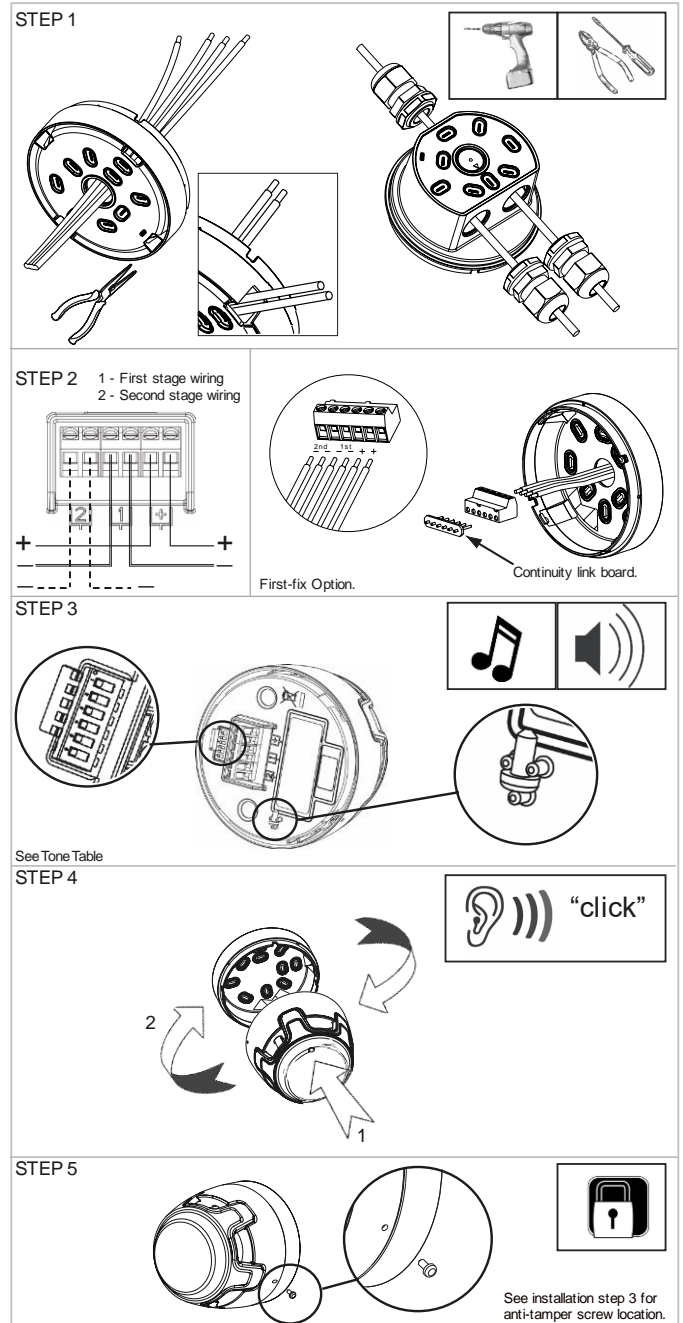
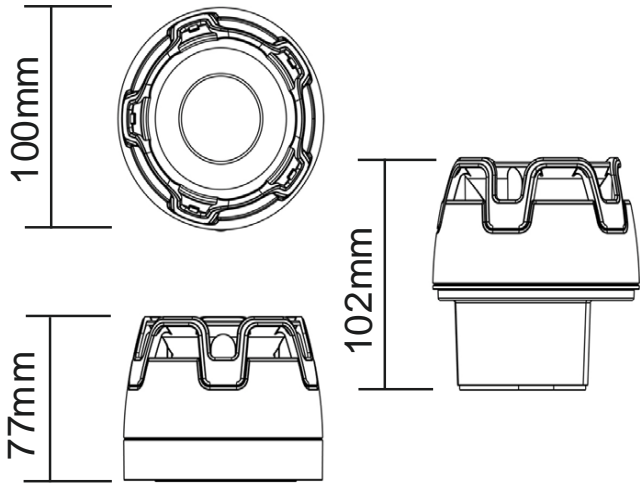


Figure 1 Deep Base (IP65)

If the Deep Base IP65 option is used, the o-ring seal must be fitted to base as shown. If required, the deep base gasket accessory can be installed between the base and mounting surface.

2 Dimensions and installation

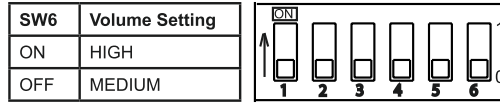


2.1 Product codes

Product	IP Rating	Product code
CWSO-RR-S1-E010	IP21	FFS06711058
CWSO-RR-W1-E010	IP65	FFS06711059
CWSS-RW-S5-E010	IP21	FFS06711062
CWSS-RW-W5-E010	IP65	FFS06711063
CWST-RW-S5-E010	IP21	FFS06711060
CWST-RW-W5-E010	IP65	FFS06711061
CWSS-RR-S5-E010	IP21	FFS06425172
CWSS-RR-W5-E010	IP65	FFS06425173
CWST-RR-S5-E010	IP21	FFS06425170
CWST-RR-W5-E010	IP65	FFS06425171

Base	IP Rating	Product code
CSR-E010 Low Profile Base (Red)	IP21C	FFS06711066
CWR-E010 Deep Base (Red)	IP65	FFS06711067

3 Tone Table



Dip Switch	Tone Nos.	Pattern	Nominal Freq	Typical consumption (mA)				2nd Stage Tone
				24V High		24V Med		
				dB	mA	dB	mA	
0,0,0,0,0	1	Alternating	554/440	99.7	29.44	96.7	10.47	7
1,0,0,0,0	2	Alternating	800/970	102.2	24.34	92.9	8.53	8
0,1,0,0,0	3	Alternating	800/970	102.5	24.41	93.1	8.55	8
1,1,0,0,0	4	Alternating	2400/2900	107.7	35.3	101	16.76	10
0,0,1,0,0	5	Alternating	2500/3100	107.2	37.98	100.2	18.7	10
1,0,1,0,0	6	Alternating	988/645	102.7	21.2	99.6	11.18	8
0,1,1,0,0	7	Continuous	660	103	20.61	99.8	12.84	1
1,1,1,0,0	8	Continuous	970	102.8	25.44	93.5	8.91	2
0,0,0,1,0	9	Continuous	1200	104.5	28.73	103.5	23.42	2
1,0,0,1,0	10	Continuous	2850	106.6	36.24	101.2	18.47	4
0,1,0,1,0	11	Bell	2400	106.7	37.12	99.7	17.24	16
1,1,0,1,0	12	Intermittent	420	98.9	17.43	95.6	7.52	13
0,0,1,1,0	13	Sweep	500-1200	103.8	32.81	103.1	23.26	12
1,0,1,1,0	14	Intermittent	660	101.3	12.11	98.4	8.5	7
0,1,1,1,0	15	Intermittent	970	102	8.51	92.6	5.18	8
1,1,1,1,0	16	Intermittent	970	102.4	12.67	93.4	6.94	8
0,0,0,0,1	17	Intermittent	2850	106.7	21.59	101.2	11.38	10
1,0,0,0,1	18	Intermittent	970	102.4	14.68	93.2	6.25	8
0,1,0,0,1	19	Intermittent	950	101.4	11.84	93.6	6.16	12
1,1,0,0,1	20	Continuous	800	102.6	23.61	92.8	8.5	22
0,0,1,0,1	21	Sweep	400-1200	101.7	14.77	101.1	12.18	12
1,0,1,0,1	22	Sweep	1200 - 500	102.1	36.19	101.6	28.35	20
0,1,1,0,1	23	Sweep	2400 - 2850	107.7	34.67	100.5	14.82	10
1,1,1,0,1	24	Sweep	500 - 1200	103.9	30.12	103.2	23.94	8
0,0,0,1,1	25	Sweep	800 - 970	97.8	22.77	88.4	8.13	8
1,0,0,1,1	26	Sweep	800 - 970	99	23.02	91.4	9.1	8
0,1,0,1,1	27	Sweep	800 - 970	103	23.74	95.8	9.37	8
1,1,0,1,1	28	Sweep	2400 - 2850	99.1	34.73	91.4	14.28	10
0,0,1,1,1	29	Sweep	500 - 1000	100.4	25.96	90.4	7.72	8
1,0,1,1,1	30	Sweep	500-1200-500	104.3	30.74	103.5	25.86	8
0,1,1,1,1	31	Sweep	800 - 1000	101.8	23.82	94.7	10.05	8
1,1,1,1,1	32	Sweep	2400 - 2850	102.2	24.08	95.3	10.19	10