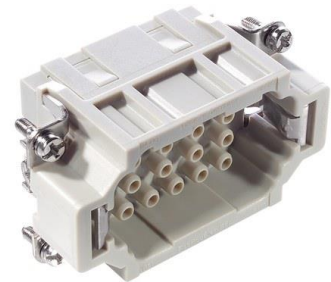


10182400	DATA SHEET	
Valid from: 17.09.2018	EPIC® H-EE 18 SC / H-EE 18 BC	

Description

- H-EE inserts with high contact density based on the proven H-BE series.
- The H-EE inserts with machined contacts for a high number of pins in very tight spaces.
- For assembly in H-B housing



General Characteristics

Series	H-EE 18 machined
Version	Male/Female(Article 10183400)
Number of Contacts	18 + PE
Termination Methods	Crimp termination: 0.5 – 4.0 mm ²
Temperature Range	-40°C to +100°C, short-term up to +125°C

Mechanical Characteristics

Cycle of mechanical operation	100
-------------------------------	-----

Electrical Characteristics

Rated Voltage, IEC	500 V
Rated Voltage, UL	600 V
Rated Voltage, CSA	600 V
Rated Impulse Voltage	6 kV
Rated Current, IEC	16 A
Rated Current, UL	16 A
Rated Current, CSA	16 A
Contact Resistance	< 2 mOhm
Degree of Soiling	3

Materials and Surfaces

Contacts	Copper alloy, hard silver/gold-plated
Insulating Body	PC
Flammability Class according to UL 94	V0

Approvals

UL-Approval, E-File-Number	E75770
----------------------------	--------

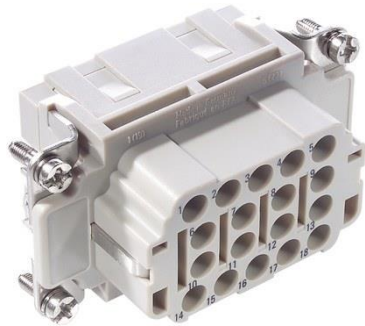
Standard

Safety Standard	IEC 61984, UL 1977
-----------------	--------------------

Creator: MANA2/PDP Released: IVSE1/PDP	Document: DB10182400EN Version: 02	Page 1 of 2
---	---------------------------------------	-------------

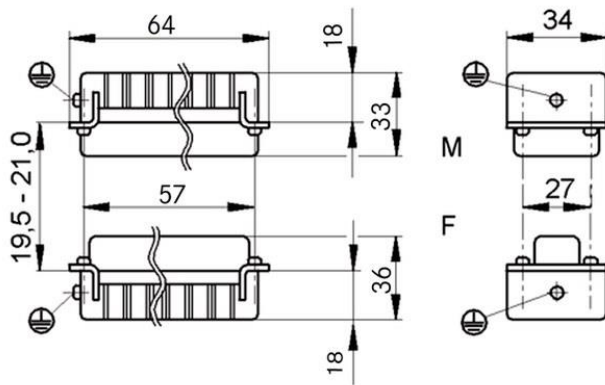
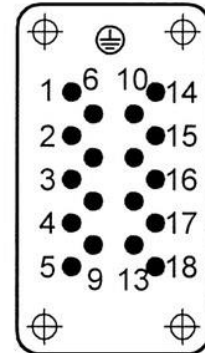
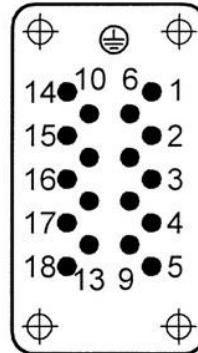
10182400	DATA SHEET	
Valid from: 17.09.2018	EPIC® H-EE 18 SC / H-EE 18 BC	

Technical Drawings



M

F



Industrial machinery and plant engineering



Temperature-resistant

Info

Inserts with high contact density for medium power

Application range

Mechanical engineering
Plant engineering

Remark

Photographs are not to scale and do not represent detailed images of the respective products.

Creator: MANA2/PDP Released: IVSE1/PDP	Document: DB10182400EN Version: 02	Page 2 of 2
---	---------------------------------------	-------------