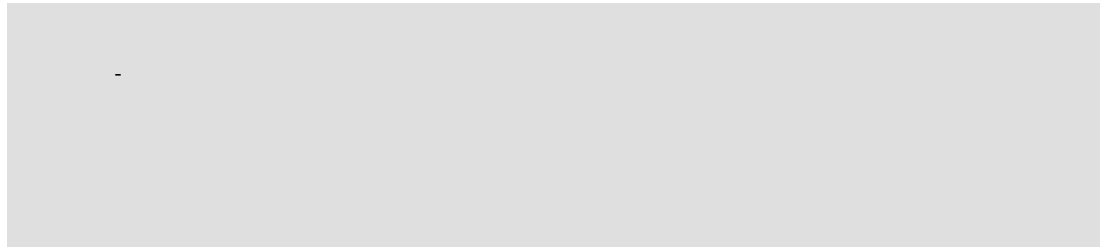


# Product Data Sheet

## GW66683PM

Green Wall range

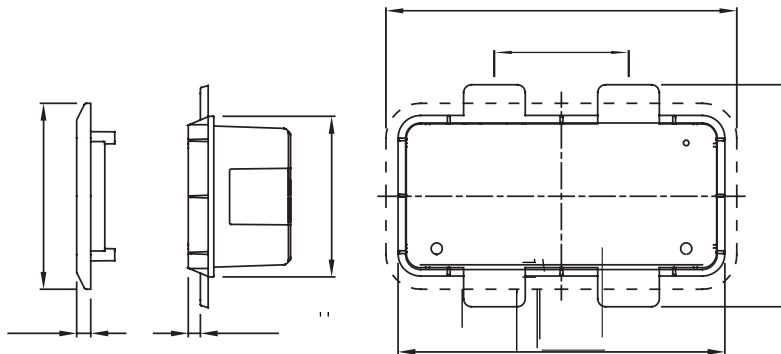


|                                  |                                  |                            |                              |
|----------------------------------|----------------------------------|----------------------------|------------------------------|
| For walls                        | Plasterboard                     | Houseable interloc. socket | 1                            |
| IP degree                        | IP55                             | Mechanical resistance      | IK08                         |
| Houseable IB socket-outlets      | 16/32 A SBF / CBF / Automatika   | Electrocod                 | 2220                         |
| Glow wire test                   | 850 °C (bottom) - 650 °C (frame) | Drilling bottom            | Through multidiameter cutter |
| Minimum installation temperature | -15°C                            |                            |                              |

### DIMENSIONAL

49  
5

5  
32



### TECHNICAL SYMBOLOGY

**IP**

**IK**

**GWT**

IP55

IK08

850 °C (bottom) -  
650 °C (frame)

### STANDARDS/APPROVALS

