



# MASTER - LED HID HPL



## MAS LED HPL M 5.6Klm 33.5W 830 E27 FR G

Philips Master LED HPL lamps offer an easy and short payback LED solution to replace High Intensity Discharge (HID) lamps. The products bring the energy efficiency and long lifetime benefits of LED to HID HPL replacement and provide instant saving and low initial investment. With the right lamp size and light distribution, you can easily retrofit Master LED HPL urban lamps and bypass the existing ballast while enhancing the lighting quality.

### Warnings and Safety

- Please refer to the installation guide or consult a Philips Lighting representative for wiring diagram and instructions.

### Product data

General Information		LLMF At End Of Nominal Lifetime (Nom)	
Cap-Base	E27		70 %
Nominal lifetime	50,000 hour(s)	Photobiological safety according to EN 62471	RG0
Switching Cycle	50,000		
Lighting Technology	LED	Operating and Electrical	
Flux measurement reference	Sphere	Line Frequency	50 to 60 Hz
		Input Frequency	50 to 60 Hz
		Power Consumption	33.5 W
		Lamp Current (Nom)	150 mA
		Starting Time (Nom)	0.5 s
		Warm-up time to 60% light	45 s
		Power Factor (Fraction)	0.9
		Voltage (Nom)	220-240 V
		Ballast Compatibility	Mains
		Inrush current at mains	23.2
		Max. lamp no. on MCB B type 10A - Mains	8
Light Technical			
Color Code	830 [CCT of 3000K]		
Beam Angle (Nom)	300 degree(s)		
Luminous Flux	5,600 lm		
Color Designation	White (WH)		
Correlated Color Temperature (Nom)	3000 K		
Luminous Efficacy (rated) (Nom)	167 lm/W		
Color Consistency	<6		
Color rendering index (CRI)	80		

# MASTER - LED HID HPL

Max. lamp no. on MCB B type 10A – EM ballast without Compensation Capacitor.	-
Max. lamp no. on MCB B type 10A – EM ballast with Compensation Capacitor.	-
Max. lamp no. on MCB B type 16A – Mains	13
Max. lamp no. on MCB B type 16A – EM ballast without Compensation Capacitor.	-
Max. lamp no. on MCB B type 16A – EM ballast with Compensation Capacitor.	-

## Temperature

T-Case Maximum (Nom)	65 °C
----------------------	-------

## Controls and Dimming

Dimmable	No
----------	----

## Mechanical and Housing

Bulb Finish	Frosted
Bulb Material	Glass
Bulb Shape	Tube, single-ended
Net Weight (Piece)	0.200 kg

## Approval and Application

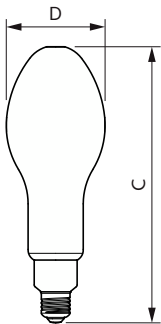
Energy Efficiency Class	C
-------------------------	---

Energy Consumption kWh/1000 h	34 kWh
EPREL Registration Number	1363713
CE mark	Yes
EU RoHS compliant	Yes
Flickering value (PstLM) - Flickering value as per EN 61000-3-3	1
Stroboscopic effect visibility measure (SVM)	1.6
Ambient temperature range	-30 to +45 °C

## Product Data

Order product name	MAS LED HPL M 5.6Klm 33.5W 830 E27 FR G
Full product name	MAS LED HPL M 5.6Klm 33.5W 830 E27 FR G
Full product code	871951445201500
Order code	929003531102
Material Nr. (12NC)	929003531102
Numerator - Quantity Per Pack	1
EAN/UPC - Product/Case	8719514452015
Numerator - Packs per outer box	6
EAN/UPC - Case	8719514452022

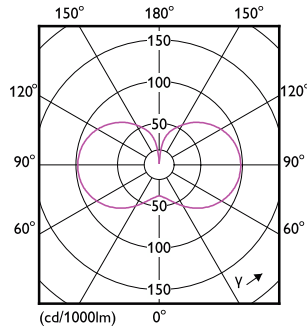
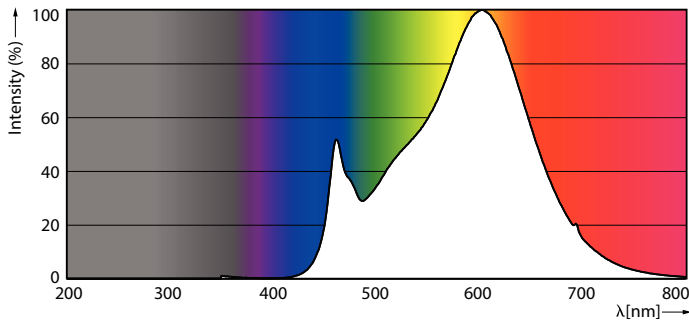
## Dimensional drawing



Product	D	C
MAS LED HPL M 5.6Klm 33.5W 830 E27 FR G	91 mm	249 mm

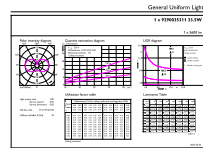
# MASTER - LED HID HPL

## Photometric data



Spectral Power Distribution Colour - MAS LED HPL M 5.6Klm 33.5W 830 E27 FR G

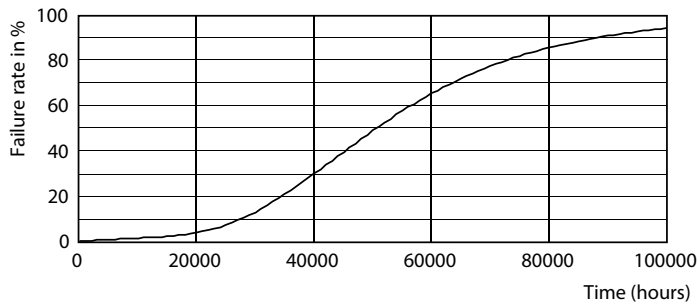
Light Distribution Diagram - MAS LED HPL M 5.6Klm 33.5W 830 E27 FR G



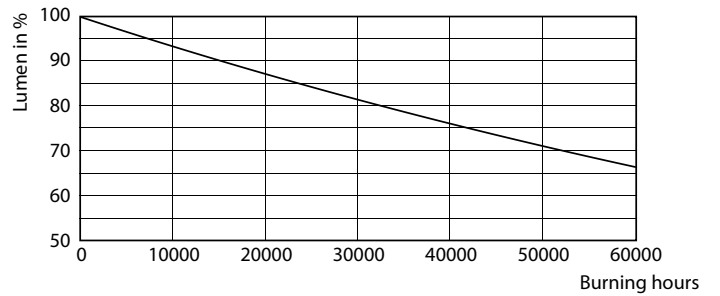
General Uniform Lighting  
© 2025 Philips Lighting B.V. All rights reserved. Page 10

General uniform lighting - MAS LED HPL M 5.6Klm 33.5W 830 E27 FR G

## Lifetime



Life Expectancy Diagram



Lumen Maintenance Diagram - MAS LED HPL M 5.6Klm 33.5W 830 E27 FR G

## MASTER - LED HID HPL

