

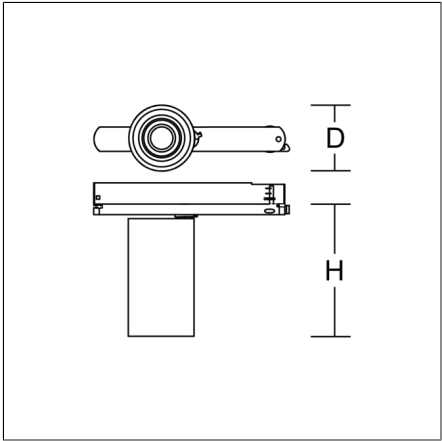
# DEECOS S mini track-in

742257.004.3.76 | Surface mounted projector



Surface mounted projectors  
4051859814191  
D 87, H 135

Track on ceiling, Wall track  
silver



LED surface-mounted projector in modern design with no visible cooling ribs. Housing: die-cast aluminium, powder-coated. Rotation range: 356°. Swivel range: 90°. Black plastic ring and recessed LED to prevent glare from the side. With adapter for RZB 3-circuit DALI tracks. Suitable for Track on ceiling, Wall track. Track-in driver integrated into the adapter. High quality converter without flickering and stroboscopic effect. The following accessories can be mounted without use of tools: interchangeable lenses, decorative glasses, honeycomb louvre, clear and frosted diffusers, white interchangeable plastic ring.

### Product specifications

Diameter D	87 mm
Height H	135 mm
Weight	0.62 kg
Light source	LED
Colour temperature	3500 K
Rated luminous flux	1950 lm
System power	20 W
System efficiency	98 lm/W
Glare evaluation UGR (4H 8H)	20,7
Beam angle	40°/28°
Rated life	50000 h (L90/B10)
Colour rendering index (CRI)	92
Colour tolerance	2
Photobiological safety according to EN 62471	Risk group 1
Driver	Converter, dimmable
Control	DALI
Voltage	220 - 240 V / 50 - 60 Hz
Luminaires on B16A fuse	27
Luminaires on C16A fuse	44
Inrush current / Inrush current duration	18 A / 2 µs
CIE Flux Code / CEN Flux Code	95 100 100 100 100
Type of protection	IP 20
Protection class	II
Filament test	650°C - 30 seconds
Impact resistance	IK06
Ambient temperature	25 °C
Conformity mark	CE, EAC

### Accessories



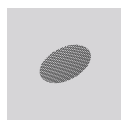
982370.000  
Diffuser, transparent



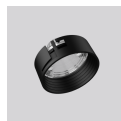
982370.010  
Diffuser, satinated

# DEECOS S mini track-in

742257.004.3.76 | Surface mounted projector



982371.003  
Anti-glare honeycomb louvre



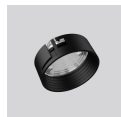
982369.013  
Medium lens



982421.002  
White plastic ring for lens.



982368.013  
Reflector medium



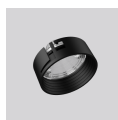
982369.033  
Wide flood lens



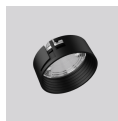
982419.002  
White plastic ring for reflector.



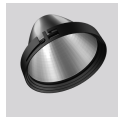
982647.002  
Decorative glass opal matt



982369.003  
Spot lens



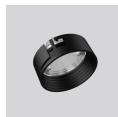
982369.023  
Flood lens



982368.003  
Reflector spot



982368.023  
Reflector flood



982369.043  
Oval corridor lens



982368.033  
Reflector wide flood



982648.002  
Decorative glass opal matt