



CorePro LED PLL



CorePro LED PLL Mains 24W 830 4P

Philips CorePro LED PLL is the ideal uplamping solution for downlights & luminaires in a wide range of general lighting applications. It integrates a LED light source into a traditional fluorescent form factor to offer superb energy savings over a lifetime that's twice as long as fluorescent alternatives.

Product data

General Information		Lamp Current (Nom)	
Cap-Base	2G11		127 mA
Nominal lifetime	30,000 hour(s)	Starting Time (Nom)	0.5 s
Switching Cycle	200,000	Warm-up time to 60% light	0.5 s
Lighting Technology	LED	Power Factor (Fraction)	0.9
Flux measurement reference	Sphere	Voltage (Nom)	220-240 V
		Ballast Compatibility	Mains
		LED alternative to fluorescent lamp power	55 W
		Inrush current at mains	9.6
		Max. lamp no. on MCB B type 10A - Mains	80
		Max. lamp no. on MCB B type 10A – EM ballast without Compensation Capacitor.	80
		Max. lamp no. on MCB B type 10A – EM ballast with Compensation Capacitor.	16
		Max. lamp no. on MCB B type 16A - Mains	128
		Max. lamp no. on MCB B type 16A – EM ballast without Compensation Capacitor.	128
		Max. lamp no. on MCB B type 16A – EM ballast with Compensation Capacitor.	25
Light Technical		Temperature	
Color Code	830 [CCT of 3000K]	T-Case Maximum (Nom)	75 °C
Beam Angle (Nom)	160 degree(s)		
Luminous Flux	3,200 lm		
Color Designation	White (WH)		
Correlated Color Temperature (Nom)	3000 K		
Luminous Efficacy (rated) (Nom)	133 lm/W		
Color Consistency	<6		
Color rendering index (CRI)	80		
LLMF At End Of Nominal Lifetime (Nom)	70 %		
Photobiological safety according to EN 62471	RG0		
Operating and Electrical			
Line Frequency	50 to 60 Hz		
Input Frequency	50 to 60 Hz		
Power Consumption	24 W		

CorePro LED PLL

Controls and Dimming

Dimmable	No
----------	----

Mechanical and Housing

Bulb Finish	Frosted
Bulb Material	Glass
Product Length	528 mm
Bulb Shape	PL-L
Net Weight (Piece)	0.192 kg

Approval and Application

Energy Efficiency Class	E
Energy Saving Product	Yes
Approval Marks	RoHS compliance KEMA Keur certificate
Energy Consumption kWh/1000 h	24 kWh
EPREL Registration Number	1370829
CE mark	Yes
EU RoHS compliant	Yes

Flickering value (PstLM) - Flickering value as per EN 61000-3-3	1
---	---

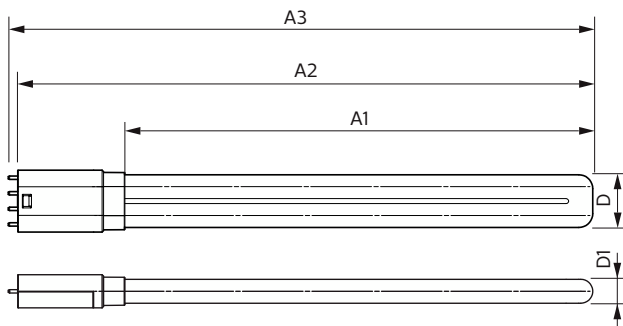
Stroboscopic effect visibility measure (SVM)	0.4
--	-----

Ambient temperature range	-20 °C to 45 °C
---------------------------	-----------------

Product Data

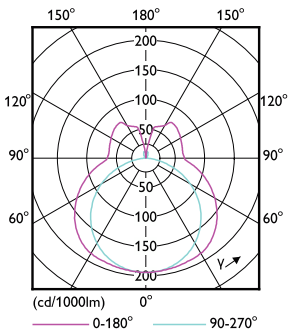
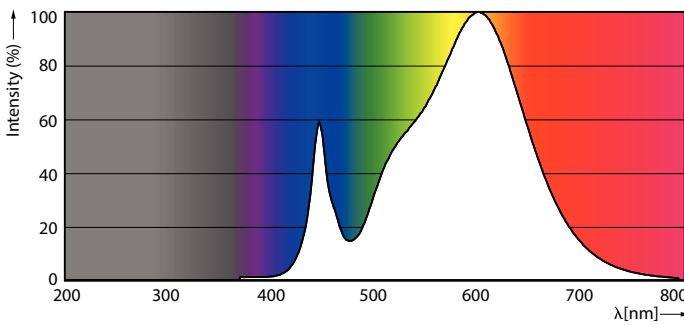
Order product name	CorePro LED PLL Mains 24W 830 4P
Full product name	CorePro LED PLL Mains 24W 830 4P
Full product code	872016915711800
Order code	929003592802
Material Nr. (12NC)	929003592802
Numerator - Quantity Per Pack	1
EAN/UPC - Product/Case	8720169157118
Numerator - Packs per outer box	10
EAN/UPC - Case	8720169157125

Dimensional drawing



Product	D1	D2	A1	A2	A3
CorePro LED PLL Mains 24W 830 4P	17 mm	38 mm	453 mm	528 mm	535 mm

Photometric data

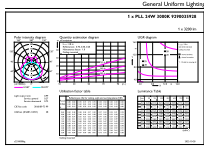


Spectral Power Distribution Colour - CorePro LED PLL Mains 24W 830 4P

Light Distribution Diagram - CorePro LED PLL Mains 24W 830 4P

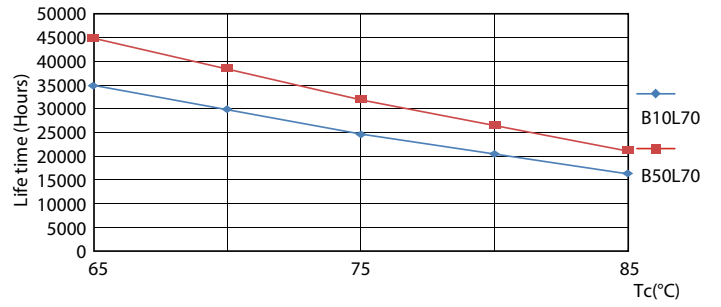
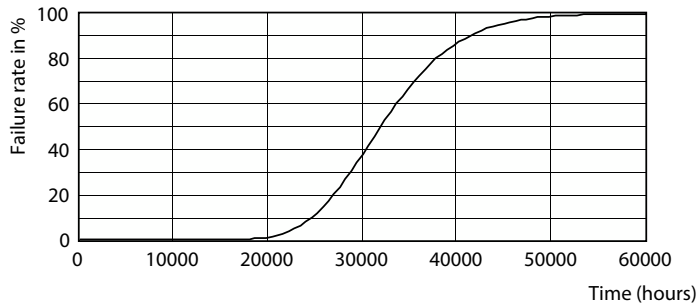
CorePro LED PLL

Photometric data

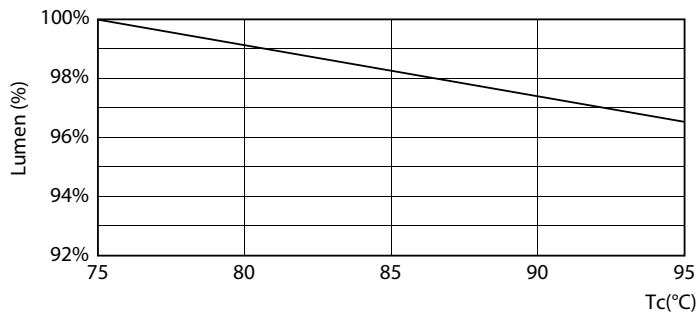


General uniform lighting - CorePro LED PLL Mains 24W 830 4P

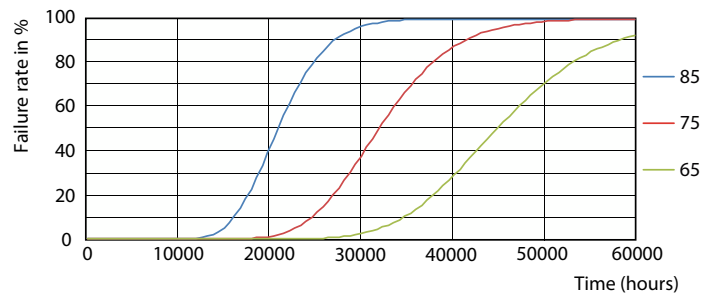
Lifetime



Life Expectancy Diagram



LifetimeVsTc

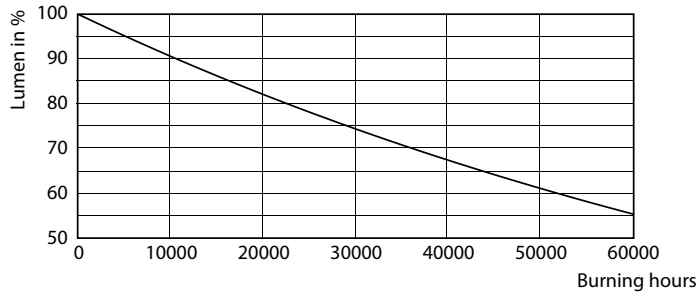


Lumen Maintenance Diagram - CorePro LED PLL Mains 24W 830 4P

FailureRate

CorePro LED PLL

Lifetime



Lumen Maintenance Diagram - CorePro LED PLL Mains 24W 830 4P

