



MASTER LEDtube InstantFit HF T5



MAS LEDtube HF 1500mm HE 20W 830 T5

The Philips MASTER LEDtube integrates a LED light source into a traditional fluorescent form factor. Its unique design creates a perfectly uniform visual appearance, which cannot be distinguished from traditional fluorescent. These T5 lighting tubes are the right choice for absolute performance and are designed to stand up to everyday conditions. Unparalleled savings thanks to low energy consumption and an exceptionally long lifetime make these T5 LED tubes the choice for every demanding application.

Product data

General Information		Photobiological safety according to EN 62471	
Cap-Base	G5	RG0	
Nominal lifetime	60,000 hour(s)		
Switching Cycle	50,000		
Lighting Technology	LED		
Flux measurement reference	Sphere		
Light Technical		Operating and Electrical	
Color Code	830 [CCT of 3000K]	Line Frequency	30K to 100K Hz
Beam Angle (Nom)	200 degree(s)	Input Frequency	30K to 100K Hz
Luminous Flux	2,800 lm	Power Consumption	20 W
Color Designation	White (WH)	Lamp Current (Max)	350 mA
Correlated Color Temperature (Nom)	3000 K	Lamp Current (Min)	150 mA
Luminous Efficacy (rated) (Nom)	140.00 lm/W	Starting Time (Nom)	0.5 s
Color Consistency	<6	Warm-up time to 60% light	0.5 s
Color rendering index (CRI)	80	Power Factor (Fraction)	0.92
LLMF At End Of Nominal Lifetime (Nom)	70 %	Voltage (Nom)	80-130 V
		Ballast Compatibility	HF
		LED alternative to fluorescent lamp power	35 W
		Inrush current at mains	-
		Max. lamp no. on MCB B type 10A - Mains	-
		Max. lamp no. on MCB B type 10A – EM ballast without Compensation Capacitor.	-

MASTER LEDtube InstantFit HF T5

Max. lamp no. on MCB B type 10A – EM ballast with Compensation Capacitor.	-
Max. lamp no. on MCB B type 16A – Mains	-
Max. lamp no. on MCB B type 16A – EM ballast without Compensation Capacitor.	-
Max. lamp no. on MCB B type 16A – EM ballast with Compensation Capacitor.	-

Temperature

T-Case Maximum (Nom)	65 °C
----------------------	-------

Controls and Dimming

Dimmable	Yes - Check ballast compatibility
----------	-----------------------------------

Mechanical and Housing

Bulb Finish	Frosted
Bulb Material	Glass
Product Length	1,500 mm
Bulb Shape	T5
Net Weight (Piece)	0.196 kg

Approval and Application

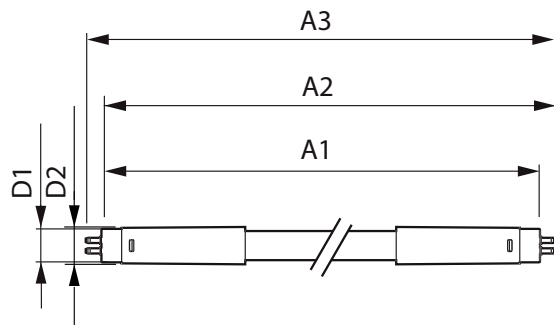
Energy Efficiency Class	E
-------------------------	---

Energy Saving Product	Yes
Approval Marks	RoHS compliance KEMA Keur certificate
Energy Consumption kWh/1000 h	20 kWh
EPREL Registration Number	1384137
CE mark	Yes
EU RoHS compliant	Yes
Ambient temperature range	-20 °C to 45 °C

Product Data

Order product name	MAS LEDtube HF 1500mm HE 20W 830 T5
Full product name	MAS LEDtube HF 1500mm HE 20W 830 T5
Full product code	871869674335500
Order code	929001391302
Material Nr. (12NC)	929001391302
Numerator - Quantity Per Pack	1
EAN/UPC - Product/Case	8718696743355
Numerator - Packs per outer box	10
EAN/UPC - Case	8718696743362

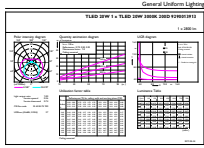
Dimensional drawing



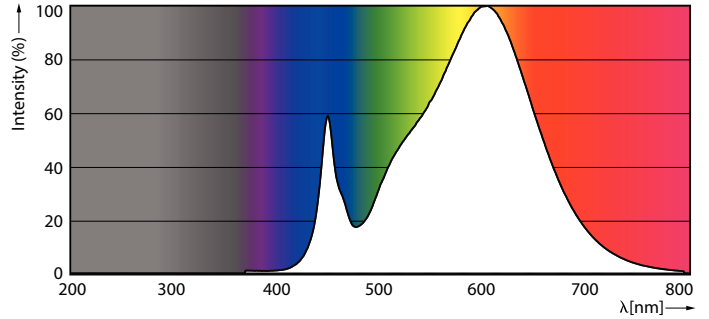
Product	D1	D2	A1	A2	A3
MAS LEDtube HF 1500mm HE 20W 830 T5	15.5 mm	18.8 mm	1,449 mm	1,456.1 mm	1,463.2 mm

MASTER LEDtube InstantFit HF T5

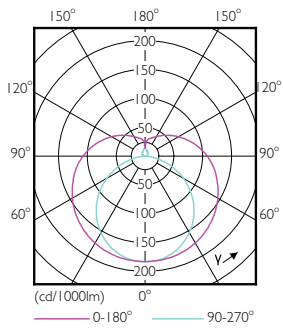
Photometric data



General uniform lighting - MAS LEDtube HF 1500mm HE 20W 830 T5

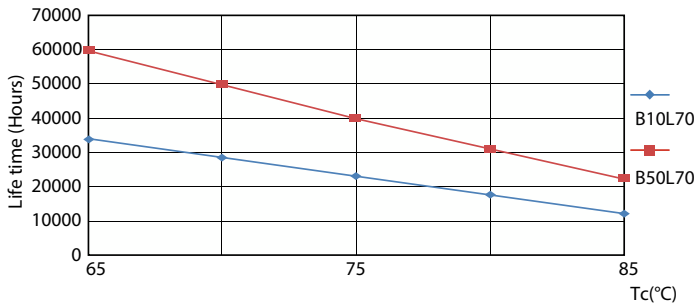


Spectral Power Distribution Colour - MAS LEDtube HF 1500mm HE 20W 830 T5

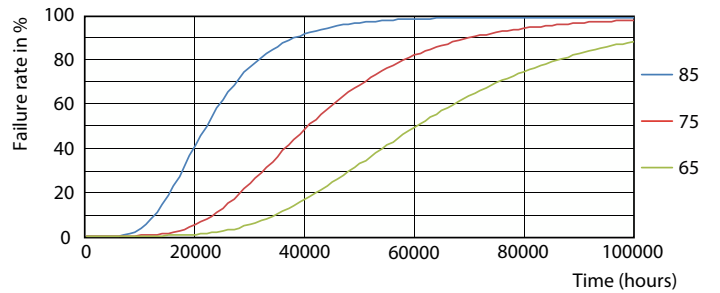


Light Distribution Diagram - MAS LEDtube HF 1500mm HE 20W 830 T5

Lifetime



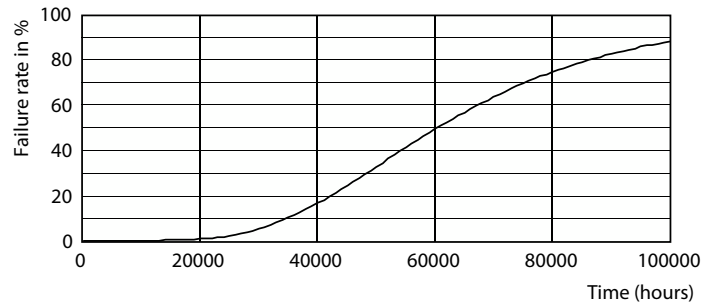
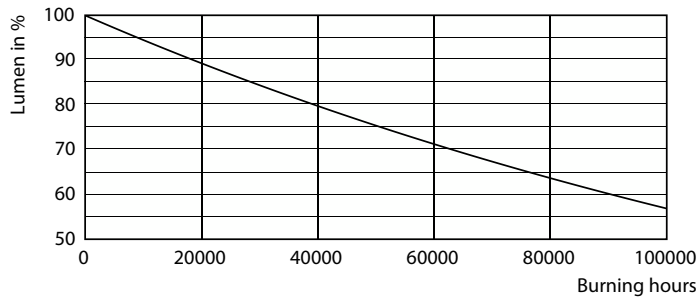
LifetimeVsTc



FailureRate

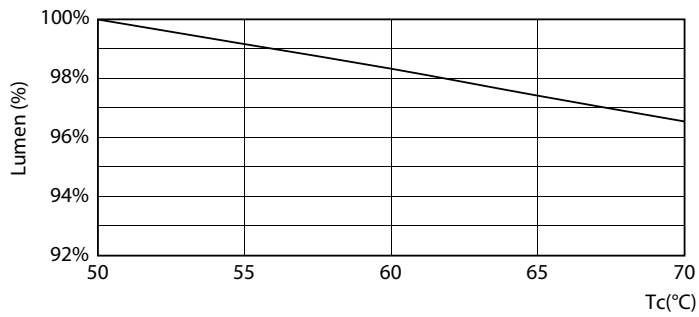
MASTER LEDtube InstantFit HF T5

Lifetime



Lumen Maintenance Diagram - MAS LEDtube HF 1500mm HE 20W 830 T5

Life Expectancy Diagram



Lumen Maintenance Diagram - MAS LEDtube HF 1500mm HE 20W 830 T5

