

Essentia Intelligent Mounting Base EBE200-N

Instruction Sheet
R10142GB1



Schneider Electric Fire & Security Oy

Sokerilinnantie 11 C
FI-02600 Espoo, Finland
Tel: +358 10 446 511
Website: www.se.com
Document number: R10142GB1
Published: 21.05.2019

© 2020 – Schneider Electric. All Rights Reserved. This information is only to be used as guidance. Subject to changes and errors.

Contents

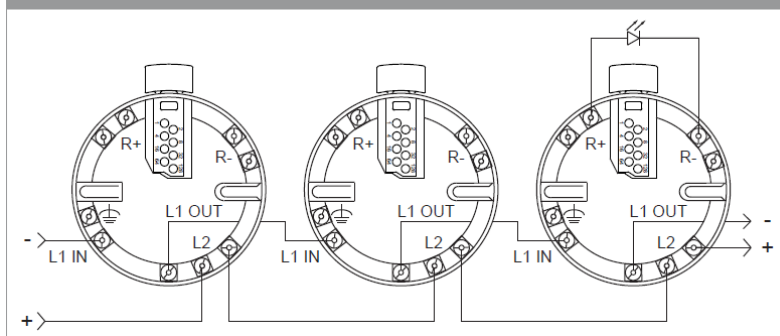
1	Essentia Intelligent Mounting Base EBE200-N.....	4
1.1	Wiring	4
1.2	Installing Essentia XPERT8 card	5
1.3	Essentia XPERT8 card addressing.....	6

1 Essentia Intelligent Mounting Base EBE200-N

The Essentia intelligent mounting base EBE200-N (FFS06720300) has wide interior diameter for ease of cables and terminals. Isolated and non-isolated devices are supported. Mounting base is keyed to accept only addressable devices. The detector can be locked to the base. It's backward compatible for Intellia detector ranges.

1.1 Wiring

Figure 1 Wiring Diagram for Detectors with Isolator*



*Note: Detectors without isolators will work with the above connections, however if there are no isolators in the system or it is a retrofit application, the arrangement below is recommended.

Figure 2 Wiring Diagram for Detectors without Isolator

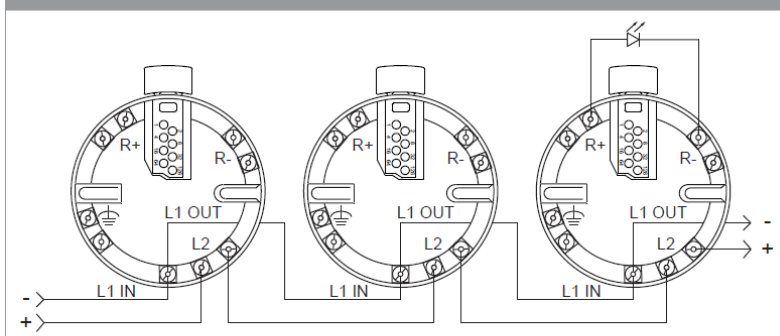
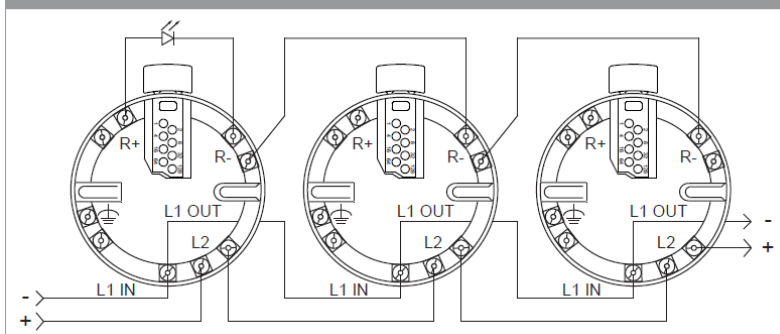
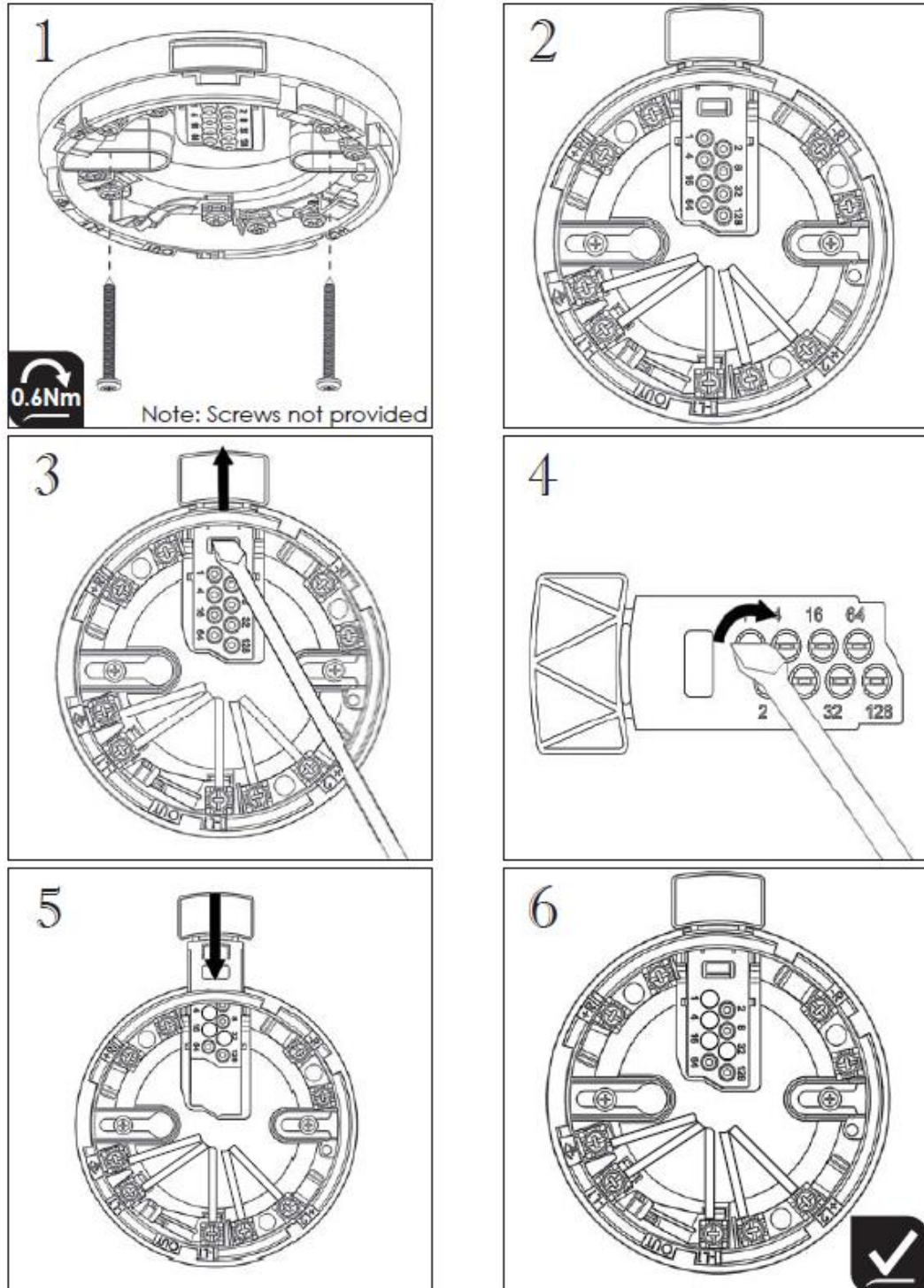


Figure 3 Wiring Diagram for Detectors without Isolator with common Remote LED



1.2 Installing Essentia XPERT8 card

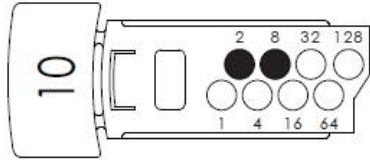
Essentia XPERT8 card (FFS06720331) is compatible with EBE200-N.



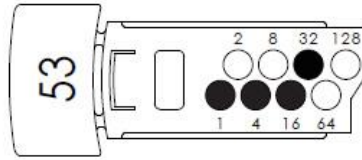
1.3 Essentia XPERT8 card addressing

XPERT 8 card Addressing

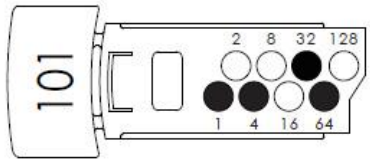
Select the desired address and remove the pips indicated in black



$$2 + 8 = 10$$



$$1 + 4 + 16 + 32 = 53$$



$$1 + 4 + 32 + 64 = 101$$

To reach maximum address range use EBE200-N Mounting base with Essentia XPERT8 address card.