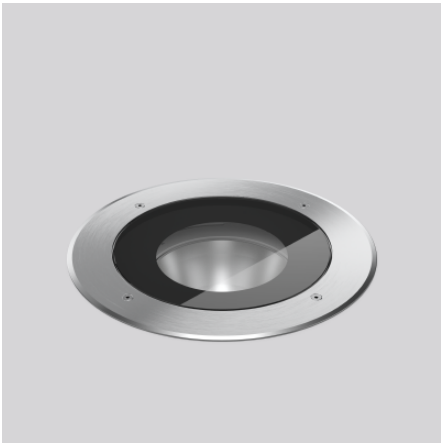


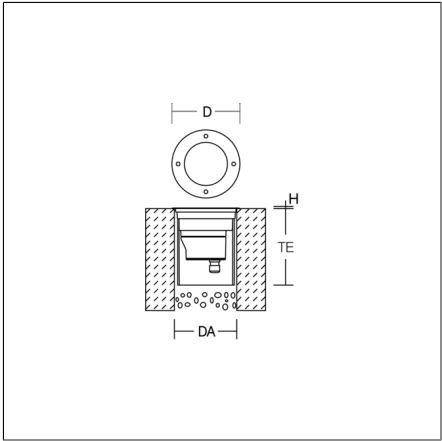
TERRA EDELSTAHL 245

641300.000 | In-ground luminaires



In-ground luminaires
4051859081951
D 245, H 2

In-ground installation
stainless steel



In-ground luminaire for pedestrian areas. Housing made of corrosion-resistant die-cast aluminium, powder-coated. Circular shape marine grade stainless steel cover and screws. Flush mounted toughened glass. High performance LED refractor optics. Beam angle can be adjusted up to 10 degrees from vertical. Integral flexible power cord H07-RN8F. Use of in-ground support is necessary, please order chosen version for your application separately.

Product specifications

Diameter D	245 mm
Height H	2 mm
Cut-out diameter DA	300 mm
Installation space height HE	320 mm
Weight	4.49 kg
Light source	LED
Colour temperature	3000 K
Rated luminous flux	2250 lm
System power	26 W
System efficiency	87 lm/W
Beam angle	10°
Rated life	50000 h (L80)
Colour rendering index (CRI)	80
Colour tolerance	3
Photobiological safety according to EN 62471	Risk group 1
Driver	Not necessary
Control	on/off
Voltage	220 - 240 V / 50 - 60 Hz
Luminaires on B10A fuse	30
Luminaires on B16A fuse	50
Inrush current / Inrush current duration	5 A / 50 µs
CIE Flux Code / CEN Flux Code	0 0 0 0 100
Type of protection	IP 68
Protection class	I
Filament test	960°C - 30 seconds
Impact resistance	IK10
Ambient temperature	-20 °C ... + 30 °C
Conformity mark	CE

Accessories



982014.010
Glass, non-slip R12



982012.000
Large in-ground support for underground cable.

TERRA EDELSTAHL 245

641300.000 | In-ground luminaires



982013.000
Bottom closure for large in-ground support.



982014.030
Spare glass