



MASTER LEDtube Mains T5



MAS LEDtube 600mm HE 7W 830 T5 EU

The new Philips Master LEDtube Mains T5 brings simplicity to your lighting project. You don't need to pay attention to the driver technology anymore. Thanks to a unique design, Philips MASTER LEDtube Mains T5 installs in luminaires operating on mains power connection. So simple to operate! . Perfectly safe, reliable & easy to install Philips MASTER LEDtube Mains T5 is the ideal alternative to standard fluorescent tubes to maximize value over lifetime with high energy saving and lower maintenance costs.

Product data

General Information		Photobiological safety according to EN 62471	
Cap-Base	G5		RG0
Nominal lifetime	50,000 hour(s)	Operating and Electrical	
Switching Cycle	200,000	Input Frequency	50 to 60 Hz
Lighting Technology	LED	Power Consumption	7 W
Flux measurement reference	Sphere	Lamp Current (Nom)	32 mA
Light Technical		Starting Time (Nom)	0.5 s
Color Code	830 [CCT of 3000K]	Warm-up time to 60% light	0.5 s
Beam Angle (Nom)	200 degree(s)	Power Factor (Fraction)	0.9
Luminous Flux	1,000 lm	Voltage (Nom)	220-240 V
Color Designation	White (WH)	Ballast Compatibility	Mains
Correlated Color Temperature (Nom)	3000 K	LED alternative to fluorescent lamp power	14 W
Luminous Efficacy (rated) (Nom)	142 lm/W	Inrush current at mains	4.5
Color Consistency	<6	Max. lamp no. on MCB B type 10A - Mains	160
Color rendering index (CRI)	80	Max. lamp no. on MCB B type 10A – EM ballast without Compensation Capacitor.	-
LLMF At End Of Nominal Lifetime (Nom)	70 %	Max. lamp no. on MCB B type 10A – EM ballast with Compensation Capacitor.	-

MASTER LEDtube Mains T5

Max. lamp no. on MCB B type 16A – Mains	254
Max. lamp no. on MCB B type 16A – EM ballast without Compensation Capacitor.	-
Max. lamp no. on MCB B type 16A – EM ballast with Compensation Capacitor.	-
Temperature	
T-Case Maximum (Nom)	50 °C
Controls and Dimming	
Dimmable	No
Mechanical and Housing	
Bulb Finish	Frosted
Bulb Material	Glass
Product Length	600 mm
Bulb Shape	T5
Net Weight (Piece)	0.070 kg
Approval and Application	
Energy Efficiency Class	D
Energy Saving Product	Yes
Approval Marks	RoHS compliance KEMA Keur certificate
Energy Consumption kWh/1000 h	7 kWh

EPREL Registration Number	1826568
CE mark	Yes
EU RoHS compliant	Yes
Flickering value (PstLM) - Flickering value as per EN 61000-3-3	1
Stroboscopic effect visibility measure (SVM)	0.4
Ambient temperature range	-20 to +45 °C

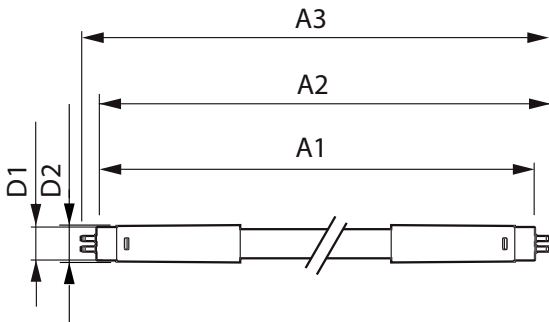
Application Conditions

can it be used in closed luminaires	Yes
-------------------------------------	-----

Product Data

Order product name	MAS LEDtube 600mm HE 7W 830 T5 EU
Full product name	MAS LEDtube 600mm HE 7W 830 T5 EU
Full product code	872016931169500
Order code	929003795402
Material Nr. (12NC)	929003795402
Numerator - Quantity Per Pack	1
EAN/UPC - Product/Case	8720169311695
Numerator - Packs per outer box	10
EAN/UPC - Case	8720169311701

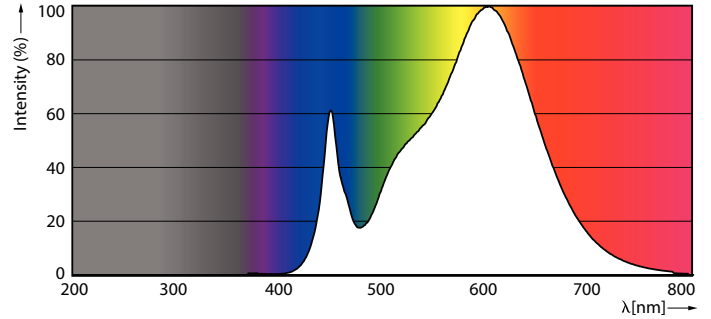
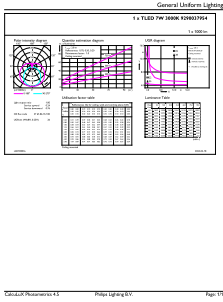
Dimensional drawing



Product	D1	D2	A1	A2	A3
MAS LEDtube 600mm HE 7W 830 T5 EU	15.7 mm	19 mm	549 mm	556.1 mm	563.2 mm

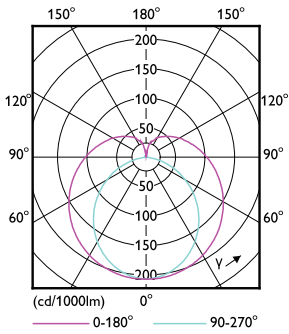
MASTER LEDtube Mains T5

Photometric data



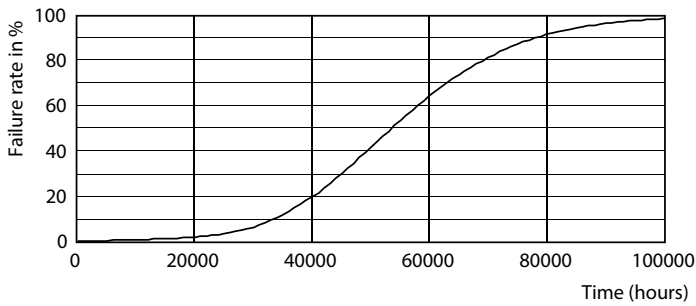
General uniform lighting - MAS LEDtube 600mm HE 7W 830 T5 EU

Spectral Power Distribution Colour - MAS LEDtube 600mm HE 7W 830 T5 EU

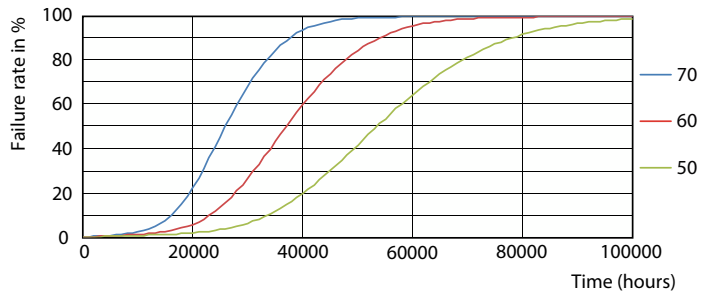


Light Distribution Diagram - MAS LEDtube 600mm HE 7W 830 T5 EU

Lifetime



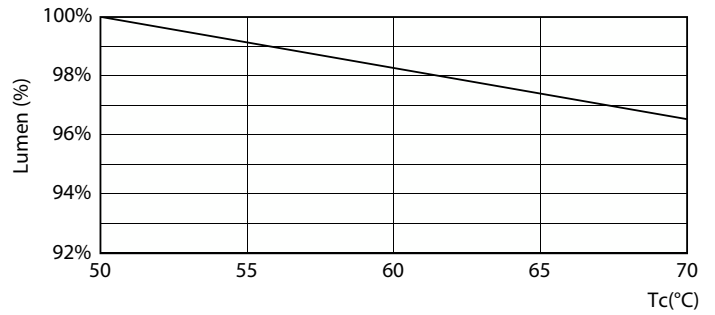
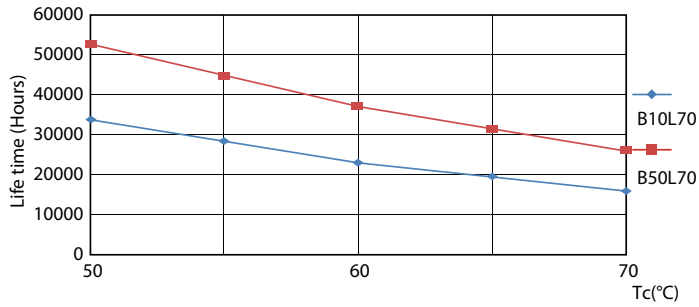
Life Expectancy Diagram



FailureRate

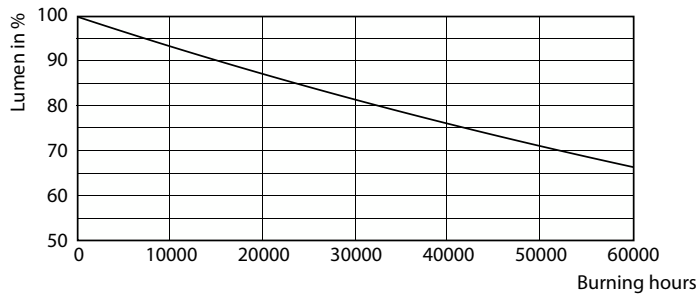
MASTER LEDtube Mains T5

Lifetime



LifetimeVsTc

Lumen Maintenance Diagram - MAS LEDtube 600mm HE 7W 830 T5 EU



Lumen Maintenance Diagram - MAS LEDtube 600mm HE 7W 830 T5 EU

