

# PRODUCT DATASHEET

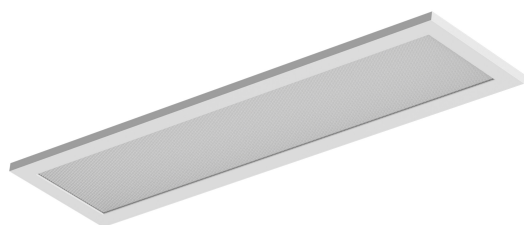
## PL INT 1200 V 35W 840 IP65 UGR19

PANEL INTEGRATED IP65 UGR19 | Waterproof recessed panel luminaires with low glare, for 600 x 600 mm and 1200x300 ceiling systems

---

### Areas of application

- Direct replacement for luminaires with fluorescent lamps
- Suitable for recessed ceiling systems with grid size of 600 x 600 mm and 1200x300 mm



---

### Product benefits

- Suitable for use in dusty and damp locations thanks to high IP rating
- High lumen output reduces the total number of panels per installation
- Good glare reduction (UGR < 19)
- Low flicker light thanks to special electronic control gear
- Energy savings thanks to system efficacy of 120 lm/W
- 5 years guarantee

---

### Product features

- Integrated driver
- Suspended installation possible
- Lifetime (L70/B50): up to 72,000 h (at 25 °C)
- Lifetime (L80/B10): up to 50,000 h (at 25 °C)

## TECHNICAL DATA

### Electrical data

Nominal wattage	35.00 W
Nominal voltage	220...240 V
Mains frequency	50 Hz
Nominal current	160.000 mA
Inrush current	0.16 A
Max. number of luminaires per miniature circuit breaker B16	18
Max. number of luminaires per miniature circuit breaker C10	15
Max. number of luminaires per miniature circuit breaker C16	24
Protection class	II

### Photometrical data

Luminous flux	3675 lm
Luminous efficacy	105 lm/W
Color temperature	4000 K
Color rendering index Ra	> 80
Beam angle	90 °

### Dimensions & Weight

Length	1195.00 mm
Width	295.00 mm
Height	20.00 mm
Product weight	3200.00 g



PL INT 1200 V 840 IP65

### Materials & Colors

Product color	White
Housing color	White
Body material	Aluminum

### Application & Mounting

Type of protection	IP65
--------------------	------

Dimmable	No
Application environment	Indoor






### Control gear

Output current	125 mA
----------------	--------

### Certificates & Standards

Replaceable light source (EPREL)	By the end consumer
----------------------------------	---------------------

### DOWNLOAD DATA

Documents and certificates		Document name
	User instruction / safety instructions	PL INT 600/1200 V 840 IP65
	Addon technical information	PL INT 600/1200 V 840 IP65
	Legal information	PANEL INTEGRATED V
	Legal information	Informationstext 18 Abs 4 ElektroG
	Declarations of conformity	PANEL INTEGRATED V

### LOGISTICAL DATA

Product code	Packaging unit (Pieces/Unit)	Dimensions (length x width x height)	Gross weight	Volume
4099854188350	Folding box 1	309 mm x 60 mm x 1,210 mm	3818.00 g	22.43 dm <sup>3</sup>
4099854279720	Shipping box 2	1,230 mm x 138 mm x 338 mm	8460.00 g	57.37 dm <sup>3</sup>

The mentioned product code describes the smallest quantity unit which can be ordered. One shipping unit can contain one or more single products. When placing an order, for the quantity please enter single or multiples of a shipping unit.

### DISCLAIMER

Subject to change without notice. Errors and omission excepted. Always make sure to use the most recent release.