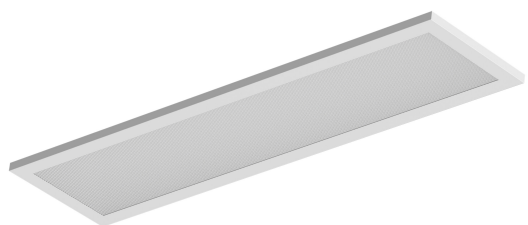


PRODUCT DATASHEET

PL INT 1200 V 35W 840 UGR19

PANEL INTEGRATED UGR19 | Recessed panel luminaires with low glare, for 600 x 600 mm and 1200x300 ceiling systems



Areas of application

- Direct replacement for luminaires with fluorescent lamps
- Offices, conference rooms
- Reception areas, foyers, corridors, elevators
- Suitable for recessed ceiling systems with grid size of 600 x 600 mm and 1200x300 mm

Product benefits

- Good glare reduction (UGR < 19)
- Low flicker light thanks to special electronic control gear
- Energy savings thanks to system efficacy of 120 lm/W
- Slim design <20mm
- 5 years guarantee

Product features

- Integrated driver
- Suspended installation possible
- Lifetime (L70/B50): up to 72,000 h (at 25 °C)
- Lifetime (L80/B10): up to 50,000 h (at 25 °C)

TECHNICAL DATA

Electrical data

Nominal wattage	35.00 W
Nominal voltage	220...240 V
Mains frequency	50 Hz
Nominal current	160.000 mA
Inrush current	0.16 A
Max. number of luminaires per miniature circuit breaker B16	18
Max. number of luminaires per miniature circuit breaker C10	15
Max. number of luminaires per miniature circuit breaker C16	24
Protection class	II

Photometrical data

Luminous flux	3675 lm
Luminous efficacy	105 lm/W
Color temperature	4000 K
Color rendering index Ra	> 80
Beam angle	90 °

Dimensions & Weight

Length	1195.00 mm
Width	295.00 mm
Height	20.00 mm
Product weight	2500.00 g



PL INT 1200 V 840

Materials & Colors

Product color	White
Housing color	White
Body material	Aluminum

Application & Mounting

Type of protection	IP20
--------------------	------

Dimmable	No
Application environment	Indoor






Control gear

Output current	125 mA
----------------	--------

Certificates & Standards

Replaceable light source (EPREL)	By the end consumer
----------------------------------	---------------------

DOWNLOAD DATA

Documents and certificates	Document name
 User instruction / safety instructions	PL INT 600/1200 V 840
 Addon technical information	PL INT 600/1200 V 840
 Legal information	PANEL INTEGRATED V
 Legal information	Informationstext 18 Abs 4 ElektroG
 Declarations of conformity	PANEL INTEGRATED V

LOGISTICAL DATA

Product code	Packaging unit (Pieces/Unit)	Dimensions (length x width x height)	Gross weight	Volume
4099854188190	Folding box 1	309 mm x 29 mm x 1,210 mm	2915.00 g	10.84 dm ³
4099854242397	Shipping box 3	1,229 mm x 109 mm x 341 mm	9654.00 g	45.68 dm ³

The mentioned product code describes the smallest quantity unit which can be ordered. One shipping unit can contain one or more single products. When placing an order, for the quantity please enter single or multiples of a shipping unit.

DISCLAIMER

Subject to change without notice. Errors and omission excepted. Always make sure to use the most recent release.