



# CorePro LED PLL



## CorePro LED PLL EM/Mains 16.5W 840 4P

Philips CorePro LED PLL is the ideal uplamping solution for downlights & luminaires in a wide range of general lighting applications. It integrates a LED light source into a traditional fluorescent form factor to offer superb energy savings over a lifetime that's twice as long as fluorescent alternatives.

### Product data

General Information		Lamp Current (Nom)	
Cap-Base	2G11		83 mA
Nominal lifetime	30,000 hour(s)	Starting Time (Nom)	0.5 s
Switching Cycle	200,000	Warm-up time to 60% light	0.5 s
Lighting Technology	LED	Power Factor (Fraction)	0.9
Flux measurement reference	Sphere	Voltage (Nom)	220-240 V
		Ballast Compatibility	EM
		LED alternative to fluorescent lamp power	36 W
		Inrush current at mains	9.4
		Max. lamp no. on MCB B type 10A - Mains	82
		Max. lamp no. on MCB B type 10A – EM ballast without Compensation Capacitor.	104
		Max. lamp no. on MCB B type 10A – EM ballast with Compensation Capacitor.	19
		Max. lamp no. on MCB B type 16A - Mains	131
		Max. lamp no. on MCB B type 16A – EM ballast without Compensation Capacitor.	166
		Max. lamp no. on MCB B type 16A – EM ballast with Compensation Capacitor.	30
Light Technical		Temperature	
Color Code	840 [CCT of 4000K]	T-Case Maximum (Nom)	70 °C
Beam Angle (Nom)	160 degree(s)		
Luminous Flux	2,100 lm		
Color Designation	Cool White (CW)		
Correlated Color Temperature (Nom)	4000 K		
Luminous Efficacy (rated) (Nom)	127 lm/W		
Color Consistency	<6		
Color rendering index (CRI)	80		
LLMF At End Of Nominal Lifetime (Nom)	70 %		
Photobiological safety according to EN 62471	RG0		
Operating and Electrical			
Line Frequency	50 to 60 Hz		
Input Frequency	50 to 60 Hz		
Power Consumption	16.5 W		

# CorePro LED PLL

## Controls and Dimming

Dimmable	No
----------	----

## Mechanical and Housing

Bulb Finish	Frosted
Bulb Material	Glass
Product Length	405 mm
Bulb Shape	PL-L
Net Weight (Piece)	0.150 kg

## Approval and Application

Energy Efficiency Class	E
Energy Saving Product	Yes
Approval Marks	RoHS compliance KEMA Keur certificate
Energy Consumption kWh/1000 h	17 kWh
EPREL Registration Number	1370828
CE mark	Yes
EU RoHS compliant	Yes

Flickering value (PstLM) - Flickering value as per EN 61000-3-3	1
---	---

Stroboscopic effect visibility measure (SVM)	0.4
--	-----

Ambient temperature range	-20 °C to 45 °C
---------------------------	-----------------

## Product Data

Order product name	CorePro LED PLL EM/Mains 16.5W 840 4P
--------------------	---------------------------------------

Full product name	CorePro LED PLL EM/Mains 16.5W 840 4P
-------------------	---------------------------------------

Full product code	872016915709500
-------------------	-----------------

Order code	929003592702
------------	--------------

Material Nr. (12NC)	929003592702
---------------------	--------------

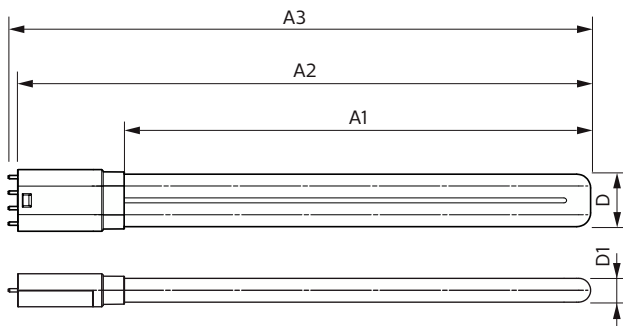
Numerator - Quantity Per Pack	1
-------------------------------	---

EAN/UPC - Product/Case	8720169157095
------------------------	---------------

Numerator - Packs per outer box	10
---------------------------------	----

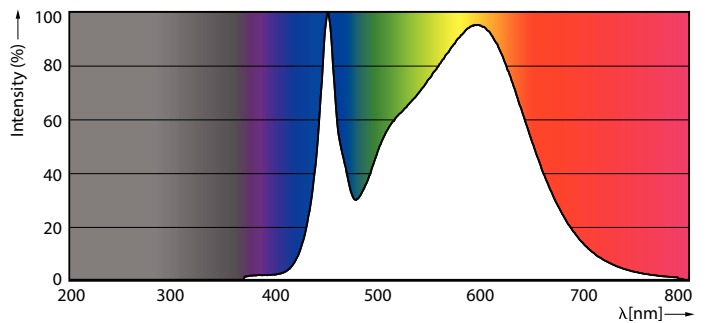
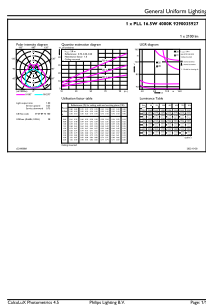
EAN/UPC - Case	8720169157101
----------------	---------------

## Dimensional drawing



Product	D1	D2	A1	A2	A3
CorePro LED PLL EM/Mains 16.5W 840 4P	17 mm	38 mm	330 mm	405 mm	412 mm

## Photometric data

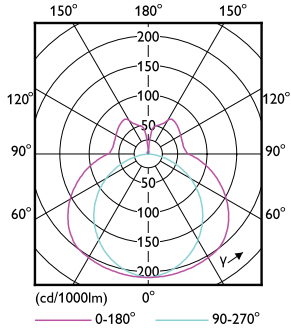


General uniform lighting - CorePro LED PLL EM/Mains 16.5W 840 4P

Spectral Power Distribution Colour - CorePro LED PLL EM/Mains 16.5W 840 4P

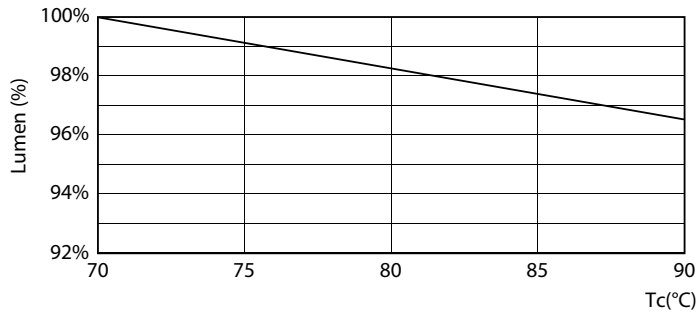
# CorePro LED PLL

## Photometric data

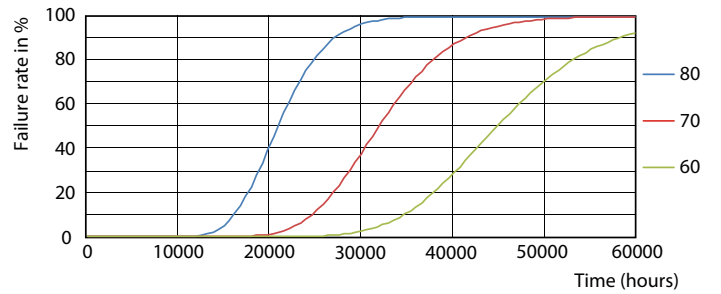


Light Distribution Diagram - CorePro LED PLL EM/Mains 16.5W 840 4P

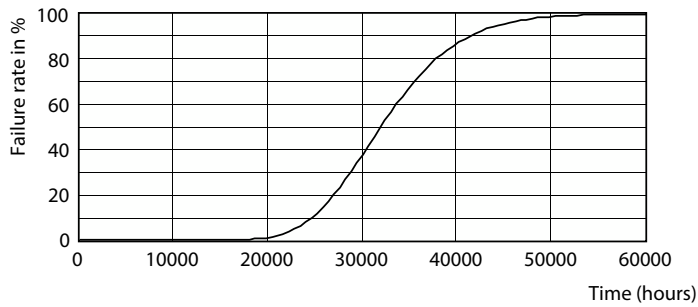
## Lifetime



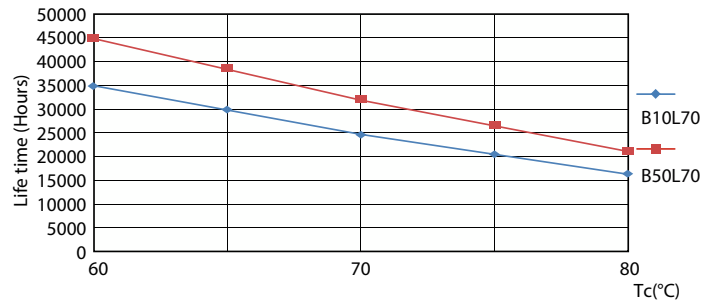
Lumen Maintenance Diagram - CorePro LED PLL EM/Mains 16.5W 840 4P



FailureRate



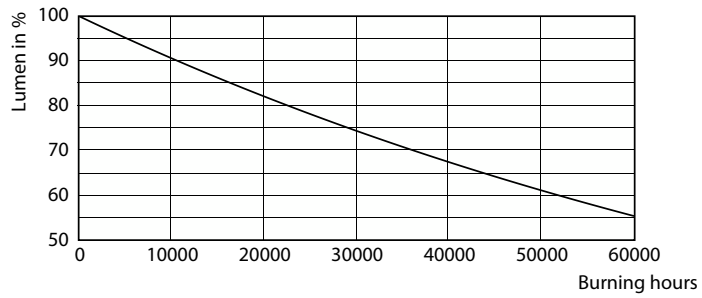
Life Expectancy Diagram



LifetimeVsTc

# CorePro LED PLL

## Lifetime



Lumen Maintenance Diagram - CorePro LED PLL EM/Mains 16.5W 840 4P

