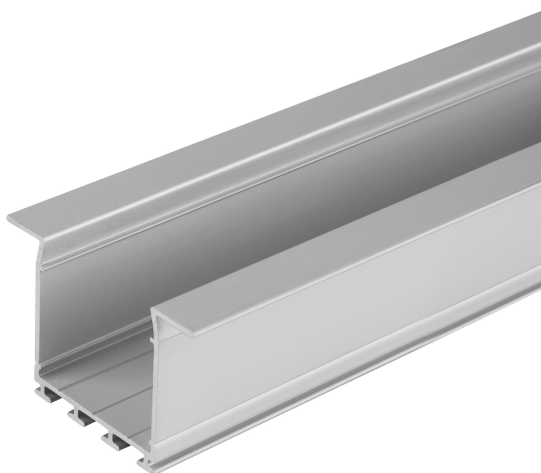


PRODUCT DATASHEET

LS AY -PW02/UW/39X26/14/1

Wide Profiles for LED Strips | Wide Profiles for LED Strips



Areas of application

- General indoor illumination

Product benefits

- Robust aluminum profile
- Quick and simple installation

TECHNICAL DATA

Dimensions & Weight

Length	1000 mm
Width	39.0 mm
Height	26.0 mm
Product weight	260.00 g

Colors & materials

Product color	Grey
---------------	------

Temperatures & operating conditions

Ambient temperature range	-15...+45 °C
Temperature range in operation	-15...+45 °C






Additional product data

Product remark	Can be combined with all LEDVANCE LED Strips including connectors and endcap
----------------	--


LOGISTICAL DATA


Temperature range at storage	-35...+85 °C
------------------------------	--------------

Accessories Optional

Product image	Product name	EAN
	LS AY -PW02/EC/H	4058075277427
	LS AY -PW02/EC	4058075277397
	LS AY -PC/W02/C/1	4058075402348
	LS AY -PW02/MB	4058075276659
	LS AY -PC/W02/D/1	4058075279421

DOWNLOAD DATA

Documents and certificates		Document name
	Declarations of conformity	LS AY PM_PF_PW_PC

Tender texts		Document name
	Tender documents	Wide Profiles for LED Strips PW02UW/39X26141-EN

LOGISTICAL DATA

Product code	Packaging unit (Pieces/Unit)	Dimensions (length x width x height)	Gross weight	Volume
4058075278134	BAG 1	1,200 mm x 80 mm x 10 mm	261.00 g	0.96 dm ³
4058075278141	Bundle 10	500 mm x 55 mm x 100 mm	2611.00 g	2.75 dm ³
4058075278158	Shipping box 50	1,030 mm x 230 mm x 310 mm	13593.00 g	73.44 dm ³

The mentioned product code describes the smallest quantity unit which can be ordered. One shipping unit can contain one or more single products. When placing an order, for the quantity please enter single or multiples of a shipping unit.

DISCLAIMER

Subject to change without notice. Errors and omission excepted. Always make sure to use the most recent release.