


6180 3880	DATA SHEET	
Valid from: 24.04.2018	SILVYN® UI COMPACT M	

SILVYN® UI COMPACT M is a conduit gland made of nickel plated brass or stainless steel. The connector is suitable for SILVYN® UI 511 and can be used in steel industry and in demanding mechanical environments.



Material:

Body	Stainless steel AISI 304/ Brass, nickel plated
Nut	Stainless steel AISI 304/ Brass, nickel plated
Clamping ring	Brass, nickel plated
Sleeve	Brass, nickel plated
O-Ring	NBR

Technical Features:

Connecting thread	M16x1,5 up to M63x1,5 acc. to EN 60423
Nominal wide	NW 5/15 up to NW 2"
Protection class	IP40 acc. to EN 60529
Temperature range	Depending on the used conduit With O-Ring: -45°C up to +105°C Without O-Ring: -55°C up to +260°C

Additional features:

Resistant to corrosion
High mechanical resistant

Color:

Metallic shiny

Reference standards:

CE
IEC 61386-1


Suitable conduits:

SILVYN® UI 511

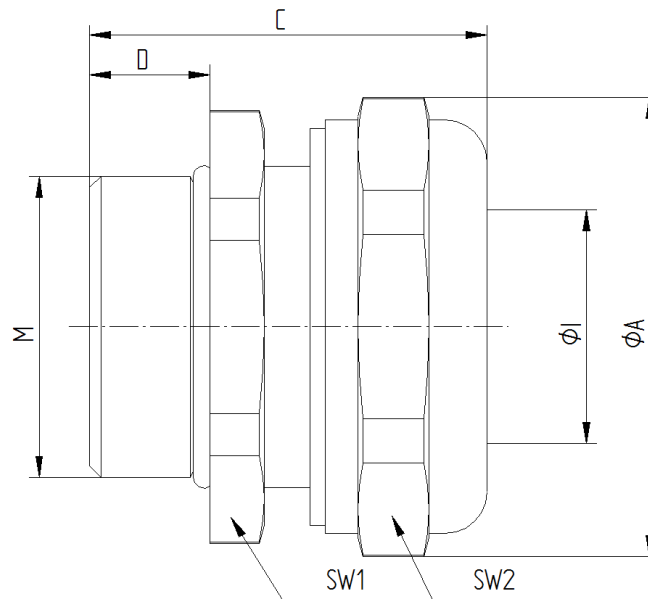


For more information please see our current catalogue. Please do not hesitate to contact our laboratory if there are any questions regarding resistance against aggressive agents and special oil.

Creator:MAAU1/PDP Released: DAMU1/PDP	Document: DB61803880EN Version: 01	Page 1 of 2
--	---------------------------------------	-------------

6180 3880	DATA SHEET	
Valid from: 24.04.2018	SILVYN® UI COMPACT M	

Product drawing:



Dimension table:

Part No.	NW	Thread M	Thread length D mm	Length C mm	Diameter mm		SW1	SW2	Weight g
					ØI	ØA			
SILVYN® UI COMPACT M (Stainless steel)									
6180 3880	3/8"	M16x1,5	10	31	9,8	28,3	24	26	39
6180 3881	3/8"	M20x1,5	10	31	9,8	28,3	24	26	40
6180 3882	1/2"	M20x1,5	10	32	13,9	31,6	27	29	44
6180 3883	3/4"	M25x1,5	10	33	18,5	38,2	33	35	66
6180 3884	1"	M32x1,5	12	36	22,8	49,5	42	45	117
6180 3885	1 1/4"	M40x1,5	13	40	30,8	58,3	50	53	160
6180 3886	1 1/2"	M50x1,5	14	46	36,8	68,2	58	62	253
6180 3887	2"	M63x1,5	16	52	47,8	83,6	72	76	386
SILVYN® UI COMPACT M (Brass, nickel plated)									
6180 3870	5/16"	M16x1,5	10	30	9,8	28,3	24	26	44
6180 3871	3/8"	M16x1,5	10	30	9,8	28,3	24	26	44
6180 3872	5/16"	M20x1,5	10	30	9,8	28,3	24	26	45
6180 3873	3/8"	M20x1,5	10	30	9,8	28,3	24	26	45
6180 3874	1/2"	M20x1,5	10	32	13,9	31,6	27	29	53
6180 3875	3/4"	M25x1,5	10	33	18,5	38,2	33	35	78
6180 3876	1"	M32x1,5	12	36	22,8	49,5	44	45	144
6180 3877	1 1/4"	M40x1,5	13	40	30,8	58,3	50	53	191
6180 3878	1 1/2"	M50x1,5	14	46	36,9	68,2	58	62	280
6180 3879	2"	M63x1,5	16	52	47,9	83,6	72	76	434