

5550 6135	DATA SHEET	
Valid from: 20.05.2019	SILVYN® FPAX-M	

SILVYN® FPAX-M is a conduit gland with fast fit and an inner seal for a safety assembling. For the demounting we are recommending to use a screwdriver. The gland is suitable for SILVYN® FPAS and can be used in the machine- and plant constructions.



Material:

Body Polyamide 66
Sealing Polyester

Technical Features:

Connecting thread M16x1,5 up to M63x1,5 acc. to EN 60423
Nominal wide NW 13 up to NW 54
Protection class IP66, IP 67, IP68 (2bar) and IP69 acc. to EN 60529
In combination with SILVYN® FPAS
Temperature range -50°C up to +135°C

Additional features:

Fire classification V2 acc. to UL94
Free of halogen, sulphur and phosphorus
UV-Resistant SILVYN® FPAX-M black

Colour:

Black
Grey

Approbation:



Reference standards:

EN 61386-1

Suitable conduits:

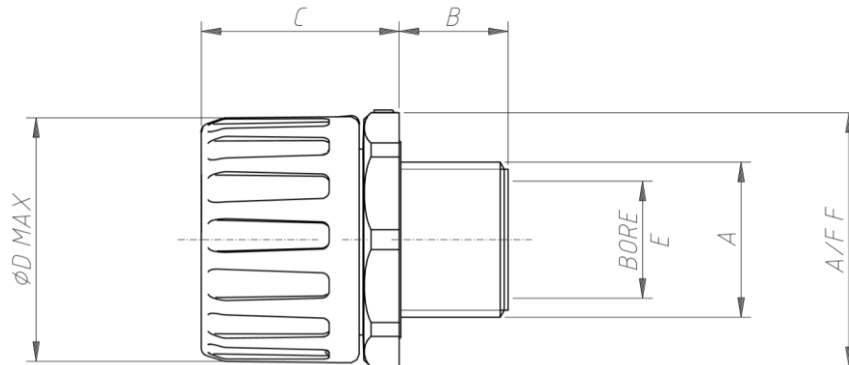
SILVYN® FPAS

For more information please see our current catalogue. Please do not hesitate to contact our laboratory if there are any questions regarding resistance against aggressive agents and special oil.

Creator: MAU1/PDP Released: DAMU1/PDP	Document: DB55506135EN Version: 04	Page 1 of 2
--	---------------------------------------	-------------

5550 6135	DATA SHEET	
Valid from: 20.05.2019	SILVYN® FPAX-M	

Product drawing:



Dimension table:

Part No.	NW	Thread A	Thread length B mm	Length C mm	Diameter mm		Wrench size A/F F mm	Weight g
					E	ØD max		
SILVYN® FPAX-M black								
5550 6135	13	M16x1,5	11,0	26,0	11,0	24,0	22	8,1
5550 6145	16	M16x1,5	11,0	30,0	11,0	29,0	28	11,7
5550 6155	16	M20x1,5	14,0	30,0	14,5	29,0	28	12,7
5550 6165	21	M20x1,5	14,0	30,0	14,5	32,0	30	13,6
5550 6175	28	M25x1,5	15,0	35,0	19,5	44,0	42	27,7
5550 6185	34	M32x1,5	16,0	37,0	26,5	51,0	49	35,5
5550 6195	42	M40x1,5	16,0	45,0	32,5	63,0	60	63,2
5550 6205	42	M50x1,5	16,0	45,0	40,5	63,0	60	69,5
5550 6215	54	M50x1,5	16,0	49,0	42,0	76,0	73	94,9
5550 6225	54	M63x1,5	16,0	49,0	53,0	76,0	73	99,2
SILVYN® FPAX-M Grey								
5550 6235	13	M16x1,5	11,0	26,0	11,0	24,0	22	8,1
5550 6245	16	M16x1,5	11,0	30,0	11,0	29,0	28	11,7
5550 6255	16	M20x1,5	14,0	30,0	14,5	29,0	28	12,7
5550 6265	21	M20x1,5	14,0	30,0	14,5	32,0	30	13,6
5550 6275	28	M25x1,5	15,0	35,0	19,5	44,0	42	27,7
5550 6285	34	M32x1,5	16,0	37,0	26,5	51,0	49	35,5
5550 6295	42	M40x1,5	16,0	45,0	32,5	63,0	60	63,2
5550 7265	42	M50x1,5	16,0	45,0	40,5	63,0	60	69,5
5550 7275	54	M50x1,5	16,0	49,0	42,0	76,0	73	94,9
5550 7285	54	M63x1,5	16,0	49,0	53,0	76,0	73	99,2