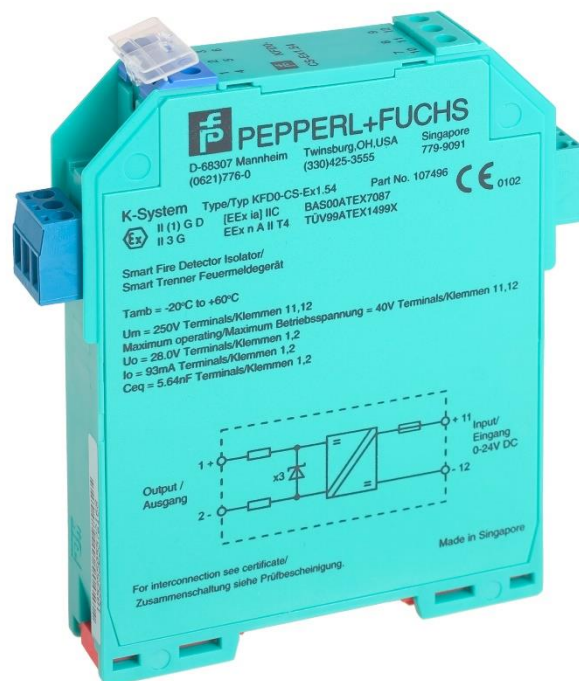


Intellia Galvanic Isolator

29600-098APO

Instruction Sheet
R10050GB0



Schneider Electric Fire & Security Oy

Sokerilinnantie 11 C
FI-02600 Espoo, Finland
Tel: +358 10 446 511
Website: www.schneider-electric.com
Document number: R10050GB0
Published: 17.04.2019

© 2018 – Schneider Electric. All Rights Reserved. This information is only to be used as guidance. Subject to changes and errors.

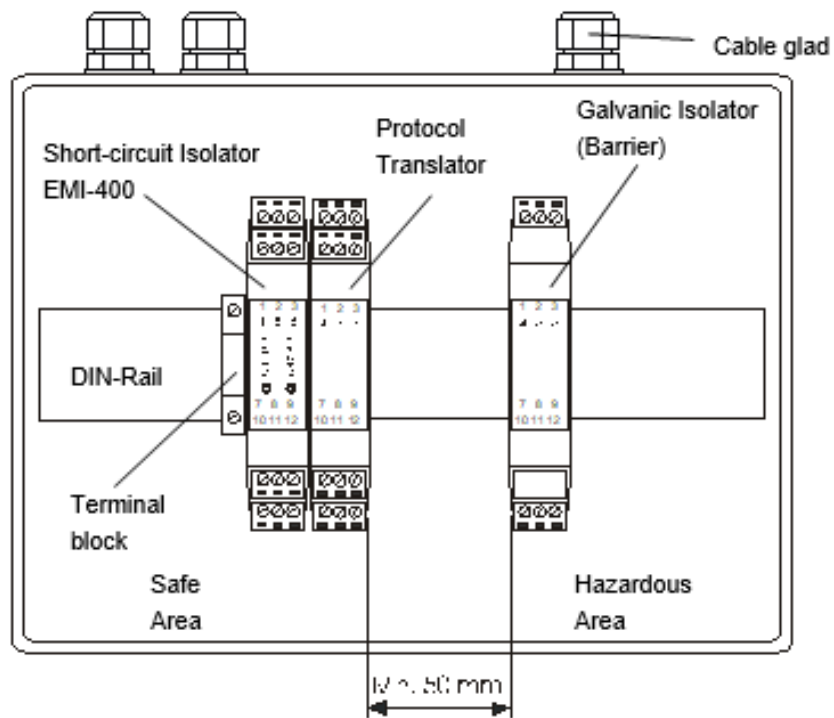
Contents

1	Intellia Galvanic Isolator 29600-098APO	4
1.1	Addressable IS configuration (a large enclosure).....	4
1.2	Schematic Diagram & Wiring Connections.....	5
1.3	Product Codes.....	5

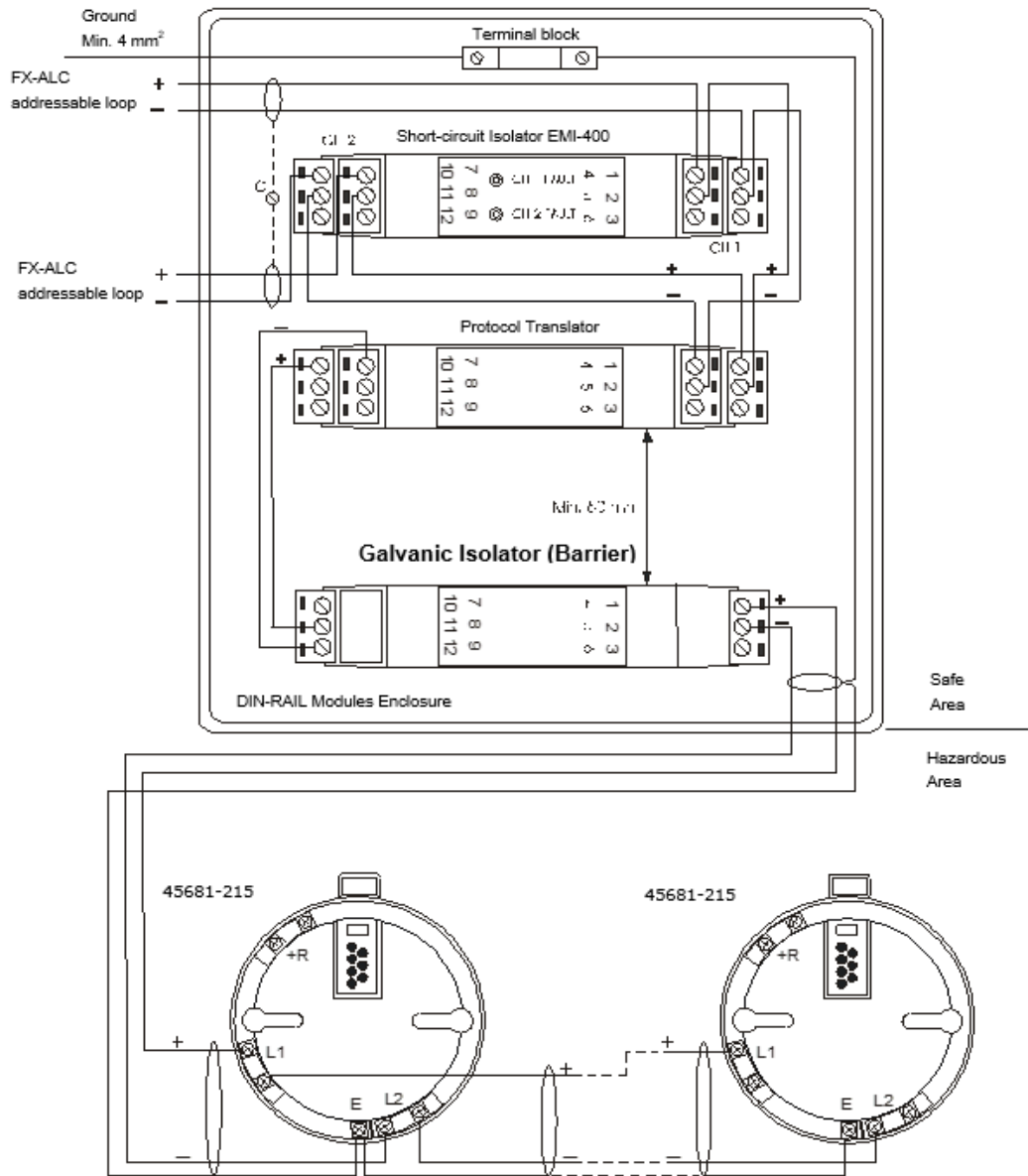
1 Intellia Galvanic Isolator 29600-098APO

Intellia Galvanic Isolator 29600-098APO is installed in the safe area and ensures system integrity.

1.1 Addressable IS configuration (a large enclosure)



1.2 Schematic Diagram & Wiring Connections



1.3 Product Codes

Intellia Galvanic Isolator	
29600-098APO	FFS0672 5203