

# PRODUCT DATASHEET

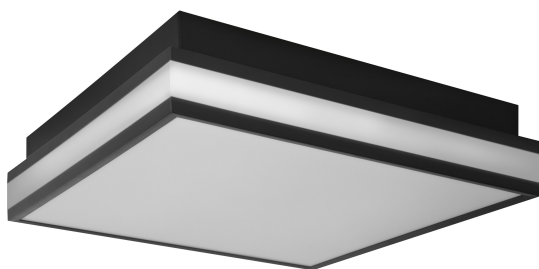
## SMART+ Wifi Orbis Magnet Black 300x300mm TW

Magnet | Smart decorative ceiling with wifi technology TW and dimmable

---

### Areas of application

- Indoor applications
- Kitchens, living rooms, children's rooms or home offices



---

### Product benefits

- Easy and quick installation
- Magnetic closure
- No screw visible

---

### Product features

- Controllable via LEDVANCE SMART+ App (with minimum Android 8.0 or iOS 14.0)
- Controllable via voice control available: Google Assistant or Amazon Alexa
- Adjustable color temperature via Tunable White: 3,000...6,500 K
- Dimmable
- Network protocol: WiFi



## TECHNICAL DATA

### Electrical data

Nominal wattage	26.00 W
Nominal voltage	220...240 V
Mains frequency	50...60 Hz
Nominal current	115.000 mA
Inrush current	1.08 A
Power factor $\lambda$	> 0.90
Total harmonic distortion	< 20 %
Protection class	I
Operating mode	External LED driver

### Photometrical data

Luminous flux	1400 lm
Total luminous flux of contained light sources	2800 lm
Luminous efficacy	96 lm/W
Color temperature	3000...6500 K
Reference control setting of contained light source (Kelvin)	3000 K <sup>1)</sup>
Light color (designation)	Tunable White
Color rendering index Ra	≥80
Standard deviation of color matching	< 6 sdcm
Photobiological safety group acc. to EN62778	RG0
Photobiological safety group acc. to EN62471	RG0
Beam angle	110 °

1) Performing a reset will restore the default values set by the manufacturer

### Dimensions & Weight

Length	300.00 mm
Width	300.00 mm
Height	86.00 mm
Product weight	1130.00 g

SMART WIFI ORBISMAGNET  
300X300TW

## Materials & Colors

Product color	Black
Housing color	Black
Body material	Steel
Cover material	Polycarbonate (PC)
Mercury content	0.0 mg

## Application & Mounting

Ambient temperature range	-20...+40 °C
Temperature range at storage	-20...+80 °C
Type of connection	Screw terminal
Type of protection	IP20
Protection class IK (shock resistance)	IK03
Dimmable	Yes
Type of dimming	WiFi
Mounting type	Surface
Mounting location	Ceiling
Application environment	Indoor
With light source	Yes

## Lifespan

Lifespan L70/B50 at 25 °C	30000 h
Number of switching cycles	15000

## Emergency lighting

Type of emergency operation test	None
Integrated test switch	No

## Certificates & Standards

Standards	CE / UKCA
Luminaire with limited surface temperature, "D sign"	No
Replaceable light source (EPREL)	Not replaceable

## EQUIPMENT / ACCESSORIES




- Mounting bracket included

- Mounting screws and dowels included
- Control via app or voice control requires compatible Smart home system
- For control via LEDVANCE SMART+ App, a smartphone or tablet is required (with minimum Android 8.0 or iOS 14.0)

### Safety advice

- All electrical connections must be made by a qualified person.
- Caution, risk of electric shock.
- Product in protection class I. All electrically conductive, metallic housing parts that can absorb voltage during operation or during maintenance in the event of a fault must be continuously connected to the protective earthing conductor.
- Check wall-ceiling for suitability. If uncertain, seek professional advice.

### DOWNLOAD DATA

Documents and certificates		Document name
	User instruction / safety instructions	SMART WIFI ORBIS MAGNET
	Legal information	Legal insert Residential luminaires
	Declarations of conformity	EC declaration_Ceiling LUM

### LOGISTICAL DATA

Product code	Packaging unit (Pieces/Unit)	Dimensions (length x width x height)	Gross weight	Volume
4058075572737	Folding box 1	352 mm x 112 mm x 352 mm	1380.00 g	13.88 dm <sup>3</sup>
4058075572744	Shipping box 4	462 mm x 368 mm x 370 mm	6663.00 g	62.91 dm <sup>3</sup>

The mentioned product code describes the smallest quantity unit which can be ordered. One shipping unit can contain one or more single products. When placing an order, for the quantity please enter single or multiples of a shipping unit.

### References / Links

- Further information and frequently asked questions (FAQs) at [www.ledvance.com/consumer/smart/faq](http://www.ledvance.com/consumer/smart/faq)

### DISCLAIMER

Subject to change without notice. Errors and omission excepted. Always make sure to use the most recent release.