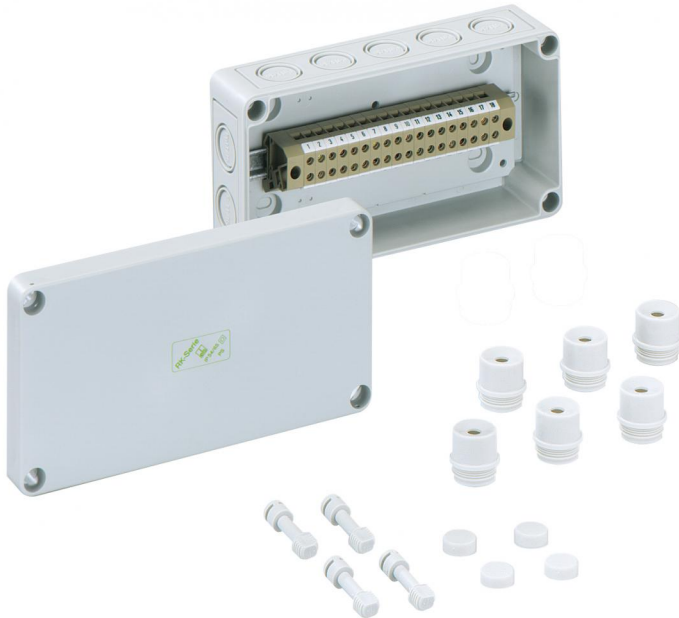


Terminal block enclosure

## RKK 4/22-22x4<sup>2</sup>



### RKK 4/22-22x4<sup>2</sup>

Terminal block enclosure

CUSTOMIZABLE

Productnumber: 61440401

Dimensions: 180 x 94 x 57 mm

Terminal block enclosure, with protection class IP54/IP66, Nominal cross-section 4 mm<sup>2</sup>, U<sub>i</sub>=400V AC, Polystyrene, Internal fastening points, for standard indoor installations

equipped with 22-pole terminal block 4mm<sup>2</sup>  
(Contaclip BKA 4 type)

Accessories supplied:  
8 attachment bushes IP54 M20 seal range 8 - 13,5 mm



To industrial product:  
<https://www.spelsberg.com/p/63440401>

## Technical Data

### electrical characteristics

Rated insulation voltage AC:	400 V
Max. conductor cross section:	4 mm <sup>2</sup>
Protection class:	II
Type of protection:	IP54/IP66
UL Type Rating:	not specified

### Dimensions

Width:	180 mm
Length:	94 mm
Height:	57 mm

### Material characteristics

suitable for exterior use:	no
Industry quality:	no
Halogen free:	yes
Flammability class according with UL94:	HB
Glow-wire flammability according to EN 60695-2-11:	650 °C

### mechanical properties

Type of fastening:	Wall/ceiling mounting
Impact strength:	IK07
Sealable:	yes

### Ambient conditions

max. relative humidity 25°C:	95 %
max. relative humidity 40°C:	50 %
Min. ambient temperature:	-25 °C
Max. ambient temperature:	40 °C
24h ambient temperature:	35 °C

## Material

Base unit material:	Polystyrene
Cover material:	Polystyrene
Sealing material:	Polyurethane
Cover screw material:	Polyamide, glass-fibre reinforced

## Accessories

[19000101 - HBA - Mounting material](#)

[19000201 - ASS-kl - External hinge set](#)

[19202001 - KS M20 - Combi set](#)

[19400101 - TK ABL - External fixing lugs kit](#)

## Cable gland

