

TECHNISCHE DATEN:

Aufbau

Dichteinsatz TPE TPS

Eigenschaften

- Dichteinsatz zur Durchführung mehrerer Einzelkabel

Temperaturbereich -30 °C / +100 °C

Hinweis montiert in den PERFECT Serien:
50.0xx/zXz, 50.0xx, PAzzzz/zXz
außerdem verwendbar in den PERFECT Serien:
50.0xx, 50.0xx PAzzzz, 50.1xx PAzzzz

TECHNICAL DATA:

Configuration

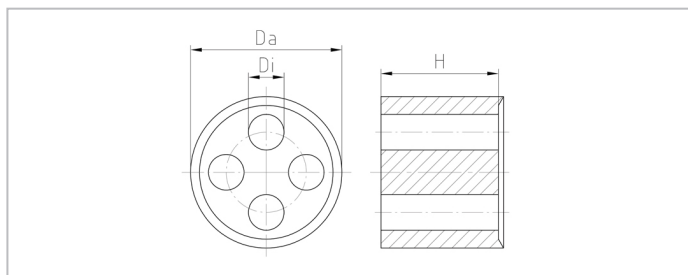
Sealing insert TPE TPS

Properties

- sealing insert for the installation of several single cables


Temperature range -30 °C / +100 °C

Comment assembled in PERFECT series:
50.0xx/zXz, 50.0xx, PAzzzz/zXz
installation also possible in PERFECT series:
50.0xx, 50.0xx PAzzzz, 50.1xx PAzzzz



Merkmale

Characteristics

Größe / Size xx	n x Di mm	H mm	Da mm		Art.-Nr. / Part No.
Pg 16	4x5	9	17,4	50	WJ-D 16/4X5
Pg 16	4x6	9	17,4	50	WJ-D 16/4X6
Pg 16	5x4	9	17,4	50	WJ-D 16/5X4
Pg 16	1x6/1x6,5	9	17,4	50	WJ-D 16/6/6,5
Pg 16	1x7,5/1x5,5	9	17,4	50	WJ-D 16/7,5/5,5
Pg 21	2x7	11	22,2	50	WJ-D 21/2X7
Pg 21	2x8	11	22,2	50	WJ-D 21/2X8
Pg 21	2x9	11	22,2	50	WJ-D 21/2X9
Pg 21	3x7	11	22,2	50	WJ-D 21/3X7
Pg 21	3x8	11	22,2	50	WJ-D 21/3X8
Pg 21	4x5	11	22,2	50	WJ-D 21/4X5
Pg 21	4x6,5	11	22,2	50	WJ-D 21/4X6,5
Pg 21	4x7	11	22,2	50	WJ-D 21/4X7
Pg 21	4x7,5	11	22,2	50	WJ-D 21/4X7,5
Pg 21	5x5	11	22,2	50	WJ-D 21/5X5
Pg 29	5x8,5	13	29,8	25	WJ-D 29/5X8,5
Pg 29	6x5	13	29,8	25	WJ-D 29/6X5
Pg 29	6x7,5	13	29,8	25	WJ-D 29/6X7,5
Pg 29	8x5	13	29,8	25	WJ-D 29/8X5