



# CorePro LED PLT 4P



## CorePro LED PLT HF 6.5W 830 4P GX24q-2

The CorePro LED PLT 4P integrates a LED light source into a traditional fluorescent form factor. This product is the ideal solution for uplampping in general lighting applications: it meets basic lighting requirements, offers significant energy savings, and is environmentally friendly

### Product data

General Information	
Cap-Base	GX24q-2
Nominal lifetime	30,000 hour(s)
Switching Cycle	200,000
Lighting Technology	LED
Flux measurement reference	Sphere
Light Technical	
Color Code	830 [CCT of 3000K]
Beam Angle (Nom)	120 degree(s)
Luminous Flux	720 lm
Color Designation	White (WH)
Correlated Color Temperature (Nom)	3000 K
Luminous Efficacy (rated) (Nom)	110 lm/W
Color Consistency	<6
Color rendering index (CRI)	82
LLMF At End Of Nominal Lifetime (Nom)	70 %
Photobiological safety according to EN 62471	RG1
Operating and Electrical	
Line Frequency	20K-80K Hz
Input Frequency	20K-80K Hz
Power Consumption	6.5 W

Lamp Current (Max)	300 mA
Lamp Current (Min)	150 mA
Starting Time (Nom)	0.5 s
Warm-up time to 60% light	0.5 s
Power Factor (Fraction)	0.9
Voltage (Nom)	20-60 V
Ballast Compatibility	HF
LED alternative to fluorescent lamp power	18 W
Inrush current at mains	-
Max. lamp no. on MCB B type 10A - Mains	-
Max. lamp no. on MCB B type 10A – EM ballast without Compensation Capacitor.	-
Max. lamp no. on MCB B type 10A – EM ballast with Compensation Capacitor.	-
Max. lamp no. on MCB B type 16A - Mains	-
Max. lamp no. on MCB B type 16A – EM ballast without Compensation Capacitor.	-
Max. lamp no. on MCB B type 16A – EM ballast with Compensation Capacitor.	-

Temperature	
T-Case Maximum (Nom)	65 °C

# CorePro LED PLT 4P

## Controls and Dimming

Dimmable	No
----------	----

## Mechanical and Housing

Bulb Finish	Frosted
Bulb Material	Plastic
Product Length	103 mm
Bulb Shape	PL-T
Net Weight (Piece)	0.115 kg

## Approval and Application

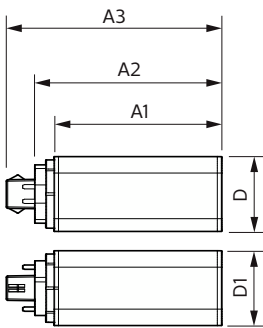
Energy Efficiency Class	F
Energy Saving Product	Yes
Approval Marks	RoHS compliance KEMA Keur certificate
Energy Consumption kWh/1000 h	7 kWh
EPREL Registration Number	1361420
CE mark	Yes

EU RoHS compliant	Yes
Ambient temperature range	-20 °C to 35 °C

## Product Data

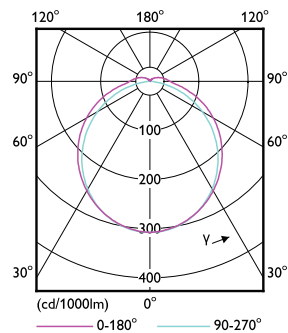
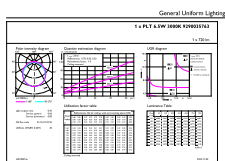
Order product name	CorePro LED PLT HF 6.5W 830 4P GX24q-2
Full product name	CorePro LED PLT HF 6.5W 830 4P GX24q-2
Full product code	871951448776500
Order code	929003576302
Material Nr. (12NC)	929003576302
Numerator - Quantity Per Pack	1
EAN/UPC - Product/Case	8719514487765
Numerator - Packs per outer box	20
EAN/UPC - Case	8719514487772

## Dimensional drawing



Product	D1	D2	A1	A2	A3
CorePro LED PLT HF 6.5W 830 4P GX24q-2	42 mm	42 mm	93 mm	103 mm	119 mm

## Photometric data

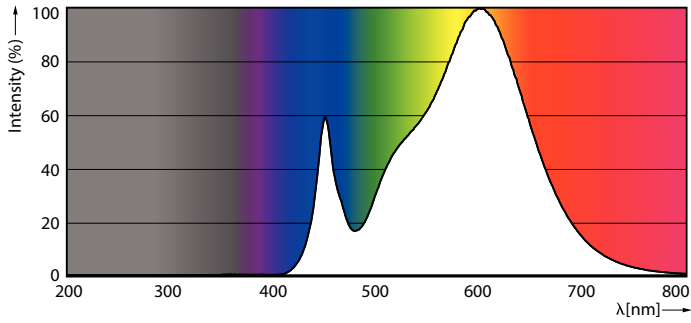


General uniform lighting - CorePro LED PLT HF 6.5W 830 4P GX24q-2

Light Distribution Diagram - CorePro LED PLT HF 6.5W 830 4P GX24q-2

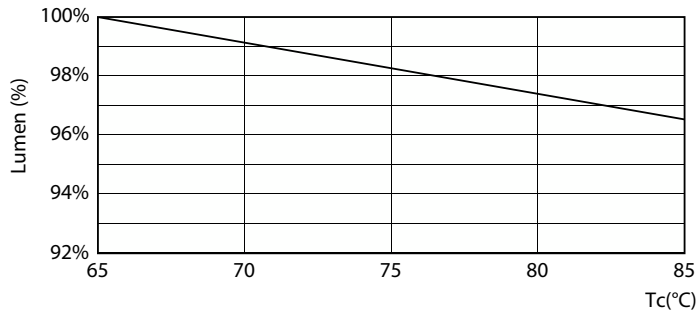
# CorePro LED PLT 4P

## Photometric data

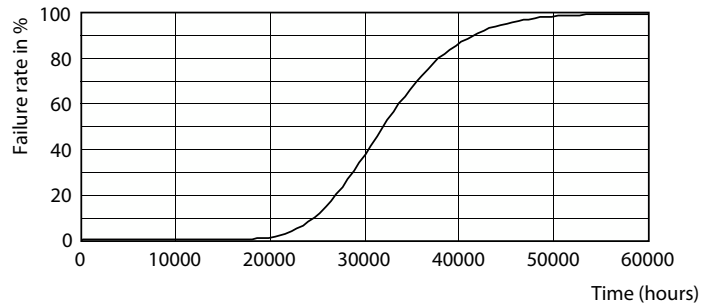


Spectral Power Distribution Colour - CorePro LED PLT HF 6.5W 830 4P GX24q-2

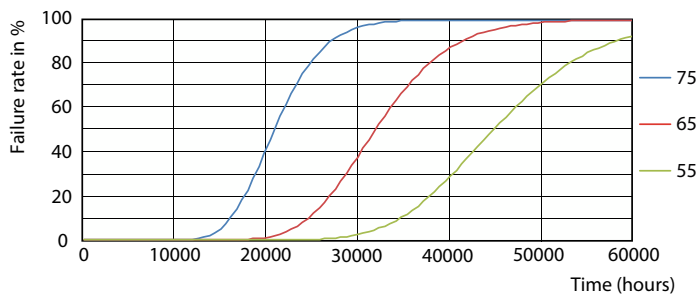
## Lifetime



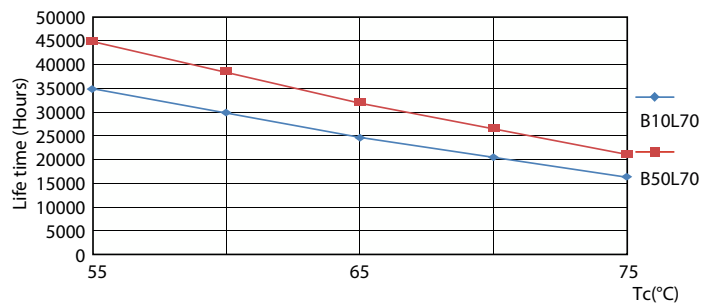
Lumen Maintenance Diagram - CorePro LED PLT HF 6.5W 830 4P GX24q-2



Life Expectancy Diagram



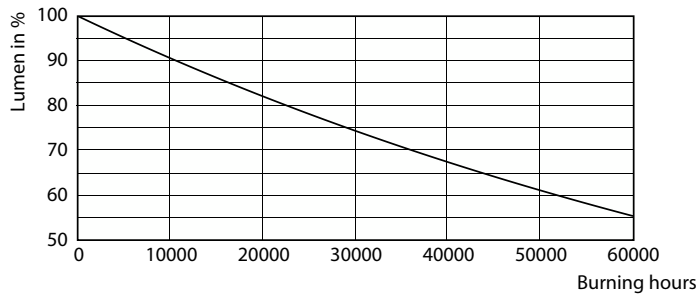
FailureRate



LifetimeVsTc

# CorePro LED PLT 4P

## Lifetime



Lumen Maintenance Diagram - CorePro LED PLT HF 6.5W 830 4P GX24q-2

