

NH protection switch

## GSS 4025-250

This product is outdated. To the successor product: <https://www.spelsberg.com/p/04602501>

### GSS 4025-250

NH protection switch

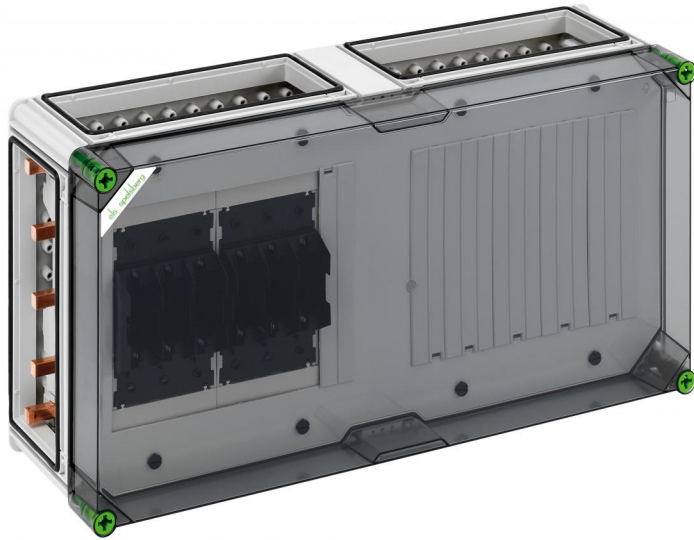
CUSTOMIZABLE

Productnumber: 04202501

Dimensions: 640 x 320 x 179 mm

NH fuse base enclosure - Industrial Quality -, 2 x NH 00 bus-mounting fuse base, Clamp connection 1.5 - 70 mm<sup>2</sup>, Output on top, on 5-pole busbar, with 5 busbar terminals 16 - 70 mm<sup>2</sup>, N terminal 4 - 35 mm<sup>2</sup>, PE terminal 4 - 35 mm<sup>2</sup>, 4 x housing connectors (GGV)

with transparent cover, on busbar system 250 A



## Technical Data

### electrical characteristics

|                              |            |
|------------------------------|------------|
| Rated operating voltage AC:  | 690 V      |
| Rated insulation voltage AC: | 690 V      |
| Rated insulation voltage DC: | 1000 V     |
| Protection class:            | II         |
| Type of protection:          | IP65       |
| Rated current:               | 250 Ampere |
| UL Type Rating:              | 3R         |

### Dimensions

|         |        |
|---------|--------|
| Width:  | 640 mm |
| Length: | 320 mm |
| Height: | 179 mm |

### Material characteristics

|  |        |
|--|--------|
| suitable for exterior use:                         | yes    |
| Industry quality:                                  | yes    |
| Halogen free:                                      | yes    |
| Glow-wire flammability according to EN 60695-2-11: | 960 °C |

### mechanical properties

|                     |        |
|---------------------|--------|
| Impact strength:    | IK08   |
| Cover screw torque: | 2.5 Nm |
| Stackable:          | yes    |

### Ambient conditions

|                           |        |
|---------------------------|--------|
| Min. ambient temperature: | -25 °C |
| Max. ambient temperature: | 40 °C  |
| 24h ambient temperature:  | 35 °C  |

## Material

|                       |                                       |
|-----------------------|---------------------------------------|
| Base unit material:   | Plastic                               |
| Cover material:       | Polycarbonate, glass-fibre reinforced |
| Sealing material:     | Polyurethane                          |
| Cover screw material: | Polyamide, glass-fibre reinforced     |

## Accessories

[07251401 - GFS 14-m - Flange set](#)

[07505601 - GSV 56 - Busbar connector](#)

[07673001 - KPK NH00 - Prism terminal](#)