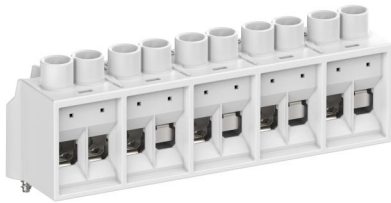


Terminal block

Abox 060 KLS-6²



Abox 060 KLS-6²

Terminal block

Productnumber: 89640601

Dimensions: 23 x 98 x 32 mm

Connecting terminal in accordance with DIN EN 60998 (VDE 0613), $U_i=690V$. For assembly in junction boxes Abox/Abox Pro from 2024 onwards.

Screw terminal block for Abox/Abox Pro 060, 5-pole - 6 mm², $I_n = 41 A$, clampable cross-sections per pole: 4 x 1.5 mm², 4 x 2.5 mm², 4 x 4 mm², 4 x 6 mm² Cu rigid/flexible with wire-end ferrule

690V
AC

690V
DC

Technical Data

electrical characteristics

Rated insulation voltage AC:	690 V
Rated insulation voltage DC:	690 V
Min. conductor cross section:	1,5 mm ²
Rated current:	41 A
Terminal type:	Screw terminal
Number of poles:	5
shockproof:	Yes
Connection 1: Strip length:	12 mm
Connection 1: Clamping points per pole:	2
Connection 1: Suitable for Cu conductors:	1
Connection 1: Connectable conductor cross-section, single-wire (min):	1.5 mm ²
Connection 1: Connectable conductor cross-section, single-wire (max):	10 mm ²

Colours

Base unit colour:	grey
Cover colour:	grey

Dimensions

Width:	23 mm
Length:	98 mm
Height:	32 mm
Weight:	0.076 kg

Material characteristics

Glow-wire flammability according to EN 60695-2-11:	960 °C
--	--------

mechanical properties

Connection 1: Tightening moment:	1.2 Nm
----------------------------------	--------

Sales Information

EAN:	4013902677276
Packing Unit Code:	C62
ETIM Class:	EC001284
Custom tariff number:	85369010

Material

Insulating body material:	Thermoplastic
---------------------------	---------------