



# MASTER LEDtube InstantFit HF T5



## MAS LEDtube HF 900mm HO 18.5W 865 T5

The Philips MASTER LEDtube integrates a LED light source into a traditional fluorescent form factor. Its unique design creates a perfectly uniform visual appearance, which cannot be distinguished from traditional fluorescent. These T5 lighting tubes are the right choice for absolute performance and are designed to stand up to everyday conditions. Unparalleled savings thanks to low energy consumption and an exceptionally long lifetime make these T5 LED tubes the choice for every demanding application.

### Product data

General Information		Photobiological safety according to EN 62471	
Cap-Base	G5		RG0
Nominal lifetime	60,000 hour(s)	<b>Operating and Electrical</b>	
Switching Cycle	50,000	Line Frequency	30K to 100K Hz
Lighting Technology	LED	Input Frequency	30K to 100K Hz
Flux measurement reference	Sphere	Power Consumption	18.5 W
<b>Light Technical</b>		Lamp Current (Max)	350 mA
Color Code	865 [CCT of 6500K]	Lamp Current (Min)	120 mA
Beam Angle (Nom)	200 degree(s)	Starting Time (Nom)	0.5 s
Luminous Flux	2,800 lm	Warm-up time to 60% light	0.5 s
Color Designation	Cool Daylight	Power Factor (Fraction)	0.9
Correlated Color Temperature (Nom)	6500 K	Voltage (Nom)	60-100 V
Luminous Efficacy (rated) (Nom)	151 lm/W	Ballast Compatibility	HF
Color Consistency	<6	LED alternative to fluorescent lamp power	39 W
Color rendering index (CRI)	80	Inrush current at mains	-
LLMF At End Of Nominal Lifetime (Nom)	70 %	Max. lamp no. on MCB B type 10A - Mains	-
		Max. lamp no. on MCB B type 10A – EM ballast without Compensation Capacitor.	-

# MASTER LEDtube InstantFit HF T5

Max. lamp no. on MCB B type 10A – EM ballast with Compensation Capacitor.	-
Max. lamp no. on MCB B type 16A – Mains	-
Max. lamp no. on MCB B type 16A – EM ballast without Compensation Capacitor.	-
Max. lamp no. on MCB B type 16A – EM ballast with Compensation Capacitor.	-

## Temperature

T-Case Maximum (Nom)	60 °C
----------------------	-------

## Controls and Dimming

Dimmable	Yes - Check ballast compatibility
----------	-----------------------------------

## Mechanical and Housing

Bulb Finish	Frosted
Bulb Material	Glass
Product Length	900 mm
Bulb Shape	T5
Net Weight (Piece)	0.115 kg

## Approval and Application

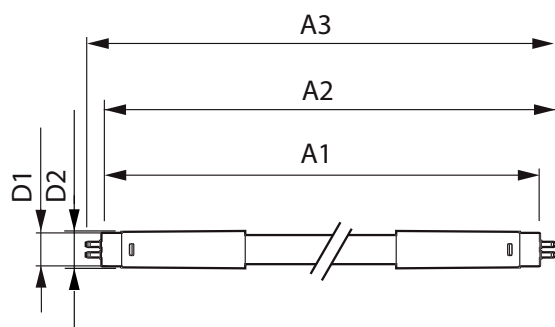
Energy Efficiency Class	D
-------------------------	---

Energy Saving Product	Yes
Approval Marks	RoHS compliance KEMA Keur certificate
Energy Consumption kWh/1000 h	19 kWh
EPREL Registration Number	1407662
CE mark	Yes
EU RoHS compliant	Yes
Ambient temperature range	-20 °C to 45 °C

## Product Data

Order product name	MAS LEDtube HF 900mm HO 18.5W 865 T5
Full product name	MAS LEDtube HF 900mm HO 18.5W 865 T5
Full product code	872016916317100
Order code	929003596702
Material Nr. (12NC)	929003596702
Numerator - Quantity Per Pack	1
EAN/UPC - Product/Case	8720169163171
Numerator - Packs per outer box	10
EAN/UPC - Case	8720169163188

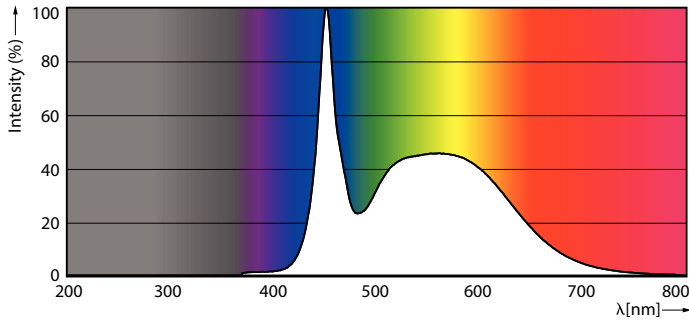
## Dimensional drawing



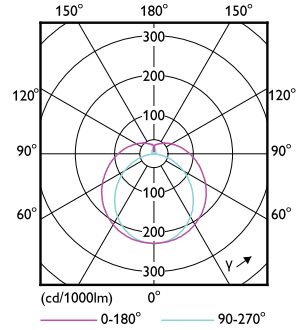
Product	D1	D2	A1	A2	A3
MAS LEDtube HF 900mm HO 18.5W 865 T5	15.5 mm	16/19 mm	849 mm	856 mm	863 mm

# MASTER LEDtube InstantFit HF T5

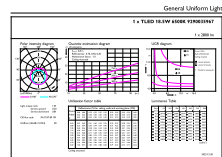
## Photometric data



Spectral Power Distribution Colour - MAS LEDtube HF 900mm HO 18.5W 865 T5



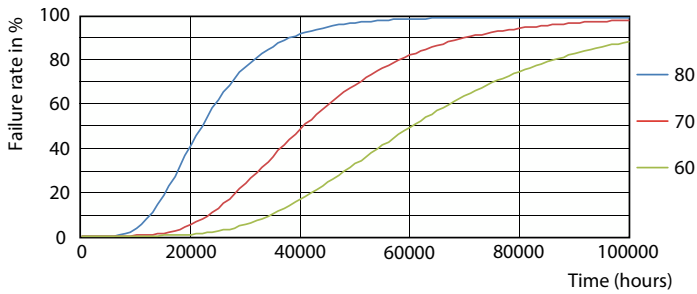
Light Distribution Diagram - MAS LEDtube HF 900mm HO 18.5W 865 T5



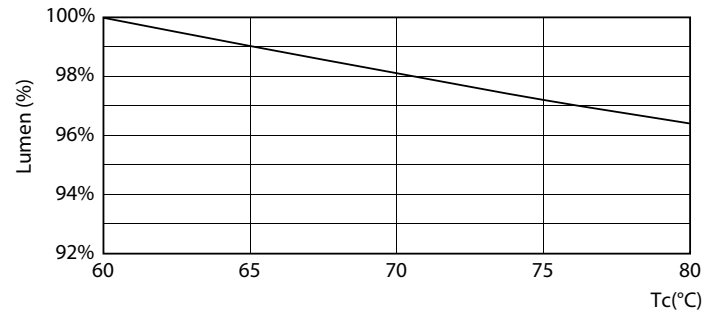
General Uniform Lighting

General uniform lighting - MAS LEDtube HF 900mm HO 18.5W 865 T5

## Lifetime



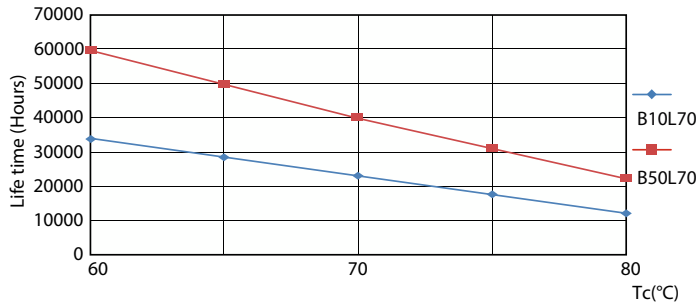
FailureRate



Lumen Maintenance Diagram - MAS LEDtube HF 900mm HO 18.5W 865 T5

# MASTER LEDtube InstantFit HF T5

## Lifetime



LifetimeVsTc

Lumen Maintenance Diagram - MAS LEDtube HF 900mm HO 18.5W 865 T5



Life Expectancy Diagram

